



OPERATING INSTRUCTION MANUAL

NAV ONE 4500/4000

Nothing Comes Close to a Cobra® | English

Controls and Indicators : About the NAV ONE System



Power

- Press to turn the unit on. Press and hold to turn it off.
- Press to cycle through four pre-set brightness levels when unit is on.
- **SmartPower** default is on. See **NOTE** below.

Volume Up

- Press to increase sound volume one pre-set increment.
- Press to zoom in one pre-set level when the **Map** is displayed and the **Zoom Hardkey During Map View** function is turned on in **User Preferences**.

Say Again

- Press for a voice prompt with next turn information when in navigation, or with current street name and next intersection when not in navigation.
- Press and hold **Mutes** and **Un-Mutes** the system.
- In **Map** mode, press to provide a voice prompt and temporarily switch the **Up** and **Down** buttons from zoom to volume during the voice prompt.

Volume Down

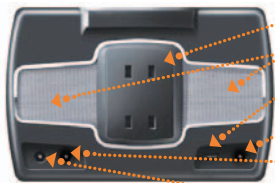
- Press to decrease sound volume one pre-set increment.
- Press to zoom out one pre-set level when the **Map** is displayed and the **Zoom Hardkey During Map View** function is turned on in **User Preferences**.

Menu

- Press to go directly to the **Menu**. (While entering data or changing preferences, a confirmation message will appear with the choice to save changes or not before proceeding to the **Menu**.)

Illuminated Touch Screen

- Touch the on-screen buttons and icons to activate unit functions.
- **Menu** is shown here.



Bracket Mounting Slots

Speaker

USB Port for Data and Software Updates

12V Power Port

External GPS Antenna Port

Port for Traffic Data Receiver (optional on GPSM 4000)

ABOUT THE NAV ONE SYSTEM

THANK YOU FOR PURCHASING THE NAV ONE 4500/4000 SYSTEM.

The following items should be in the package:

1. The NAV ONE system unit.
2. A mounting bracket with suction cup.
3. A 12 volt fused power cord
4. A foam cushion strip.
5. This Operating Instruction manual.
6. An RDS/TMC traffic data receiver (4500 only).
7. A warranty registration card. (Or register online at www.cobra.com)

TRY IT OUT

Using the NAV ONE is the most effective way to learn about it. Don't hesitate to explore menus and add entries to see how they work.

There are provisions for entries to be deleted and, if things get really tangled up, the factory defaults can be reset using the sequence:

- Menu → Settings → User Preferences
- Reset Factory Defaults

NOTE

With **SmartPower** on, a NAV ONE unit plugged into a power port that does not turn off with the ignition, will not drain the vehicle's battery if parked for a long time, such as at an airport parking lot.

The system is shut down when there is a combination of no vehicle motion and no button press for 15 minutes.

When **SmartPower** is off, the system continues to operate until it is turned off with the **Power** button (or ignition).

CONTENTS

Controls and Indicators	2
About the NAV ONE System	3
Important Safety Information	4
FCC Compliance	5
Installation	6
System Overview	8
Menu	9
Lists	10
Menu Choices	11
Interacting with the Map	16
Traffic Data	17
Settings	18
Maintenance	20
Troubleshooting	21
Product Service	22
Customer Assistance	23
Trademark Acknowledgement	23
User License	24
Warranty	25
Ordering Accessories	26

IMPORTANT SAFETY INFORMATION

Before installing and using the Cobra NAV ONE system, please read these general warnings and precautions. Without reading this important safety information, the user may be placed in a dangerous situation or may damage the unit before having any practical use from it. Also read pages 6 to 19 in this manual to learn the basics of installing and operating the system. It is strongly recommended to read this entire manual to be familiar with the system's features, and to know how to operate it.

WARNING SYMBOLS AND STATEMENTS

Please pay special attention to the WARNING symbols and statements in this manual.



WARNING

Statements identify conditions that could result in personal injury or loss of life.



WARNINGS

- **DO NOT** mount the unit over airbag panels or within airbag expansion spaces. The force of an expanding airbag can thrust objects in its path toward the driver or passengers with injurious result.
- **DO NOT** think this NAV ONE is a substitute for personal judgment. The route suggestions should never supersede any local traffic regulation, personal judgment or knowledge of safe driving practices. Before making any maneuvers suggested by the NAV ONE system (for example, a U-turn or a left turn), verify that the maneuver can be legally and safely completed. Do not follow route suggestions if they suggest an unsafe or illegal maneuver, would place the vehicle in an unsafe situation or would route the vehicle into an area that could be unsafe.
- **DO NOT** program this NAV ONE while driving. Only a passenger should operate controls or program the unit while the vehicle is in motion. The driver should not program the system unless the vehicle is parked in a safe location.
- **ONLY** glance at the screen when necessary and safe to do so. Listen to the computer voice guidance. If prolonged viewing is necessary, pull off the road to a safe location.



WARNINGS

- **DO NOT** depend on this NAV ONE system to locate emergency services (such as police, fire stations, hospitals and clinics). The database may not include all emergency service providers. Use judgment and ask for directions in these situations.
- **DO NOT** position the unit in a location that obstructs the driver's view of the road, instruments or controls to operate the vehicle.
- **DO NOT** drive the vehicle unless the unit is securely attached to the windshield with the supplied bracket and suction cup or is fastened by other reliable means to keep it from becoming a projectile hazard inside the vehicle in the event of a violent maneuver or collision.
- **DO NOT** disassemble or modify the system; personal injury or damage could result. If a problem occurs, stop using the system immediately and contact Cobra. Changes or modifications to the system may void its compliance with FCC rules and make it illegal to use.
- **DO** position the unit so the screen can be viewed with just a quick glance.
- **DO** set the volume at a level that will allow the hearing of outside traffic and emergency services.

CAUTION SYMBOLS AND STATEMENTS

Please pay special attention to the CAUTION symbols and statements in this manual.



CAUTION
Statements identify conditions that could cause damage to the system or other equipment.



CAUTIONS

- The user is responsible for operating this product wisely. This NAV ONE unit is intended for use only as a navigational aid and should not be relied upon to the exclusion of other information. Be aware of conditions around the vehicle and compare them to the information provided by the NAV ONE system.
- The Global Positioning System is provided and operated by the U.S. government, which is solely responsible for its accuracy and maintenance. That system is subject to changes, which could affect the accuracy and performance of this NAV ONE unit.
- This unit is not waterproof. Do not allow liquids to splash on it nor expose it to rain during operation or transfer from vehicle to vehicle.
- This unit can be operated in temperatures between 32°F and 140°F (0°C and 60°C).
- The NAV ONE's map database provides information on suggested routes without regard to some factors that may affect the user's driving experience. For example, the system does not reflect all road detours, closures or construction, some road characteristics (such as road surface, slope or grade, weight or height restrictions, etc.), weather conditions and similar factors. The NAV ONE 4500 (and 4000 when equipped with the optional traffic receiver) overlays traffic information on the **Map**. However, this data may be more or less complete, depending on the provider. Use personal judgment or the navigation system's detour function to develop an alternate route if necessary.



CAUTIONS

- Do not remove the unit from the windshield or bracket while the unit is turned on. The NAV ONE unit contains a hard drive which spins at high speed while the unit is turned on. Handling the unit while the drive is spinning could damage it. When the unit is off, the hard drive is parked in a more secure condition.
- Dismount the unit when parked. This will not only minimize the chance of theft but will also reduce the unit's exposure to extreme temperatures and strong sunlight which can shorten the life of the internal components.

FCC COMPLIANCE

This device complies with Part 15 of the FCC interference limits for Class B digital devices for home or office use. These limits are designed to provide more reasonable protection against harmful interference in a residential installation and are more stringent than "outdoor" requirements.

Operation of this device is subject to the following conditions:

1. This device may not cause harmful interference, and
2. This device must accept any interference received, including interference that may cause undesired operation.



Put the unit where it is visible at a glance.

INSTALLATION

The NAV ONE requires very little installation beyond putting it at a convenient location and securing it in place. The only connection required is to the vehicle's 12-volt power port.

When locating and securing the NAV ONE in the vehicle, keep in mind the warnings and cautions on pages 4 and 5 to allow using the NAV ONE safely while driving the vehicle:

- Put the unit where it can be seen at a glance and the voice instructions can be heard.
- Do not put the unit where it will obstruct the driver's view of the road or interfere with the use of vehicle instruments and controls.
- Do not put the unit over airbag panels or within airbag expansion spaces.

An important consideration in positioning the NAV ONE is its ability to “see” the sky. Radio signals from the GPS constellation of satellites are weak and cannot penetrate the solid portions of a vehicle's structure. The top of the NAV ONE contains the GPS antenna and needs maximum exposure to the sky through the windshield. This will allow the unit to receive signals from as many satellites as possible in various vehicle headings.

NOTE

Some vehicles have windshields with metallic coatings or integral heating systems that can block GPS satellite signals even though the unit “sees” the sky. In those vehicles, an accessory external antenna will need to be mounted outside the vehicle and connected to the unit. See accessories and order form on pages 26 and 27 for ordering information.



WARNING

If the unit is not securely attached to the vehicle, it can become a projectile hazard to the vehicle's occupants during a violent maneuver or a collision. The unit can cause serious injury under such conditions.



Let the NAV ONE “see” the sky.



To secure and connect the NAV ONE:

1. Select a suitable location where the unit can be mounted.
2. Separate the mounting bracket from the unit.
3. Press the suction cup against the windshield.
4. Rotate the lock lever down toward the base.
5. Test suction cup adhesion by pulling on the bracket.
6. Attach the unit to the bracket. Put the slots on the back of the unit over the prongs and slide the unit down.
7. Adjust the unit position using the knobs and tighten securely.
8. If the unit will rest on the dash or might contact it, apply the foam strip to the bottom of the unit to protect the dash.
9. Plug the power cord into the unit and the vehicle's 12-volt power port.

NOTE

It is best to temporarily remove the NAV ONE unit when the vehicle is parked to prevent theft or component damage due to temperature extremes. The bracket can be left attached to the windshield for quick reinstallation of the unit.

CHECKING GPS SIGNAL

Once the NAV ONE is installed and the vehicle is in an open area, turn the unit on and observe the GPS signal indicator while the **Map** (or any other mode that shows GPS signal strength) is displayed. If the indicator is either yellow or red, the NAV ONE may not be “seeing” the sky and may need to be repositioned.

NOTE

To check GPS reception in detail, select **More** **GPS**.

START-UP TIME

When the NAV ONE is new (or has been idle for more than seven days or has moved more than 500 miles while off), it can take up to five minutes for the system to lock onto the GPS satellites. After such a start-up, the system can be left turned on for 20 minutes or more to download GPS satellite data. This data will allow much faster satellite acquisition and lock — typically less than a minute — when the system is subsequently turned on.



SYSTEM OVERVIEW

When the NAV ONE is turned on, an opening message and safety warning are shown (below).



LANGUAGE CHOICES

At this display, the user has the opportunity to change the language from English to Spanish to French.

NAVIGATION WAS IN PROGRESS

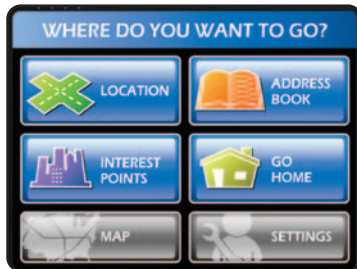


Continuation from the warning message depends on whether or not a navigation was in progress when the unit was last turned off.

NOTE

The **Menu** or the **Map** will be displayed depending on which has been set as the **Start Screen** in the **User Preferences**.

NAVIGATION WAS NOT IN PROGRESS



or



MENU

The starting point for all system features.



The four upper buttons are the entry points to a trip. Once a destination is selected by completing one of these sequences, **Destination Review** offers choices of how to get there.



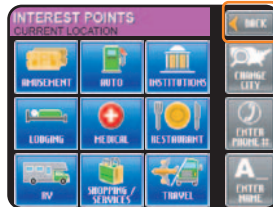
Navigate to destination.



Select from a list of entries or enter a location.



Save and organize destination entries for easy selection.



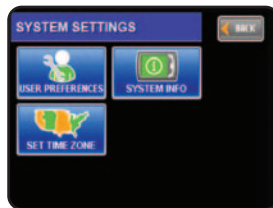
Choose a location from the system database.



Get back home from anywhere when home is set in the **Address Book**.



Map is an easy-to-grasp pictorial guide.



Customize the system.

LISTS

The NAV ONE system uses lists extensively to present information in a convenient form.

On those lists presented by the system, users can quickly bring up the desired item, then select it with just a touch of the screen.

After an item is selected, the NAV ONE system continues automatically to the next step in the process.

Take a moment to become familiar with maneuvering through lists on the NAV ONE.

NOTE

Lists are subdivided into pages of five items per page. The page numbers between the **Up** and **Down** buttons show both the current page and the total pages in the list.



Up Button

Press to advance by one page. Press and hold for rapid page-by-page advance.

Page Numbers

Current page / total pages.

Down Button

Press to advance by one page. Press and hold for rapid page-by-page advance.

The **Up** button is inactive at the top of the list.
The **Down** button is inactive at the bottom of the list.

NOTE

At any page, touch an item to select it.

MENU CHOICES

This section briefly describes each of the major **Menu** choices and lists some explanations of the buttons associated with them.



A trip destination can be selected from the list or a new destination can be entered as an address, a crossroad intersection or a city center. Each location entry screen shows the currently selected state and provides a way to change it. The entry screens also allow numeric and text entries by means of keypads on the touch screen. As these entries progress, the system presents only those subsequent characters on the keypads for which entries exist in the database.



Returns to the **Menu**.



Allows entry of an address.



Allows entry of an intersection.



Allows entry of a city name. The system returns the city's central location.



Moves the system to the next step for entering the location.



Brings up a list based on the characters already entered. Locations can be selected from the list without further text or numeric entries.



Returns to the previous step.



Brings up the alphabetic keypad.



On the alphabetic keypad, switches to the numeric keypad.



On the numeric keypad, switches to the alphabetic keypad.

Menu Choices



Stores and organizes locations for later use. The **Personal** folder is permanent; all other folders can be added or deleted by the user. Locations can exist in more than one folder, but the exact same entry cannot exist more than once in any given folder.



Returns to the **Menu**.



Allows creation and naming of folders within the **Address Book**.



Allows setting a location as the designated home point as the last step of entering it in the **Address Book**.



Allows selection of a symbol to represent a location on the **Map**. See **NOTE** at right.



Is the means of adding a location to an **Address Book** folder. From the display of the selected folder, the **Add Entry** mode allows choices from a specified location, the unit's current location, the list of interest points or an **Address Book** entry.

NOTE

If "Proximity Alert" icon is chosen, the NAV ONE will notify you if you are close to the selected **Address Book** location.



Allows destination selection from a list of public places. Within the twelve general categories of places, there are about seven million listings of points to which one might want to go.



Returns to the **Menu**.



Allows researching establishments in any place other than the unit's current location.

SEARCH BY NAME

Allows entry of an establishment name. For establishments with multiple locations, such as a restaurant chain, the system returns a list of up to 50 locations within a 50 mile radius of the current or changed location. If the desired item is not found, use **Change Location** to search another area.



Provides immediate routing from any location to the place that has been designated as home.



Returns to the **Menu**.



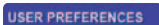
Displays the **Map** and starts navigation.



Provides the user with the ability to customize system and map preferences, set the time zone and view information about the software and database.



Returns to the **Menu**.



Brings up the list where general preference selections can be made.



Provides the current versions of system software and database.



Allows entry of the local time zone.



Brings up a list of available settings and explanations of available options.



Updates the system to changes made in the settings.



Tracks vehicle movements — either on or off the road. The route actually taken can be saved to retrace the route or repeat it in the future.

NOTE

This is not one of the six buttons on the **Menu**. It is reached from the **Map**: Map → More → Trail Recorder.



Shows a segment of the entire map as if through a window that can be moved to display any desired portion. The window can be zoomed in or out to reveal greater detail or a larger area. The system defaults to the map segment associated with the current activity.

When the system is in navigation to a destination, the route is highlighted on the map and maneuver details are presented as they occur.



THE TOP OF THE SCREEN CONTAINS A TRIP STATUS BAR THAT SHOWS:

- > Next Maneuver Detail
- > Direction and Distance to Destination
- > Distance to Next Maneuver
- > Zoom Level
- > Compass Heading
- > GPS Signal Strength
- > Estimated Time of Arrival

If the vehicle departs from the navigation route, the system will automatically recalculate and show the new route to the selected destination.

When not in navigation, the map shows the area around the vehicle and the system displays the name of the street on which the vehicle is traveling as well as the names of major intersecting roads as they are approached.

JUST TWO POWERFUL BUTTONS, AT THE RIGHT OF THE MAP DISPLAY, LEAD TO A WEALTH OF HELPFUL FUNCTIONS.



Brings up text displays to view and customize an array of **Trip Data** or to access a **Turn-by-Turn** maneuver list as an alternate to the graphic guidance of the **Map**.



Switches from the **Map** to an array of buttons that allows selection of trip changes, viewing information about the current location, activating **Trail Recorder** mode, obtaining traffic information and setting **Map** options.

THE FOLLOWING ARE THE PRINCIPAL BUTTONS THAT APPEAR IN VIEW AND MORE.



Is a display of information about the current trip.



Is an alternate to the **Map** during trip navigation. It provides a scrolling list of maneuvers from start to end of the trip.



Enables the user to stop navigation.



Allows the user to force the system to recalculate a trip in progress to avoid specific roads.



Allows the user the change route options.

Traffic Overlay



On and **Off** buttons determine if traffic information will overlay the **Map**.



Shows details of the traffic information feed.



Displays address, coordinates and street information for the vehicle's current location.



Shows the latitude, longitude and altitude of the vehicle as determined from GPS information.



Allows the user to set preferences for how the map and routes on it are displayed.



Is the final step in starting route calculation and moving to the **Map**.

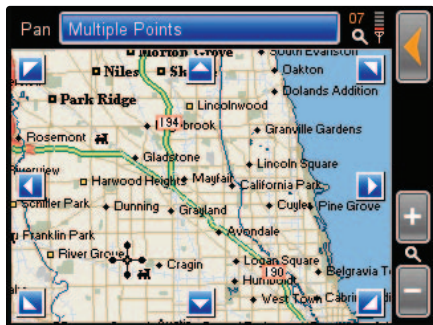


Allows creation of a “breadcrumb” trail.

INTERACTING WITH THE MAP

When the **Map** is displayed, the touch-screen feature of the NAV ONE makes it easy to work with. Touching the screen anywhere on the **Map** shows a list of locations at that spot and opens **Pan** mode to move around the map.

PAN MODE IS ACTIVATED



The panning feature is activated whenever the screen is touched. It brings up the eight arrows shown.

Touch any arrow and the window will move one half a window in that direction.

Press and hold an arrow and the window will scroll in that direction.



Touch a location to select it.

Touching a location on the map will show a list of locations at that spot and bring up the **Multiple Locations** button at the top of the display for further options.

Use the **Back** button if none of the destinations is desired.

NOTE

Press the **Return** button at any time to exit **Pan** mode.

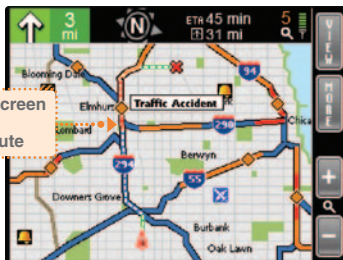
TRAFFIC DATA

When **Traffic** overlay is turned on (using Map → More → On/Off), the NAV ONE 4500 will indicate traffic conditions and incidents on the Map by colored segments and icons along the route. Changes that occur during navigation will prompt voice alerts.

Touching the screen at any of the incident icons will bring up information about the cause of the incident. Press the options button for re-route possibilities.



Map in navigation.



Re-route options.



▶ AUTO RECALCULATE

Will recalculate a route, taking into account the traffic information.

▶ COMPARE NEW ROUTES

Will calculate two new routes, allowing you to select your choice.

▶ NOTE

The NAV ONE 4000 functions the same as the 4500 when connected to the optional traffic receiver that can be purchased as an accessory. See the Accessories section at page 26.

▶ NOTE

The traffic receiver continuously monitors any available FM data channel for up-to-the-minute traffic information, then feeds it to the NAV ONE for processing. Traffic incident information is available only in selected major cities.

▶ NOTE

If you have a 4000 and would like a demo of the Traffic feature, select Traffic Overlay **On**.

SETTINGS

USER PREFERENCES

The following settings of user preferences are available.

The list can be reached using the sequence:

Menu → Settings → User Preferences

The **Information** button on the same screen opens a list of detailed explanations of the items. The factory defaults are highlighted to the right.

NOTE*

Zoom Hardkey During Map View is an advanced user feature. This setting will turn the **Volume Up/Down Hardkeys** to **Zoom In/Zoom Out** when viewing a **Map** screen. While in this mode, the user must press the **Speech Hardkey** first to adjust the **Volume**.

USER PREFERENCES

SETTINGS (DEFAULTS IN BOLD)

Units

Standard

Metric

Key Click

Beep

Silent

Auto Brightness

On

Off

Smart Power

On

Off

Startup Screen

Main Menu

Map

Zoom Hardkey During Map View*

On

Off

Speed Alarm

10-99

Off

Proximity Alarm

On

Off

Reset Factory Defaults

Delete All User Data

MAP OPTIONS

A second set of user preferences is available from the **Map** screen. These relate to the appearance of the map, to information included on it and to criteria used to calculate routes to be navigated.

It can be reached using the sequence:

Map → More → Map Options

The **Info** button on the same screen opens a list of detailed explanations of the items. The factory defaults are highlighted to the right.

MAP OPTIONS

SETTINGS (DEFAULTS IN BOLD)

Map View

Traditional

3D

Map Details

Simple

Normal, Full

Vehicle Icon

Arrow

Car

Auto Zoom

Manual

Auto Zoom Speed, **Auto Zoom Next Turn**

Map Direction

North Up

Direction Up

Allow U-Turns

Yes

No

Destination Time

Arrival Time

Time Remaining

Show Interest Points on Map

On

Off

MAINTENANCE

Very little maintenance is required to keep this NAV ONE system in good operating condition.

- > Keep the unit components clean by wiping with a soft lens cleaning cloth. Do not use solvents or harsh or abrasive cleaners, which could damage the case or scratch the display.

- > Protect the unit from moisture and from being dropped or struck by hard objects to prevent damage.

- > Consult the Cobra website (www.cobra.com) for the latest software and database updates.

TROUBLESHOOTING

PROBLEM

POSSIBLE CAUSE(S)

SOLUTION(S)

Display does not power up.

Power switch is turned off.

Turn the unit on with the **Power** button.

Fuse in 12V power cord is blown.

Check for green LED on 12v power plug. Unscrew the fuse holder, inspect the fuse and replace it if blown.

No voltage is present at the vehicle power port.

Troubleshoot vehicle wiring. NOTE for some power points, ignition key must be at RUN position for the point to be energized.

GPS indicator will not turn green.

GPS antenna cannot “see” the sky.

Move vehicle to open area and make sure the GPS antenna has a clear view of the sky.

System does not reflect movement while driving.

GPS is not working properly.

Is GPS signal indicator green? If yes, go to next step. If no, go to “GPS indicator will not turn green” step.

Vehicle motion is not evident or the Map is blank.

Geographic area is not fully mapped.

Drive to a main road. If the map shows the road, the system is working properly, but the area is not fully mapped.

Map is zoomed in too far.

Zoom out.

PRODUCT SERVICE

For any questions about operating or installing this new Cobra product, or if parts are missing
...**PLEASE CALL COBRA FIRST**...do not return this product to the store.

If this product should require factory service, please call Cobra first before sending the product. This will ensure the fastest turnaround time on any repair. If Cobra asks that the product be sent to its factory, the following must be furnished to have the product serviced and returned:

1. For Warranty Repair include some form of proof-of-purchase, such as a mechanical reproduction or carbon of a sales receipt. Make sure the date of purchase and product model number are clearly readable. If the originals are sent, they cannot be returned;
2. Send the entire product;
3. Enclose a description of what is happening with the product. Include a typed or clearly printed name and address of where the product is to be returned, with phone number (required for shipment).
4. Pack the product securely to prevent damage in transit. If possible, use the original packing material;
5. Ship prepaid and insured by way of a traceable carrier such as United Parcel Service (UPS) or Priority Mail to avoid loss in transit to:

Cobra Factory Service
Cobra Electronics Corporation
6500 West Cortland Street
Chicago, Illinois 60707 U.S.A.;
6. If the product is in warranty, upon receipt of the product, it will either be repaired or exchanged depending on the model. Please allow approximately 3 – 4 weeks before contacting Cobra for status. If the product is out of warranty, a letter will automatically be sent with information as to the repair charge or replacement charge.

For any questions, please call 773-889-3087 for assistance.

CUSTOMER ASSISTANCE

Should there be any problems with this product, or its many features not be understood, please refer to this owner's manual. For further assistance after reading this manual, Cobra Electronics offers the following customer assistance services:

FOR ASSISTANCE IN THE U.S.A.

- Automated Help Desk (English only) 24 hours a day, 7 days a week at 773-889-3087 (phone).
- Customer Assistance Operators (English and Spanish) 8:00 a.m. to 6:00 p.m. C.S.T. Mon. through Fri. (except holidays) at 773-889-3087 (phone).
- Questions (English and Spanish)
Faxes can be received at 773-622-2269 (fax).
- Technical Assistance (English only) www.cobra.com (on-line: Frequently Asked Questions).
- Technical Assistance (English and Spanish) productinfo@cobra.com (e-mail).

FOR ASSISTANCE OUTSIDE THE U.S.A.

- Contact the local dealer

TRADEMARK ACKNOWLEDGEMENT

Cobra®, HighGear®, microTALK®, Safety Alert® Traffic Warning System, Nothing Comes Close to a Cobra® and the snake design are registered trademarks of Cobra Electronics Corporation, USA.

Cobra Electronics Corporation™, iASAP™, Accelerated Satellite Acquisition Protocol Technology®, CobraMarine™, RoadReady™, SmartPower™ and NAV ONE™ are trademarks of Cobra Electronics Corporation, USA.

SiRF® is a registered trademark of SiRF Technology Incorporated.

Windows® is a registered trademark of Microsoft Corporation.

Tele Atlas® is a registered trademark of Tele Atlas, N.V.

Tele Atlas True Time Maps™ is a trademark of Tele Atlas, N.V.

C-MAP™ and C-MAP Navigation Technology™ are registered trademarks of C-MAP s.r.l.

Total Traffic Network is a registered trademark of Clear Channel Communications, Inc.

All other products names are trademarks of their respective owners.

USER LICENSE

Copyright © 2005 Cobra Electronics Corporation. All rights reserved.

This document and the software described in it are furnished under license and may be used or copied only in accordance with such license. Except as permitted by such license, the contents of this document and software may not be disclosed to third parties, copied or duplicated in any form, in whole or in part, without the prior written permission of Cobra Electronics Corporation. This document and software contain proprietary and confidential information of Cobra Electronics Corporation and its licensors.

Cobra grants the purchaser a limited license for use of this document and the software incorporated in the NAV ONE for its normal operation. **By using the NAV ONE, the purchaser agrees to be bound by the terms and conditions of this license agreement.** The purchaser acknowledges that the content of this document and the software are the property of Cobra and its licensors and are protected by copyright laws of the U.S.A. and international treaties. The purchaser agrees not to modify, decompile, disassemble, reverse engineer or reduce to human readable form the software or any part of it, nor to create any derivative works based on the contents of this document or the software. The purchaser agrees not to export or re-export this document or the NAV ONE to any country in violation of the export control laws of the U.S.A.

The contents of this document and software are for informational use only, and are subject to change without notice. Cobra and its licensors intend to provide their customers the most complete and accurate navigation information available at a reasonable cost from government and private data sources. However, all data sources have limitations and some have inaccuracies or are incomplete to some degree. These characteristics carry over to the NAV ONE as well.

Cobra encourages customers to report any errors found in our electronic maps by contacting technical assistance (available in English and Spanish) at productinfo@cobra.com (e-mail), by visiting our website: www.cobra.com, or by calling customer assistance (available in English and Spanish) at **773-889-3087** between 8:00 a.m. and 6:00 p.m. C.S.T. Monday through Friday (except holidays).

Restricted Rights Legend. For defense agencies: Use, reproduction or disclosure is subject to restrictions set forth in subparagraph (c) (1) (ii) of the Rights in Technical Data and Computer Software clause at DFARS 52.227-7013, and/or similar successor clauses in the FAR, or the DOD or NASA FAR Supplement.

WARRANTY

Cobra Electronics Corporation warrants that its Cobra NAV ONE, and the component parts thereof, will be free of defects in workmanship and materials for a period of one (1) year from the date of first consumer purchase. This warranty may be enforced by the first consumer purchaser, provided that the product is utilized within the U.S.A.

Cobra will, without charge, repair or replace, at its option, defective NAV ONE products or component parts upon delivery to the Cobra Factory Service Department, accompanied by proof of the date of first consumer purchase, such as a duplicated copy of a sales receipt. The consumer must pay any initial shipping charges required to ship the product for warranty service, but the return charges will be at Cobra's expense, if the product is repaired or replaced under warranty.

This warranty gives the consumer specific rights, and he or she may also have other rights which vary from state to state.

EXCLUSIONS: THIS LIMITED WARRANTY DOES NOT APPLY:

1. To any product damaged by accident;
2. In the event of misuse or abuse of the product or as a result of unauthorized alterations or repairs;
3. If the serial number has been altered, defaced or removed;
4. If the owner of the product resides outside the U.S.A.

All implied warranties, including warranties of merchantability and fitness for a particular purpose are limited in duration to the length of this warranty.

Cobra shall not be liable for any incidental, consequential or other damages; including, without limitation, damages resulting from loss of use or cost of installation.

Some states do not allow limitations on how long an implied warranty lasts and/or do not allow the exclusion or limitation of incidental or consequential damages, so the above limitations may not apply to some consumers.



CAUTION

Cobra makes no warranty as to the accuracy or completeness of the map data in the NAV ONE and disclaims any and all express, implied or statutory warranties, including any implied warranty of merchantability or fitness for a particular purpose. It is the user's responsibility to use this product prudently. This product is intended to be used only as a travel aid and must not be used for any purpose requiring precise measurement of direction, distance, location or topography.

ACCESSORIES

These accessories are available for the NAV ONE 4500 and 4000 models from a local Cobra dealer or directly from Cobra.



Deluxe carrying case organizes the NAV ONE and its accessories.



120V AC power supply allows use in the home or office.



External antenna allows GPS signal reception in heavily shielded vehicles and those with heated or metallic coated windshields.



Optional traffic receiver overlays traffic information on map when connected to the NAV ONE 4000. Comes standard with the NavOne 4500.

OPTIONAL ACCESSORIES

For pricing and to order by phone:

Call 773-889-3087 (Press 1 from the main menu)
8:00 a.m. - 6:00 p.m. Central Time. Mon. through Fri.
(except holidays)

Make check or money order payable to:

Cobra Electronics Corporation
6500 West Cortland Street
Chicago, Illinois 60707 U.S.A.
Attn: Accessories Department

To order online:

Please visit our website at: www.cobra.com.

Notes

**THE COBRA LINE OF QUALITY
PRODUCTS INCLUDES:**

CB Radios

microTALK® Radios

Radar/Laser Detectors

Safety Alert® Traffic Warning Systems

Handheld GPS Receivers

Mobile GPS Navigation Systems

HighGear® Accessories

CobraMarine™ VHF Radios

Power Inverters

Accessories



For more information or to order any of
our products, please visit our website:
www.cobra.com

©2005 Cobra Electronics Corporation
6500 West Cortland Street
Chicago, Illinois 60707 U.S.A.

Printed in the Philippines
Part No. 480-229-P
Version B