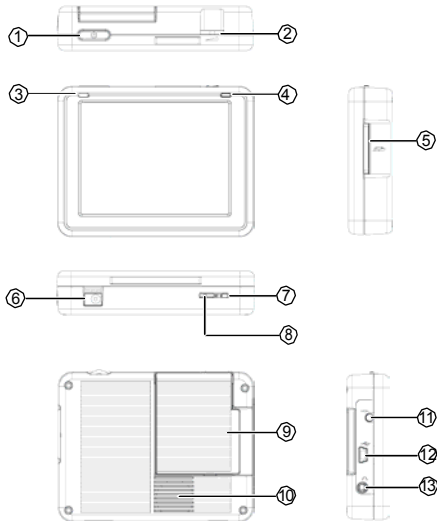


NAV-CAM

Quick Start Guide

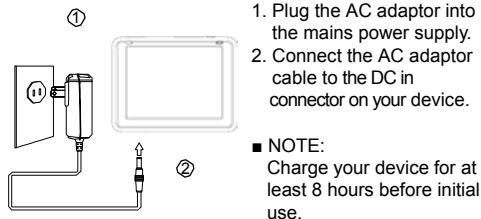


■ **CAUTION:**
Please read the NAV-CAM User Guide thoroughly before using your device, paying special attention to the **Important Safety Instructions** section. The full User guide & Hardware Manual can be found on the supplied CD / DVD.

1) Description

- | | |
|-----------------------------|------------------------------------|
| 1. Power button | 8. Hardware reset switch |
| 2. Volume dial | 9. Folding GPS antenna |
| 3. Power LED | 10. Speaker |
| 4. GPS LED | 11. External GPS antenna connector |
| 5. SD/MMC card slot | 12. Mini USB port |
| 6. DC/Mains input connector | 13. Headphone jack |
| 7. Soft reset button | |

2) Charge the Battery

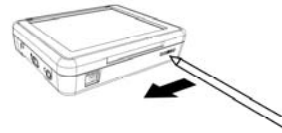


1. Plug the AC adaptor into the mains power supply.
2. Connect the AC adaptor cable to the DC in connector on your device.

■ **NOTE:**
Charge your device for at least 8 hours before initial use.

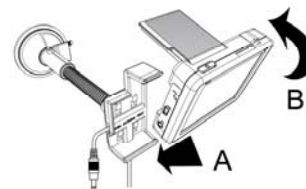
3) Switch the Device On

To switch the device on for the first time, slide the hardware reset switch left to the "ON" position.



■ **NOTE:**
After switching your device on for the first time, you should not use the hardware reset switch again unless you want to do a hardware reset. See "Resetting the Device" on page 36 of the Hardware Manual on the supplied backup CD / DVD for more information. Instead, use the power button on the top of the device.

4) Connect to the Car



1. Place bottom of NAV-CAM device into holder first, at a slight forward angle (Make sure antenna is extended first).
2. While pushing down, move top of NAV-CAM device back until it clips into place.
3. Plug in car charger.

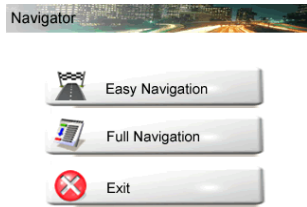
■ **NOTE:**
When removing NAV-CAM device, remember to push down before angling forward.
In order to receive a GPS signal the antenna should have a clear 'view' of the sky. The antenna will perform best when at a 90 degree angle, not fully upright.

5) Where to Find Information

In the supplied Hardware and software Quick Guides. Warranty information and support details are located on the supplied warranty card.
Full hardware and software manuals are provided on the Backup CD /DVD supplied in the box

Starting the Navigation Software

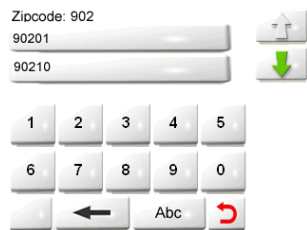
1. Switch the Nav-Cam 7700 on (shown as no.11 on the hardware diagram) and tap **Navigator** in the start screen.
2. Having launched the Nav-Cam 7700, read the safety instructions, if you accept the terms and conditions, tap the '**Accept**' button to launch Nav-Cam 7700. The following screen appears.
3. Your Nav-Cam 7700 has two menu modes available (see instruction manual for more details), select Easy Navigation mode.



4. Select the 'An Address' button to drive to a particular state, city or town, street, or Zipcode.



5. Next select the 'A Zipcode' button and this will open the numeric keyboard so that you can start entering a US Zipcode or Canadian postcode (if required tap the 'Abc' button to access the alphabetic keyboard). As the number is typed into the device it will select the most relevant matches from the Nav-Cam 7700 database.



6. Once you have found your matching Zipcode tap the relevant button and you will then start navigating.