



## Addendum I

# LCX Sonar/GPS Series 25, 26, 110, 111 and GlobalMap® GPS Series 6500, 6600, 7500, 7600

This addendum addresses the manuals for the units listed above (part 988-0151-311 for the LCX sonar/GPS units and 988-0151-331 for the GlobalMap GPS units). Since the manuals were written, some changes have occurred to these units. These changes will affect the installation and operation of your unit, and include:

### **Map Dataset Choice Menu (LCX-26, 111; GlobalMap 6600, 7600)**

- The Map Dataset Choice menu, featured only in the hard drive units, now has a Lowrance MMC/SD option.
- The units without a hard drive (LCX-25, 110 and GlobalMap 6500, 7500) no longer have the Map Dataset Choice menu, as indicated in their respective manuals.

### **Navigate Trail or Route**

- The Navigate Trail/Route procedure has changed from the instructions listed in the manual. The procedure no longer includes the step featuring the Navigate Option window.

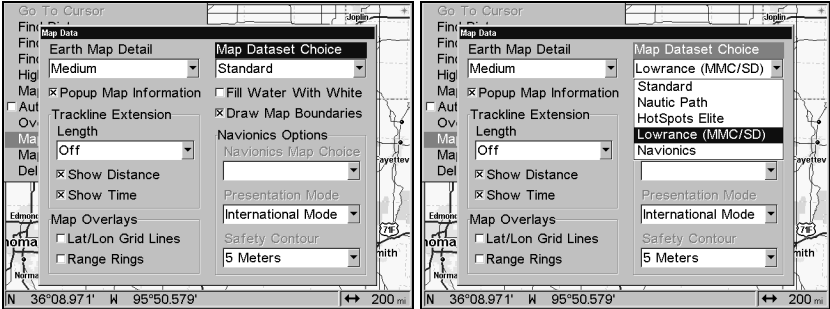
### **Installation**

- The LCX manual (part 988-0151-311) did not include MMC card installation instructions for the LCX-110 and LCX-111. This addendum describes those steps.
- Both the LCX series and the GlobalMap series have two communications ports to exchange NMEA 0183 position data with other devices. This addendum includes the wiring diagram for Com Port 2.
- The drawings showing unit dimensions and cable connections for the LCX series (manual part 988-0151-311) have changed.

### **Map Dataset Choice menu**

- The Map Dataset Choice menu, now featured only in the units with the 20 gigabyte hard drive (LCX-26C HD and LCX-111C HD), has five options: Standard, NauticPath™, Fishing Hot Spots® Elite, Lowrance MMC/SD and Navionics®. The Standard, NauticPath and Fishing Hot Spots Elite settings pull information from the unit's hard drive, so there is no need to place a card into one of

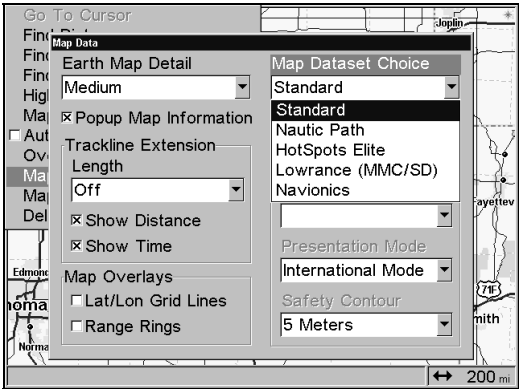
the MMC drawers or doors on the front of the unit. The other two choices, Lowrance MMC/SD and Navionics, require an MMC, SD or Navionics card. You must select the Lowrance MMC/SD setting to view information on a MMC or SD card, just as you must use the Navionics setting to view information on a Navionics card.



**Map Dataset Choice menu (left) for the LCX-26C HD and LCX-111C HD with the Lowrance MMC/SD option selected (right).**

**Caution:**

*Be sure and switch the Map Dataset Choice setting back to Standard when you are finished with one of the other four chart options. Otherwise, you will see only the basic background map instead of the high detail custom map built into the unit's hard drive.*

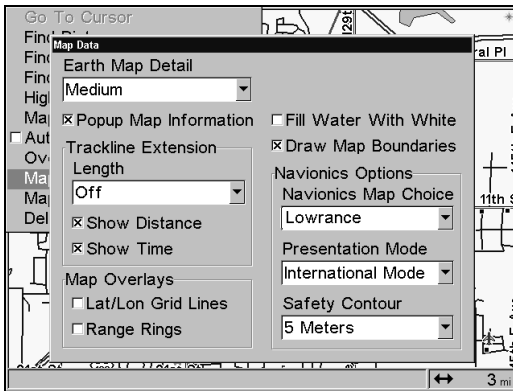


**Map Dataset Choice menu with Standard selected. The Standard option gives you access to the high detail map on the unit's hard drive.**

**NOTE:**

The LCX-25C and LCX-110C do not have the Map Dataset Choice menu. To access an enhanced detail custom map (made yourself with MapCreate™ software), a FreedomMap™, a NauticPath, Fishing

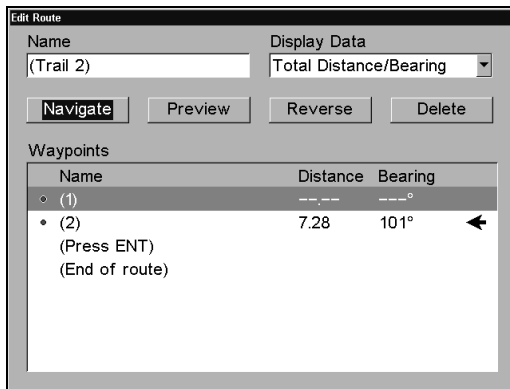
Hot Spots, Fishing Hot Spots Elite or Navionics chart, you must insert an MMC or SD card containing the mapping data into one of the MMC drawers or doors on the front of the unit. Choose the default Lowrance setting to view a MapCreate, FreedomMap, NauticPath, Fishing Hot Spots, MMC or SD card. Only when a Navionics card is loaded in the MMC drawer will you be able to select the desired Navionics chart from the Navionics Map Choice menu.



The Navionics Options menu for the LCX-25C and LCX-110C with the default Lowrance setting chosen.

## Navigate Trail/Route procedure

The Navigate Trail or Route procedure has changed. In the manual, it says after pressing the Navigate button a Navigate Option window will appear asking if you want to be prompted or directed to intermediate waypoints along the trail or route. That will not be the case with your unit.



**Highlighting NAVIGATE and pressing ENT is the last command needed to navigate a trail or route from the Edit Route screen.**

Here is the proper procedure for navigating a trail or route:

1. From the My Trails or Route Planning menu, press ↓ to the Saved Trails or Saved Routes list.

**To navigate a Trail:**

2. Use ↑ ↓ to select a trail, then press ENT | → ↓ to NAVIGATE | ENT. Press ↓ to NAVIGATE and press ENT.

3. Upon arrival at your destination, cancel navigation by pressing MENU | MENU | ↓ to CANCEL NAVIGATION | ENT.

**To navigate a Route:**

2. Use ↑ ↓ to select a route, then press ENT | ↓ to NAVIGATE | ENT.

3. Upon arrival at your destination, cancel navigation by pressing MENU | MENU | ↓ to CANCEL NAVIGATION | ENT.

**Installation**

**MMC or SD Memory Card Installation for LCX-110 & LCX-111**

In the LCX-110 and LCX-111, the two MMC slots are located in compartments on the front of the case. The water-proof compartment doors are located at the lower right corner. The following figure shows a close-up of one compartment with the door opened.



Memory card compartment with a 16 MB MMC card installed.

**To remove an MMC or SD Card**

1. Open the card compartment door by unscrewing the thumb screw. The screw should only be finger tight. If it was over-tightened, use a thumbnail, a coin or a screwdriver to open the door.

2. Use the ball of your finger or thumb and press down in the center of the card, then drag the MMC from the slot. Or, use a thumbnail or fingernail to grab the groove in the bottom of the MMC and drag it out. See the figure above for the groove location.

### To add an MMC or SD Card

1. Open the card compartment door.
2. Grasp the bottom of the MMC and push the top of the card into the slot. Once the card is started, press down in the center of the card with the ball of your finger or thumb and push the card all the way to the left, until it is firmly seated in the slot.
3. Close the compartment door and fasten the thumb screw finger tight.

### Com Port Wiring

The Com-2 communications port wiring diagram below was omitted from the LCX manual (page 33) and the GlobalMap manual (page 16). Com-1 can send or receive NMEA 0183 data; Com-2 can only send NMEA 0183 data.



Com-2 wiring to transmit NMEA position information to another NMEA-compatible device.

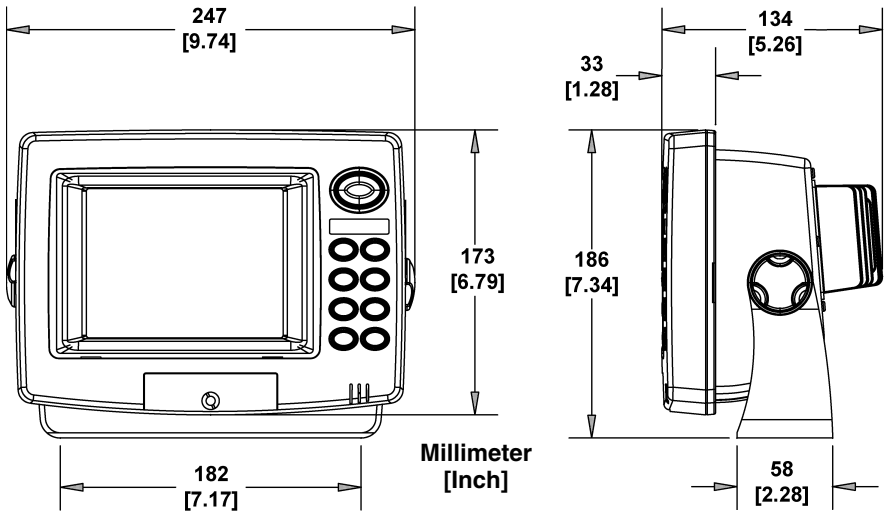
### In-Dash and Bracket Installation

The in-dash mounting dimension drawing on page 38 of the LCX manual is only for the LCX-25 and LCX-26. No dash mount kit is available for the LCX-110 and LCX-111.

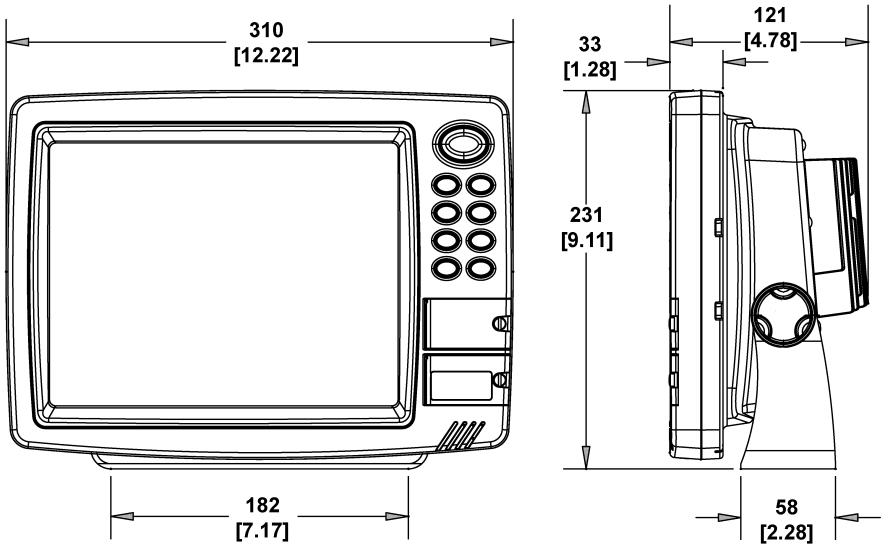
In the LCX manual, the drawing on page 37 for an LCX-25 or LCX-26 is incorrect. A similar drawing for the LCX-110 and LCX-111 was omitted. Both corrected drawings are shown on the following page.

### Cable Connections

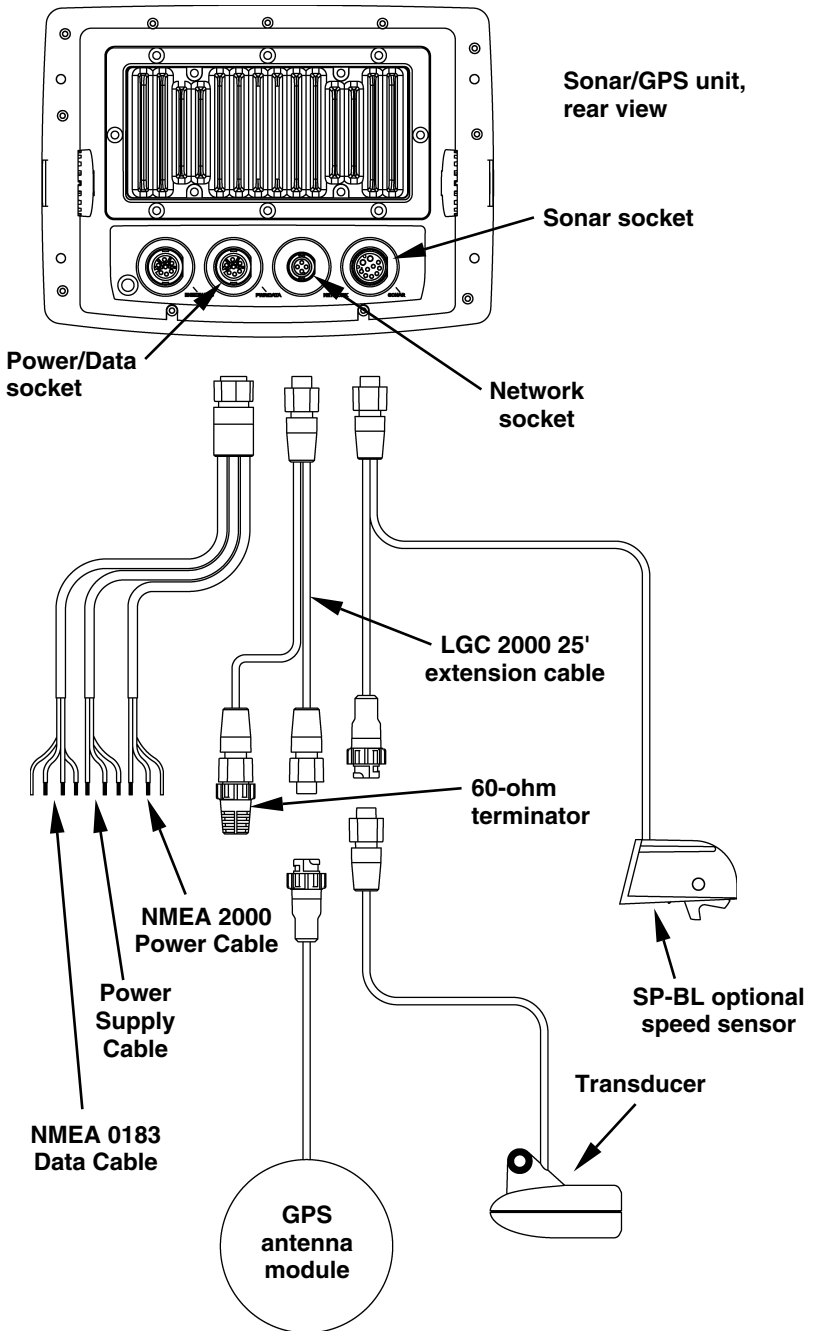
Following the mounted dimension drawings are illustrations showing cable connections for the two case types in the LCX series. They correct page 34 in the LCX manual.



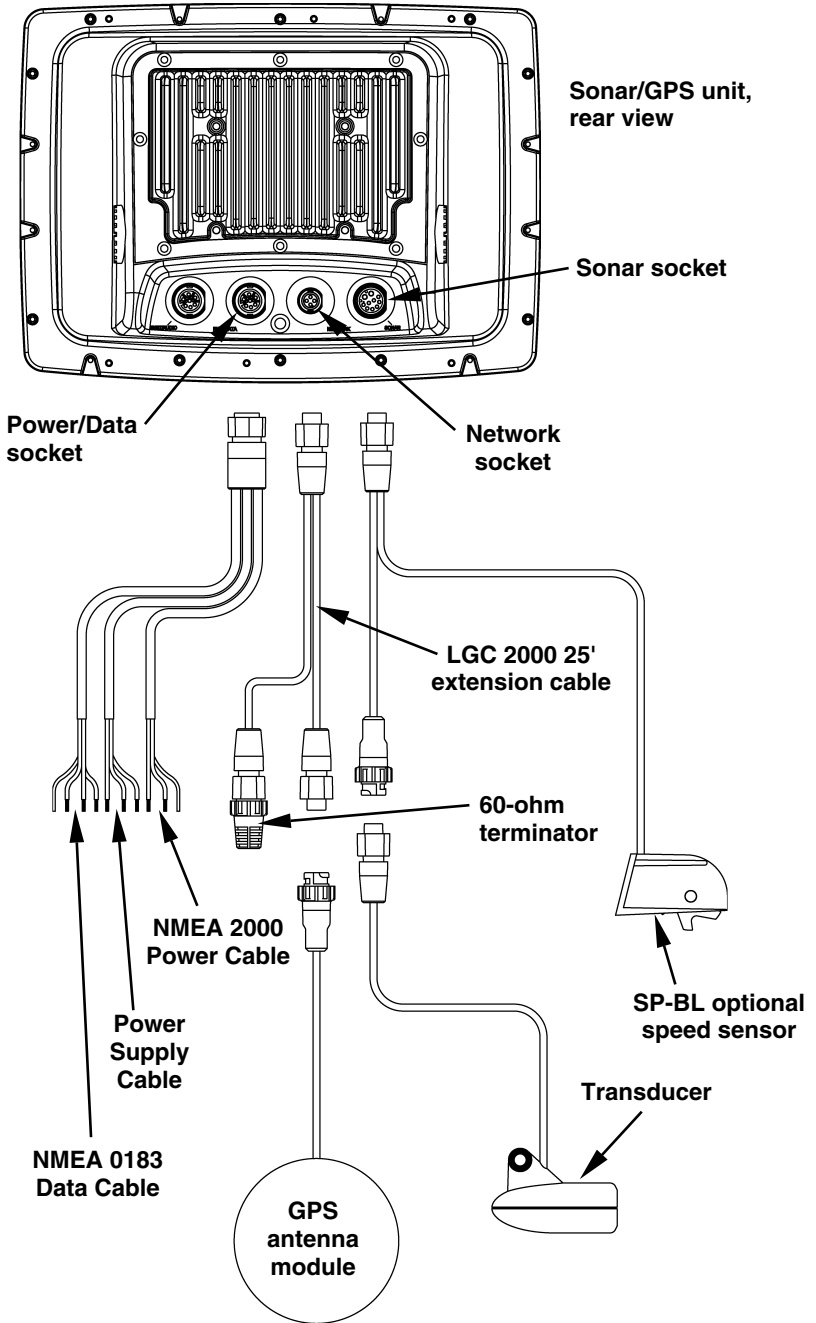
Front view (left) and side view (right) showing dimensions of the LCX-25 and LCX-26 mounted on gimbal brackets.



Front view (left) and side view (right) showing dimensions of the LCX-110 and LCX-111 mounted on gimbal brackets.



**Cable connections, LCX-25 and LCX-26.**



**Cable connections, LCX-110 and LCX-111.**