

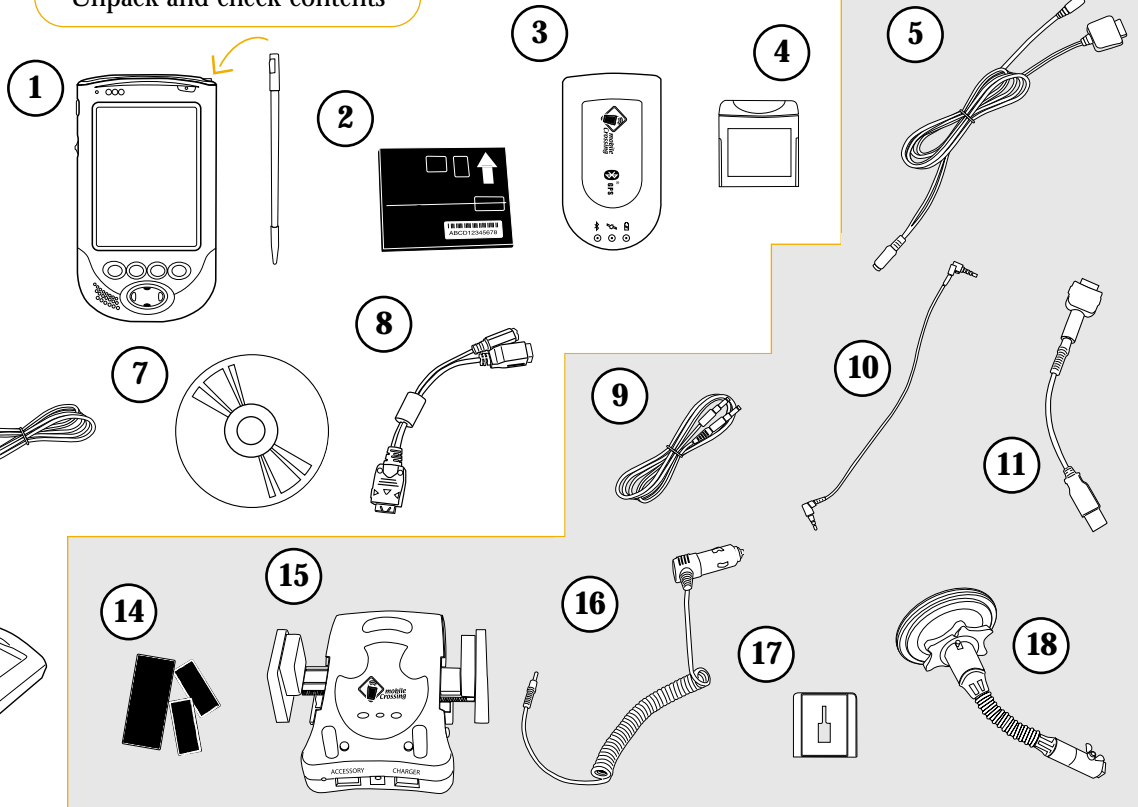
# Quick Start Guide WayPoint 200

## A Contents

Unpack and check contents

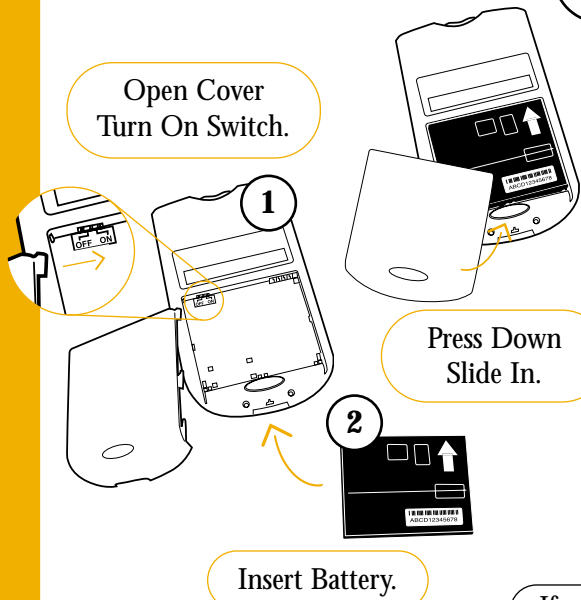
Boxes

1 2



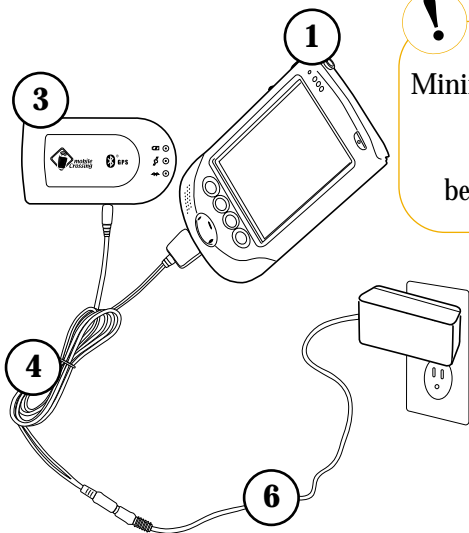
## B Getting Started

Open Cover  
Turn On Switch.



Press Down  
Slide In.

Insert Battery.



! Charge  
Minimum 8 hours  
before using.

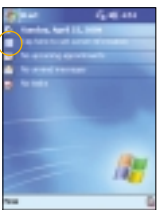
If you do not intend to use this unit with a personal computer then skip step D.

## C Calibration and Registration

After charging, turn on the  
WayPoint. (Using the power button  
on the front, top right of the pda).

Follow the screen directions to calibrate.

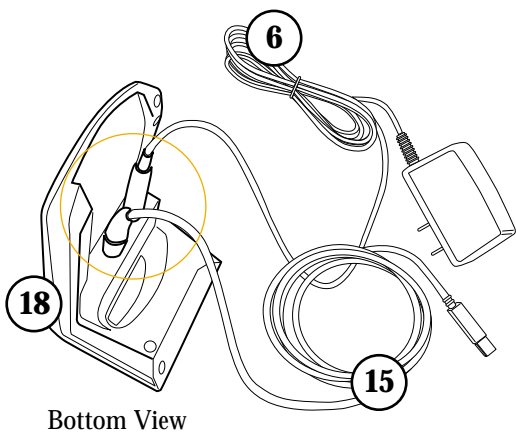
Tap here to set  
owner information.



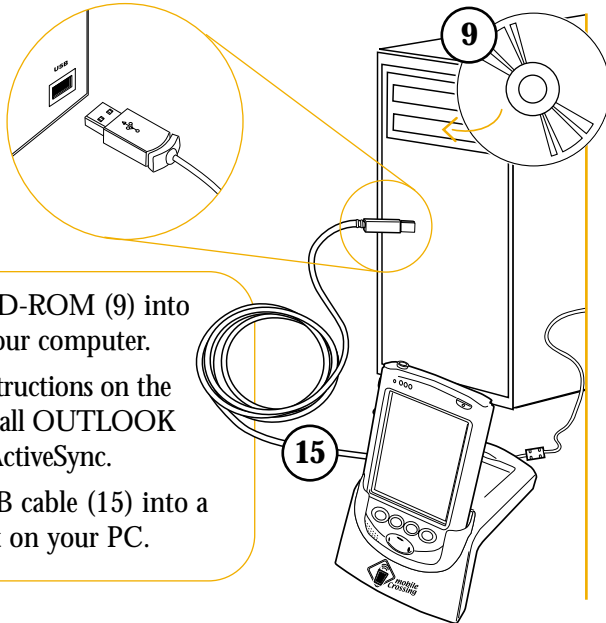
Click the keyboard  
button in the lower right  
corner of the screen.

## D Optional Computer Setup

Optional: When Installing Cradle  
for Computer Setup (Step D).  
Insert cables (4) and (6).



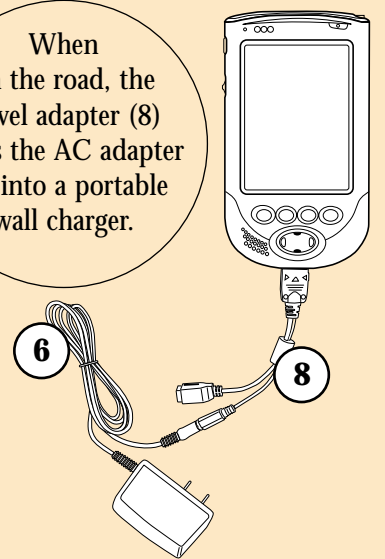
Bottom View



Insert the CD-ROM (9) into  
a drive on your computer.  
Follow the instructions on the  
screen to install OUTLOOK  
and ActiveSync.  
Insert the USB cable (15) into a  
USB slot on your PC.

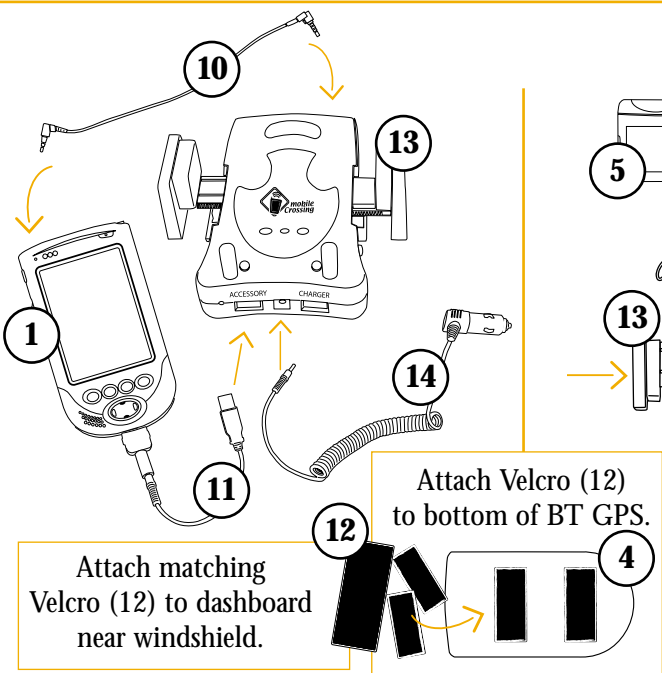
## Travel Tip

When  
on the road, the  
travel adapter (8)  
turns the AC adapter  
(6) into a portable  
wall charger.



## E Installing your WayPoint in a Car

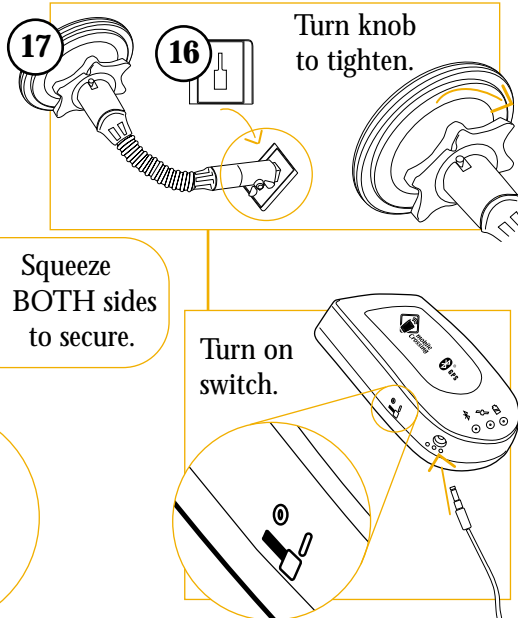
Connect cigarette lighter  
plug (14) to lighter socket.



Attach matching  
Velcro (12) to dashboard  
near windshield.

Attach Velcro (12)  
to bottom of BT GPS.

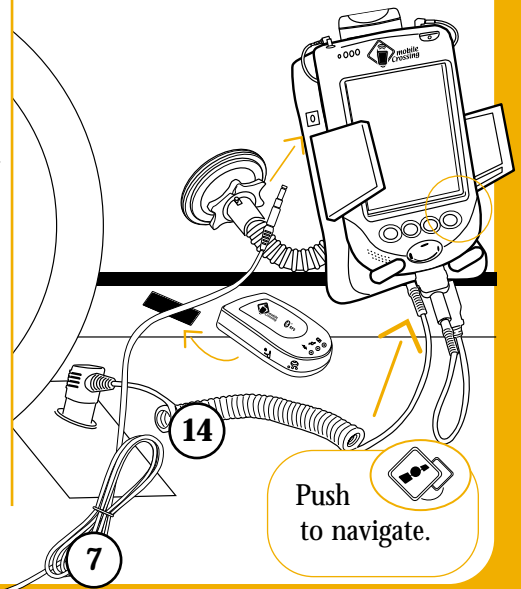
Press button  
to release  
PDA from  
car mount.



Turn knob  
to tighten.

Squeeze  
BOTH sides  
to secure.

Turn on  
switch.



Push  
to navigate.