

Manual for Personal Navigation Devices



You have chosen a high end navigation system. Congratulations! Please enjoy using it. This navigation system leads you straight to your destination, whether you are traveling by car or on foot. You may navigate and plan your route with an easy to use and intuitive interface, just by using your finger. You may also use this application to plan your trip to suit your personal preferences and interests and to save interesting destinations before you set off on your trip. This guide leads you through the main features of the system.

Contents:

I. QUICK START	3
NAVIGATE TO AN ADDRESS	4
NAVIGATION SCREEN	6
RICH GUIDANCE OPTIONS	7
II. DETAILED DESCRIPTION	
FIRST SETTINGS	8
ADVANCED SETTINGS	9
MAIN MENU CONTENTS	10
HOW DO I SET MY DESTINATION?	12
HOW CAN I PLAN MY ROUTE?	17
HOW DO I SELECT ADDRESSES ON THE MAP?	19
OPTIONAL FEATURES	21
III. MyGuide MapMaker	26
IV. FREQUENTLY ASKED QUESTIONS	35

I. QUICK START

This section will walk you through using your navigation unit for the first time, acquainting you with the basic operation of the navigation system. The functions and buttons not mentioned will be described in Chapter II: Detailed Description.

- Switch the unit on and tap **NAVI** or **NAVIGATION** in the start screen.

After the application loads the Main Menu (Home) will appear:



- Select **Navigate** to set your destination.

The Finder menu opens:



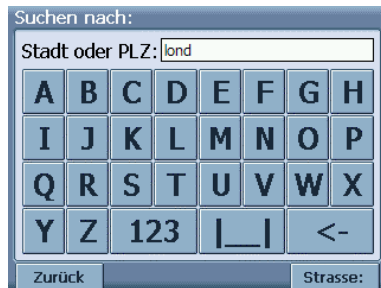
You have various ways to select your destination. The following page describes how to navigate to a specific address.

NAVIGATE TO AN ADDRESS

If you have the city and street address for your destination, simply enter it and the application will guide you directly there.

- Tap the **Address** icon.

The address search screen with the keypad will now appear in the display:



The screenshot shows a search interface titled "Suchen nach:". Below the title is a text input field labeled "Stadt oder PLZ:" containing the text "lond". Below the input field is a 4x4 grid of buttons representing a QWERTY keyboard. The buttons are: Row 1: A, B, C, D, E, F, G, H; Row 2: I, J, K, L, M, N, O, P; Row 3: Q, R, S, T, U, V, W, X; Row 4: Y, Z, 123, |_|, <-|. At the bottom of the keypad area, there are two buttons: "Zurück" on the left and "Strasse:" on the right.

- Switch between letter and number mode by pressing **123** or **ABC**.
- If at any point you want to Backspace and delete characters, press the **backspace button <-** on screen. To add a space, press the **space bar |_|**.
- Tap on the **City or P.C.** field and enter your destination by tapping on the letters in the keypad (at least three characters). Instead of the city you may also enter the postal code. Confirm the City/postal code you have entered by pressing **Search**. On the following screen, choose the appropriate city from the list by tapping on it. This will move you to the street search screen.
- On the street search screen you may enter the street name (at least three characters) and then press **Next** to go on.

- Next, you may enter the number. Confirm and move to a list of matching address by pressing the **Search** button.

NOTE: If you have an imprecise address, such as “Trafalgar Square, London”, you can enter that as well, the only requirement is to enter some letters of the city name to begin your search.

After a few seconds you will be presented with a hit list of locations that match the address entered.

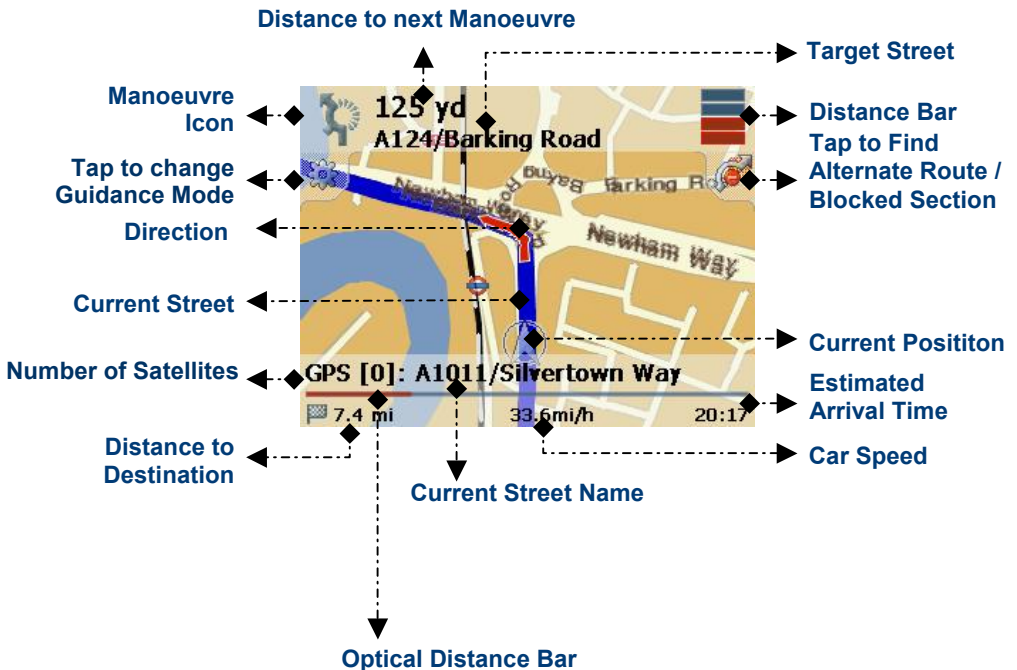
- Select the required address from the hit list by tapping on it.

Once the system receives a GPS signal the guidance will commence automatically. The navigation map will be shown, displaying all directions needed. Additionally, you will be guided by clear voice commands.

You can set further options for navigation by tapping on the screen. A menu with rich guidance options will be shown

NAVIGATION SCREEN

The Navigation Map will now appear and will show the route in blue. The red arrow will indicate the direction of your next manoeuvre. A white arrow will identify your current position. When you come up to a turn or other manoeuvre, you will hear a voice command at the appropriate time.

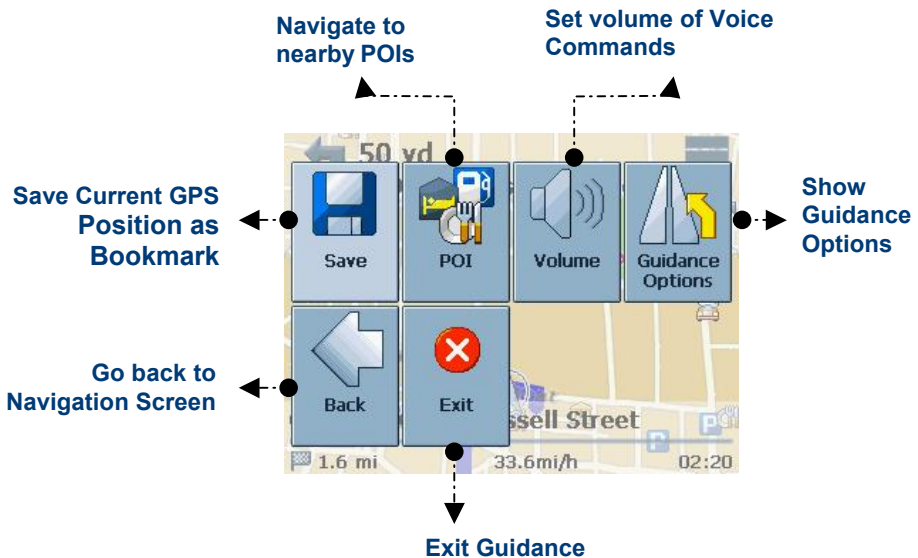


RICH GUIDANCE OPTIONS

- Touch the screen during the guidance to view the Navigation Options.

Note: Guidance, including voice commands, will continue even as you are in the Options screen.

You may save your GPS position as bookmark, record your route, look for latest traffic information, change your destination to a Point of Interest, etc.



II. DETAILED DESCRIPTION

FIRST SETTINGS

- Switch the unit on and tap **NAVI** or **NAVIGATION** in the start screen.

After a short period of time the Main Menu (Home) will appear.

- Choose **Settings** and then **Guidance Options**.

The Route Settings window will be displayed:



You can choose among the following options: Fastest or shortest route, pedestrian or car mode (and more), setting distance unit, allowance or avoidance of toll roads, highways, ferries and tunnels.

- To switch between the modes just touch the icons. These will toggle so you can quickly see the activated settings.
- With **Back** you go back to the Main Menu.

ADVANCED SETTINGS

- Choose **Settings** and then **Language Settings** to select the language of your navigation system.
- Or choose **Settings** and then **General Options**:



Here you have following options:

- Via **Set Home Position** you can determine your home address. Enter city, street etc. and press **Search**. Then touch the **Home position** once to save it.
- Via **Set Work Position** you can determine your workplace or another address you use frequently.
- If you have map data for different regions/cities on your memory card, press **Current**. All available maps on the memory card will be listed and you can choose by simply tapping the desired region.

NOTE: All information like Settings, Bookmarks and also the Recent items will be stored on the memory card and not on the device.

MAIN MENU CONTENTS

The interface of the Main Menu is coherent throughout the whole navigation system. Via the Main Menu you may access all functions.

- Start the navigation system by pressing **NAVI** or **NAVIGATION** in the start screen.

After a short period of time the Main Menu will appear:



If you want to start your route guidance straight away to the home address you have previously configured in the Settings menu (see section 'Advanced Settings'), press **My Home**.

To choose another destination, select **Navigate**. You may then select your destination point from a Guide, by consulting a Map or Address Search, or via your personal bookmarks like Home or Work addresses.

By selecting **Plan route** you switch to the advanced route planning options. There you may plan your route by choosing multiple stopovers.

Via **Settings** you may determine following options:
Guidance Options: Fastest or shortest route and car or pedestrian mode. Furthermore you can allow or avoid toll roads, highways, ferries and tunnels.

Language Settings: Here you may select other languages. You have following languages to choose from: English, German, French, Spanish, Italian, Portuguese, Dutch and Turkish.

General Options: You may set your home position etc. (see section 'Settings'). Furthermore the currently used map data will be announced. If you have more countries on your memory card, you may switch to another country.

Press **Track** to show your current GPS position.

You may also explore a town/city or its surroundings on a **Map** (General Map) and select places or points of interest by tapping the map. You may also use these for navigation and for planning your route.

Guide is a unique feature. Branded travel/city guides will help you to find out what is nearby and will give you valuable information about attractions, restaurants, hotels, etc. with detailed descriptions. You may then use these for navigating, or save the location as a Bookmark. The (city-) guides may be purchased optionally.

With the **POI** finder you can quickly find Points of Interest nearby like gas stations and restaurants that are chosen from a database of millions of POI.

At the bottom of the screen, your GPS status will be displayed all the time, showing the current street you are on and the number of satellites the GPS system is currently tracking.

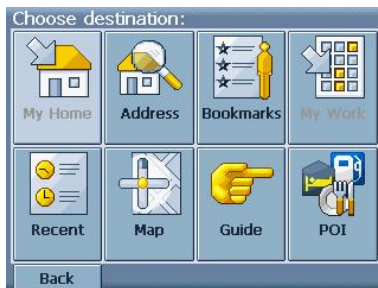
With **Exit** you quit the navigation system.

HOW DO I SET MY DESTINATION?

You may choose your destination using your Home address, the Address Search, Bookmarks, your Work address, Recent searched destinations, Guides, the Map or via the POI finder.

- Press **Navigate** in the Main Menu.

The Finder menu opens:



- Press **My Home** to start directly your guidance to your home address. The route guidance system will start automatically.

Note: For this you have to predetermine your Home address via **Main Menu → Settings → General Options → Set Home Position**.

- Via **Back** you may always step one level back throughout the whole application.

Alternatively you may use the other destination setting possibilities (see following pages):

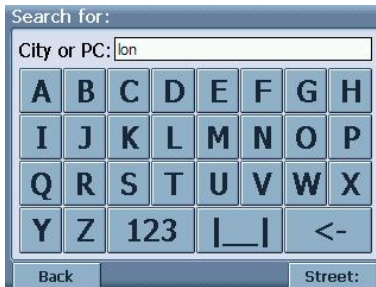
Address search

Through the Address search you can perform a search by entering information about the desired target (street and town/city). You may then select a hit from the hit list and start navigating. You can also search for addresses if you want to plan

a route with several stopovers. Alternatively, you may wish to pinpoint a specific location.

- To start this function, click on the **Address** icon.

The Address search with the keyboard will now appear in the display:



- Switch between letter and number mode by pressing **123** or **ABC**. Switch between upper case and lower case by pressing **^**.
- If at any point you want to Backspace and delete characters, press the **backspace button <-** on screen. To add a space, press the **space bar |_ |**.
- Tap on the **City or P.C.** field and enter your destination by tapping on the letters in the keypad (at least three characters). Instead of the city you may also enter the postal code. Confirm the city/postal code you have entered by pressing **Search**. On the following screen, choose the appropriate city from the list by tapping on it. This will move you to the street search screen.
- On this screen you may enter the street name (at least three characters) and then press **Next** to go on.
- Next, you may enter the number. Confirm and move to a list of matching address by pressing the **Search** button.

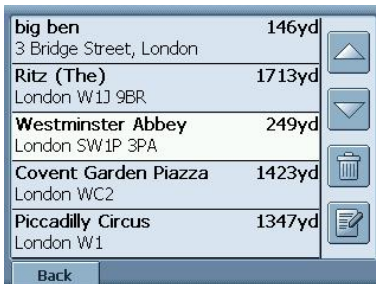
- The hit list will be displayed.
- Select the desired address from the hit list.

Navigation will start automatically after selection. Clear visual and voice commands will guide you along the route. (The Navigation Map and Guidance Options are described in ‘Navigation Screen’.)

Bookmarks

The Bookmarks list contains the destinations you have saved as favorites (from the Guides, from your Address Search, etc.). There is no need to perform repeated searches for those destinations.

- Press on the **Bookmarks** icon.



- Use the **Up** and **Down** arrows to scroll up and down in the list. Select an item by clicking on it.
- With the **Trashcan** icon you may delete a marked entry.
- Select an item and tap on the **Edit** icon (bottom right) to edit the entry.
- Touch an entry to start the navigation.

My Work

- By pressing on **My Work** you will be guided directly to your workplace or another frequently visited location.

Note: For this you have to predetermine your workplace via **Main Menu → Settings → General Options → Set Work Position**

Recent

- By pressing **Recent** a list with the recent visited and searched destinations will be opened. (See also instructions in section 'Bookmarks'.)



Map

Via **Map** you can move on the map of the surrounding area and select items for guidance. (See also 'How do I select addresses on the map?'.)

POI

You may also select a destination via the **POI** (Points of Interest) finder. Here you may choose among frequently used categories such as Gas Station, Restaurant, Parking, Car Park, Hotel, Sights and Airports.



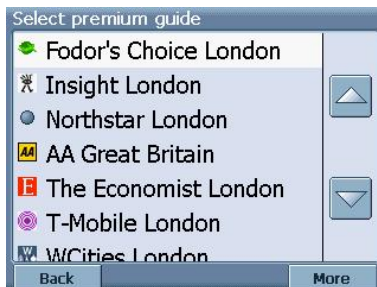
- By pressing **More** you will switch to the full POI list.

Guides

Guides are an optional feature and may be purchased at:
www.gate5.de

- Press on **Guide** and the guide list for the current region you are in will be opened.

You may choose a guide item as destination, save it as bookmark or pinpoint the location. (See also section 'How do I use guides?'.)



HOW CAN I PLAN MY ROUTE?

Using the Advanced Route Planning Options you may plan your route with multiple stopovers along your journey.

- To start this function select **Advanced** in the Main Menu.

The Destination List will be displayed:



- By pressing the **+** icon you can add a stopover.

You will switch to the Choose stopover screen, which looks the same like the Destination Finder screen and is exactly the same to use. You may choose stopovers via your Home Address, the Address search, Bookmarks, your workplace, Recent locations, Guide, Map and POIs.



Once you have added stopovers (with the **Add** Icon) and returned to the Destination List, you have several options:

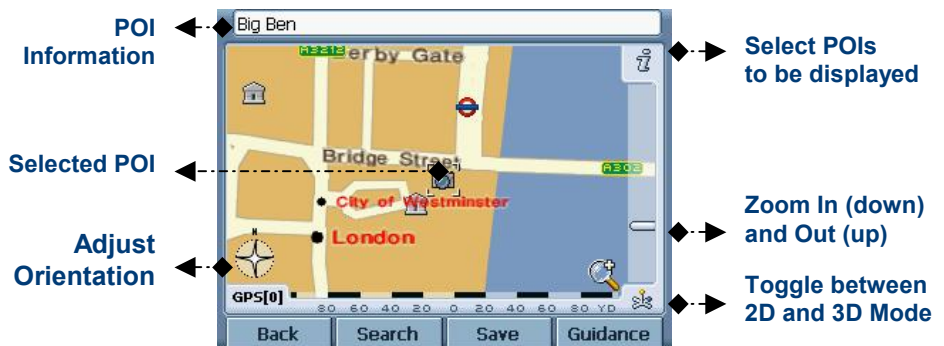
- With the **+** icon you can add more stopovers.
- Select a Stopover and then use the **Up** and **Down** arrows to change the order of the stopovers.
- With the **Trashcan** icon you can delete a selected stopover.
- Via **Menu** you may start following functions:
 - With **Start Simulation** you can simulate the forthcoming route.
 - By pressing **Start Navi** the guidance will start automatically and the display will switch to the navigation map.
 - With **Show Route** the system will calculate your route and the **Summary** will be displayed.
 - Select again **Menu** to display the **Waypoints** or the **Map View**.

HOW DO I SELECT ADDRESSES ON THE MAP?

The Map (General Map) not only shows roads and squares, but also Points of Interest such as restaurants, cultural attractions, parking garages, etc.

- To start this function press the **Map** icon in the Main Menu.

The General Map will now appear in the display:



Functions of buttons

- Discover your surroundings by dragging the map with your finger (or with the pen).

Note: Alternatively you may also use the joystick on the device!

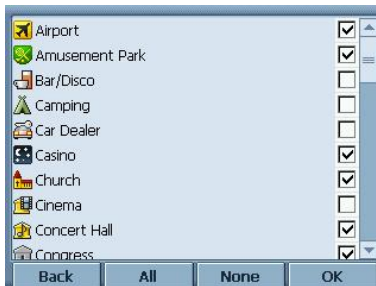
- Point at the symbol of a location to display its name.
- Choose a location as destination by pressing **Guidance** or **Save** it as bookmark.
- Via **Search** you switch to the Search Menu.

Further functions

- Use the **Scroll Bar** on the right to zoom in (down) or out (up) on the Map.
- Use the symbol in the bottom right-hand corner to toggle between **2D and 3D view**.
- With the **Compass icon** (in the bottom left hand corner) you may adjust you orientation.

Map Info

- Use the **i symbol** (top right) to select locations to be displayed on the Map. The Map Info Layer screen will appear:



In the check box to the right you may choose which Points of Interests you wish to be displayed on the map.

- By pressing **All** you will select all POIs. If you do not want any POIs to be displayed on the map select **None**.
- Confirm with **OK** or cancel your changes with **Back**.

OPTIONAL FEATURES

Following features are optionally available for your navigation system:

- City Guides
- Route Recording
- Traffic Information System (TMC)

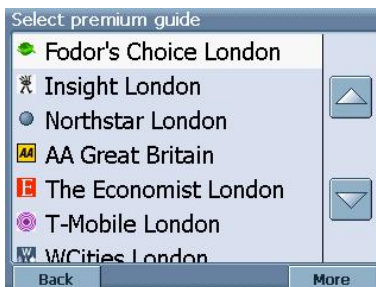
HOW DO I USE GUIDES?

Guides are an optional feature and may be purchased at: www.gate5.de

City Guides, available at www.gate5.de, contain lots of valuable information to enhance your experience, such as descriptions, contact information, prices, opening times, etc.

- Select **Guide** in the Main Menu.

The guide list will appear:



- Select the guide you wish to use by clicking on it.

The Categories tab of the chosen guide will be displayed:



- Under **Categories** you may select from the different categories of the Guide (e.g. restaurants, hotels, bars, museums etc.).
- Use the **Up** and **Down arrows** to scroll in the list.

Some Guides also offer subcategories.

- By clicking on a Category or Subcategory the system will search for relevant items.

The Hit List will display the Search Results, ordered by distance. You may select a found item directly for guidance.

Alternatively you may search in the guide for entries by using the search function.

- Select a guide and press **Search**.



- (e.g. characters) and confirm

The Hit List will be displayed:



- Select an entry by tapping on it.

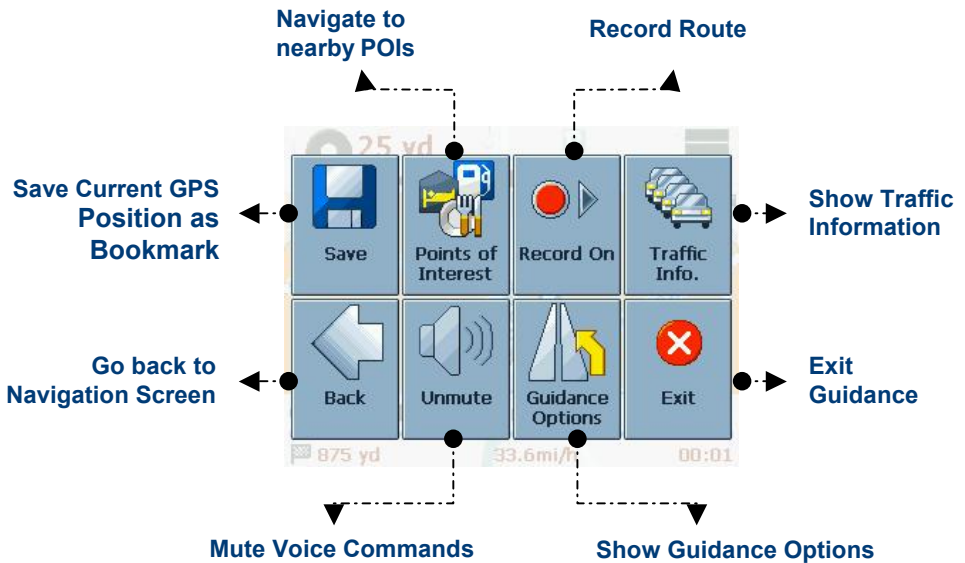


- Get detailed information about the selected location via **Detail**.
- Explore the location surroundings via **Map**.
- You may use this item for the guidance by pressing **Navi**.
- Via **Save** you may save the item as a Bookmark.

HOW CAN I RECORD MY ROUTE?

The Route Recording function enables you to record your routes. You may save your traces and import them in all kind of NMEA programs. By that you can e.g. document your trips.

- To do so, tap the display during navigation and select **Record On**. The button will toggle to **Record out** and will store your route until your tapping on it once again.
- Via **Back** you step back to the navigation screen.



HOW CAN I USE DYNAMIC TRAFFIC INFORMATION?

Dependent on your device, you may upgrade your navigation system and receive dynamic traffic information (TMC).

- In the main menu choose **Settings** and then **Guidance Options**.

The Route Settings window will be displayed:



- By tapping on the **TMC** button you may choose between automatic TMC, manually TMC or disable the function.

If you switched on the automatic TMC option, the system will automatically guide you around all the traffic jams on your route. By having activated the manual option, your navigation system will alert you about traffic jams and ask you, if you would like to switch to an alternate route.

III. MyGuide MapMaker

The MyGuide MapMaker incorporates 3 simple steps that enable you to create customized maps and save them on a memory card for use with a supported handheld device.

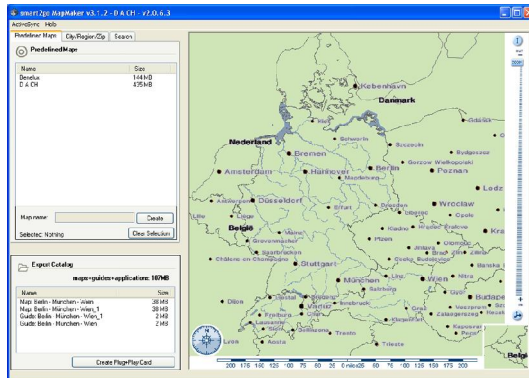
This guide will lead you through the steps to:

- 1. DEFINE AN AREA OR A ROUTE** **26**
- 2. CREATE A MAP** **30**
- 3. EXPORT A ROUTE OR A MAP** **31**

- Place the supplied CD in the CD-ROM slot of your Computer.
- The MyGuide installer will pop up automatically and guide you through the installation process. Please follow the instructions.



- After you have installed the software, start the program by double clicking the **MyGuide icon** on your Desktop. The Main Screen will appear:



There are three tabs across the top left of the screen:

Predefined Maps shows a listing of the major regions provided with the CD.

City/Region/Post shows drop down text boxes that permit you to enter the name of the City or State in which you are interested.

Search provides a search tool for locating an exact address or to look for special Points of Interest (POIs).

Both the City/State and the Search text boxes have a 'type ahead' feature. Simply enter the first few letters of the city, state or street name you are seeking and note the options that are displayed.

1. DEFINE AN AREA OR A ROUTE

Define an area

To define an area, you first select the correct region of the country. By way of example, let's assume you are travelling to London and want a map of the London metro area. Follow these steps:

- Select the **Predefined maps** tab.
- Select the **United Kingdom** region.
- Select the **City/Region/Post** tab.
- In the City/Region/Post text box, type in 'lond' (always at least three characters).

You will note that numerous choices are presented.

- If you are not certain which you want, type in the name of the state or the postal code in the state text box.

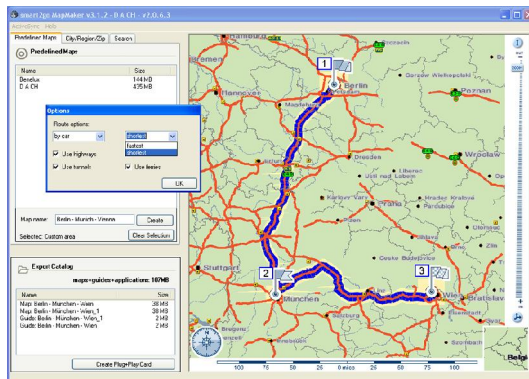
London appears and the map now centres itself on the London city area. The selected area will be highlighted.

- If you are looking for a city starting with an abbreviation please type in the second name. (e.g. type in 'sankt' for St. Gallen)
- To define your own custom area, simply select the **Clear Selection** button. Then use the mouse and the right mouse button to define a new area. Do this by placing the cursor at one corner of an area you wish to define, hold down the right mouse button and drag the mouse to create the new area.

Define a route

To define a route, first follow the steps above to centre the map on the desired area, then:

- Select a start point by placing the cursor on the desired place on the map.
- Use the right mouse button to display the routing menu.
- Select the start point by clicking **Add Waypoint**.
- Select the next waypoint by moving the cursor to the desired destination and selecting again **Add Waypoint**.
- To delete a waypoint select it by right click and press **Remove Waypoint**.
- **Hint:** Use the search functions to centre the map on your desired destination.



Once you define both a start point and a destination, the route will appear on the map and the area immediately surrounding the route will be highlighted.

- At any time that you wish to begin again, the **Clear Selection** button will clear the selected areas. Right click on a route and select **Clear route** to clear a route.

Route Options

There are **Route options** in the routing menu (right mouse click on the map). You may choose among the following settings:

- Pedestrian/Car
 - Fastest/Shortest
 - Allow or avoid toll roads, highways, ferries and tunnels
- Confirm your settings with **OK**.

Map Viewing Options

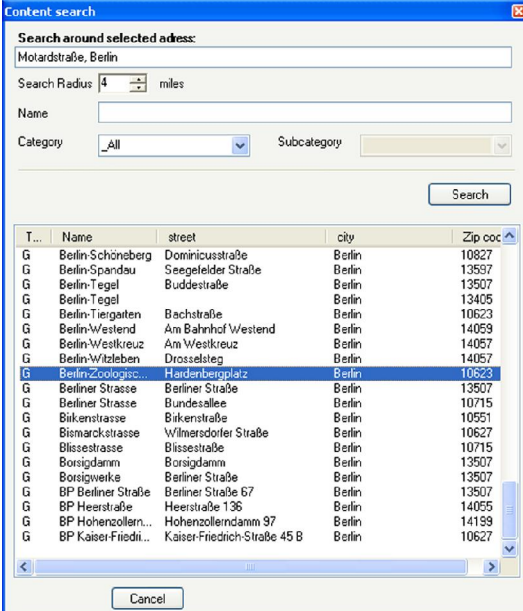
With the following functions you may adjust your map view:

- You can zoom in or out using the **Zoom** bar to the right of the screen.
- To pan the map hold the left mouse key and move the mouse in any direction.
- The map can be rotated 360 degrees by clicking and holding the **Compass** rose in the lower left part of the map window. A double click on the **Compass** rose will align the map to indicate North toward the top.
- The map view can be toggled between 2D and 3D by clicking on the **2D/3D button** below the zoom bar.
- By clicking on the **i button** in the upper right of the map screen, you can define the point-of-interest categories that will be displayed on the map.
- By clicking on the **distance legend** at the bottom of the map screen, you can toggle on and off distance markers.

Content Search Options

You can search for specific content (e.g. a restaurant nearby or a specific hotel):

- Position the map to the location where you want to perform your search and right click on your mouse button.
- Click on **Content search** and the content search window opens.
- Type in the **Name** of the place you are looking for and define **Search Radius** and search **Category**.
- Confirm with **Search**.



Content search

Search around selected address:
Motardstraße, Berlin

Search Radius: 4 miles

Name:

Category: Subcategory:

T...	Name	street	city	Zip code
G	Berlin-Schöneberg	Dominicusstraße	Berlin	10827
G	Berlin-Spandau	Seefeldler Straße	Berlin	13597
G	Berlin-Tegel	Buddestraße	Berlin	13507
G	Berlin-Tegel	Bachstraße	Berlin	13405
G	Berlin-Tiergarten	Bachstraße	Berlin	10623
G	Berlin-Westend	Am Bahnhof Westend	Berlin	14059
G	Berlin-Westkreuz	Am Westkreuz	Berlin	14057
G	Berlin-Witzleben	Drosselsteg	Berlin	14057
G	Berlin-Zoologisc...	Hardenbergplatz	Berlin	10623
G	Berliner Strasse	Berliner Straße	Berlin	13507
G	Berliner Strasse	Bundesallee	Berlin	10715
G	Birkenstrasse	Birkenstraße	Berlin	10551
G	Bismarckstrasse	Wilmerdorfer Straße	Berlin	10627
G	Blissestrasse	Blissestraße	Berlin	10715
G	Borsigdam	Borsigdam	Berlin	13507
G	Borsigweika	Berliner Straße	Berlin	13507
G	BP Berliner Straße	Berliner Straße 67	Berlin	13507
G	BP Heerstraße	Heerstraße 136	Berlin	14055
G	BP Hohenzollern...	Hohenzollernndamm 97	Berlin	14199
G	BP Kaiser-Friedri...	Kaiser-Friedrich-Straße 45 B	Berlin	10627

- By clicking on the individual entry the map is moved to the specific location.

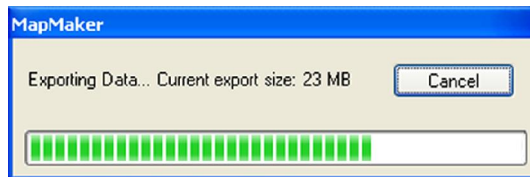
2. CREATE A MAP

Now that you have defined either an area or a route, it is time to create the map. In this process, MyGuide prepares the files necessary for your handheld device to display the maps. All of the available directory information, known as Points of Interest, will also be exported at this time.

- After having defined a route or a map simply type a name in the **Map name** box.

The default name is 'Custom area'. Whatever you type in this box will be the name of the map displayed on your handheld under the **Regions** menu selection. It is good practice to give your map a recognisable name.

- Once you have named your map or route, select the **Create** button.



The map creation process involves very large amounts of data, so depending on the speed of your computer, this process may take some considerable time. A progress bar will indicate the ongoing process. After successful map creation, the new map file is visible in the export catalogue which is located at the lower left hand portion of your screen.

3. EXPORT A ROUTE OR A MAP

The **Export Catalogue** shows the exported maps (with the names that you created earlier) plus any associated city guide data that will be copied onto your memory card.

- To export maps to a memory card, first insert a memory card into the memory card slot on your computer. If your computer is not equipped with a memory card reader or you do not have an external card reader, you may also connect your device via the ActiveSync software to your computer.
- To use the card reader, simply insert its USB plug into any USB port on your computer.
- Windows will display a pop up, usually on the lower right hand side of your screen, indicating that a new device has been found and is ready to use. Dismiss this pop up by clicking on it as indicated.

It is very important that the memory card that you use be properly formatted. MyGuide requires the memory card to be formatted FAT and **not FAT32**.

- To format the card, open the **My Computer** icon from your desktop.
- Right click on the drive icon that corresponds to the memory card reader, and select **Format**.
- Select **FAT** and then enter a name for the card, if you wish.
- **Select Start**.

You should consult the manual that came with your operating system if you are unsure of format process.

- Select the **Create Plug+Play Card** button at the bottom of the Export catalogue window.

When the card has been created, you will see a pop up that advises you of this fact. You are now ready to insert the card into your handheld device.

Please insert the SD/MMC card into your device. You will be asked for copying the image of SD/MMC card. Please confirm this message and wait until the process is done.

Hint:

- If you want to delete exported maps from the export catalogue, simply select the map you wish to delete and click on the right mouse button.
- You may elect to delete the selected map (**Delete map**) or all maps (**Clear all**) in the export folder.

IV. FREQUENTLY ASKED QUESTIONS

I can't find an address.

Please make sure you have correctly spelled your entry. If you do not know how an address is spelled correctly, simply enter the parts of the address, you know for sure (e.g. "Lond", "Leic" for Leicester Square in London). Then browse in the result list and look for the address. Also make sure that the city in which you are looking for an address is correct. Sometimes the official postal address differs from the address you are looking for. In that case, search for an address nearby that you know of and browse on the map.

If you find the address on the map but you can not find it while searching for it, please let us know via

service@myguidegps.com

There is a failure in the map / POIs are missing.

If you detect an error in the map data (e.g. a street is missing completely), we would like to inform our map data provider.

Please let us know at service@myguidegps.com

I have problems to get a GPS fix.

If you have problems getting a satellite fix with the GPS (you can see how many satellites are being received on the main menu at the bottom left) please make sure, that you are outside and the GPS antenna has a good visibility to the open sky. Some models also do support an additional external active antenna. Please also consult with the hardware manual of your device to get further information of how to obtain a GPS fix.

Where can I get technical support?

Please contact the manufacturer or your retail store.

Where can I get software updates?

Please contact the manufacturer or your retail store for information about software updates.

Where can I get additional maps and guides?

Please visit the download shop of MyGuide (HK) Limited at www.myguidegps.com .