

Imprint

The information and data contained in this document are subject to change without prior notification. The names and data used in the examples are imaginary, if not stated otherwise. No part of this document may be reproduced or transmitted for any use, in any form or by any means, electronically or mechanically without the prior written permission of MAP&GUIDE GmbH.

© 2005 MAP&GUIDE GmbH, Karlsruhe; NAVTEQ B.V., NL; AND International Publishers N.V., NL

Warranty Restrictions

No responsibility is assumed for the accuracy of the contents of this user guide. Notes on errors will be gratefully received at any time. Please note the following regional limitations:

France: "Source: Géoroute® IGN France & BD Carto® IGN France"

Germany: "Die Grundlagendaten wurden mit Genehmigung der zuständigen Behörden"

Great Britain: "Based on Ordnance Survey electronic data and used with permission of the Controller of Her Majesty's Stationery Office © Crown Copyright, 1995."

Italy: "La Banca Dati Italiana è stata prodotta usando quale riferimento anche cartografia numerica ed al tratto prodotta e fornita dalla Regione Toscana."

Norway: "Copyright © 2000; Norwegian Mapping Agency"

Portugal: "IgeoE - Portugal"

Spain: "Información geográfica propiedad del CNIG"

Sweden: "Based upon electronic data © National Land Survey Sweden."

Switzerland: "Topografische Grundlage: © Bundesamt für Landestopographie."

All brand or product names mentioned are trademarks or registered trademarks of the corresponding companies or organisations.

Service & Support

MAP&GUIDE GmbH support is available to all registered customers. It can provide assistance for any problems related to the software which may arise.

In order to use this service, please register by completing the service card provided and returning it to MAP&GUIDE GmbH. Alternatively you can use the online registration option which is quick and convenient. You will find help for many problems in the comprehensive online help or in the user's guide provided. Experience shows that most questions can be quickly answered by consulting the user's guide. The online database on our website (www.mapandguide.info) also offers a lot of assistance for frequently asked questions. Of course if you are unable to find the relevant information, then you can take advantage of our e-mail service as well as our service line to immediately obtain the answers to your questions.

IMPORTANT: Before ringing the service line, always verify which software and hardware your system is fitted with. Having this information to hand will mean the your conversation with our service line employees will be significantly shorter, more productive and more successful.

Service Line

Tel.: 0905 8019250 (1,50 GBP/min)

You can contact the service line at the following times:

Mon 8 am - 12 pm

Wed 3 pm - 7 pm

Fri 8 am - 12 pm



Structure

1	Welcome!.....	1
2	Installation of FALK NAVIGATOR	3
3	Quick Introduction to FALK NAVIGATOR	7
4	General Information about FALK NAVIGATOR PDA.....	11
5	Selecting a Destination	19
6	Navigation.....	27
7	Route Planner	37
8	Search for Next	45
9	Settings.....	47
10	FALK NAVIGATOR Desktop	55
	Glossary.....	81
	Licensing Agreement	83
	Index	89





Contents

1	Welcome!.....	1
	1.1 Safety Advice	1
2	Installation of FALK NAVIGATOR	3
	2.1 Requirements	3
	2.2 Installing FALK NAVIGATOR on a PC	4
	2.3 Installing FALK NAVIGATOR on a PDA	4
	2.4 Installing a Map	4
	Changing Maps.....	5
	2.5 The GPS Receiver	5
3	Quick Introduction to FALK NAVIGATOR	7
	3.1 Your First Journey	7
4	General Information about FALK NAVIGATOR PDA.....	11
	4.1 Opening FALK NAVIGATOR on a PDA.....	11
	4.2 How to Use FALK NAVIGATOR	12
	4.3 Using the Map	13
	4.4 2D view, 3D view or Junction view?.....	14
	The 2D Map View	14
	The 3D Map View	16
	The Junction View.....	17
5	Selecting a Destination	19
	5.1 Entering the Town and the Address of the Destination.....	20
	5.2 Selecting a Point on the Map as the Destination.....	21
	5.3 Selecting an Address as the Destination.	22
	5.4 Selecting a Favourite as the Destination	23
	5.5 Selecting one of the Previous Destinations as the New	



	Destination.	24
5.6	Selecting a Destination Near to an Address.	25
6	Navigation.	27
6.1	Entering Destinations	27
	Adding a Destination	27
6.2	Editing the List of Stop-Off Points.	27
	Adding a Destination to the List of Favourites	28
	Positioning the Destination in the Stop-Off Point List	28
	Deleting a Destination	29
	Optimising Navigation	29
6.3	Countrywide Navigation.	30
	Exception: The point of departure lies within the area of the total map 30	
6.4	The Navigation Screen	31
6.5	More Settings	33
	Adding the Current Position to the Favourites List	33
	Displaying the Itinerary for the Calculated Route	33
	Switching Between Day/Night Mode Manually.	34
	Switching Voice Alert On/Off	34
	Recalculating the Route	35
	Avoiding Roads in Advance	35
	Map View: 2D or 3D?	35
	Exiting Navigation	35
	Back to Navigation	35
7	Route Planner	37
7.1	Entering Destinations	37
	Adding a Destination	37
7.2	Editing the List of Stop-Off Points.	37
	Adding a Destination to the List of Favourites	38
	Positioning the Destination in the Stop-Off Point List	38
	Deleting a Destination	39
	Optimising Route Planning.	39
7.3	Route Planner Screen.	40

7.4	More Settings	41
	Adding the Current Position to the Favourites List	42
	Displaying the Itinerary for the Calculated Route	42
	Switching Between Day/Night Mode Manually	43
	Switching Voice Alert On/Off	43
	Recalculating the Route	43
	Avoiding Road in Advance	43
	Ending the Simulation	44
	Back to Navigation	44
8	Search for Next	45
9	Settings	47
9.1	GPS Tab	47
9.2	Map Tab	48
9.3	Navigation Tab	49
9.4	Sound Tab	50
9.5	Route Tab	51
9.6	Home Address Tab	52
9.7	System and Version Tabs	53
10	FALK NAVIGATOR Desktop	55
10.1	The Program Window	55
	The Title Bar	56
	The Menu Bar	56
	The Main Menu	56
10.2	Installing the Software on the PDA	57
10.3	Load Map and Addresses onto PDA	58
	Switching the Memory Card	62
10.4	Create New Map	63
	Selecting Towns and Personalised Sections	63
10.5	Route Planner	67
	List of Stop-Off Points Tab	68
	Saving a Stop-Off Point List	74
	Load List of Stop-Off Points	74



	Itinerary Tab.....	75
10.6	Outlook Addresses.....	75
	Creating or Changing Addresses	76
	Synchronising Addresses with Outlook.....	77
10.7	Data Sets on the Internet.....	79

1 Welcome!

Congratulations on purchasing FALK NAVIGATOR - the complete navigation package for use on Personal Digital Assistants (PDA) with Microsoft® Windows Pocket PC 2002 or Windows Mobile 2003. FALK NAVIGATOR is made up of perfectly matched components and its audio and visual driving instructions will ensure that you reach your destination safely and without stress.

In addition, FALK NAVIGATOR has been perfectly tailored for use in a company. With this software, you can integrate your Outlook data records so that they can be used as navigation destinations. The program also works perfectly with Falk data such as hotels, restaurants etc.

This user's guide explains step by step how to use the FALK NAVIGATOR software. You can setup the PC functions by using the CD-ROM included in this package.

Enjoy using our product and we wish you a safe trip.

1.1 Safety Advice

For your own safety you should attach your PDA securely in the vehicle using a special holder.

Make sure the device is sufficiently secure so that it will not become dislodged even in the event of emergency braking or a collision. Ensure that the holding device does not hinder the effectiveness of passenger safety systems (seat belt, airbag, etc.) in any way.

The road traffic regulations always have priority over the instructions given by FALK NAVIGATOR.

Avoid using the PDA while driving as much as possible, or leave the PDA operation to your passenger.

You should only make settings and select the destination when your vehicle is stationary.

You can use the road map and the junction view to get a quick overview of position and route. Alternatively you can let your passenger navigate you through the traffic with the PDA.

FALK NAVIGATOR has been developed, tested and produced with the greatest of care and in line with current safety guidelines.



Nevertheless, not every theoretically possible operational error and malfunction occurring in everyday use or in use with the GPS receiver can be ruled out.

Bear the following in mind therefore:

- When placing your GPS receiver inside a vehicle, ensure that neither the receiver, the connecting cable nor the laptop interfere in any way with the proper functioning of passenger security systems (seat belt, airbag). Keep the area in front of and over the airbag free from all objects!
- While driving concentrate on the road only and only enter data when the vehicle is stationary!
- Only follow the directions of FALK NAVIGATOR if the rules of road permit you to. FALK NAVIGATOR will also guide you safely to your destination even if you leave the suggested route.
- If your GPS receiver is magnetically attached to the roof of the vehicle, then do not travel faster than 100 km/h (62 mph). Check the magnetic securing device at regular intervals, even when travelling at low speeds because the GPS receiver could become dislodged or detached!

2 Installation of FALK NAVIGATOR

2.1 Requirements

The following specifications are required for the PDA functions:

- A standard Pocket PC with Microsoft® Windows Pocket PC 2002 or Windows Mobile 2003 as the operating system (HP iPAQ 1930 and ACER N10 are currently not supported)
- Minimum 32 MB RAM with at least 10 MB free (after the program installation)
- Depending on the map data being used, up to 512 MB free space on the memory card of the PDA. CompactFlash or SD-Card memory cards are recommended.

The following specifications are required for the PC functions:

- Pentium processor 233 MHz or higher. Pentium 3 with at least 500 MHz is recommended
- Graphics card with a minimum resolution of 800 x 600 pixels as well as TrueColor or HighColor mode
- Microsoft compatible mouse / trackball / touchpad
- RAM: at least 128 MB RAM
- Hard disk space: at least 1.5 GB (individual country map), 2.5 GB for the Central Europe map
- CD-ROM Drive
- Microsoft® Windows 98, ME, XP, Windows 2000, Windows NT 4.0 Service Pack 5 or higher
- Sound card
- Microsoft®ActiveSync® software version 3.5 or higher, 3.7.1 recommended. This software is supplied with the PDA and is used to synchronise data with the PC. You will find out how to install ActiveSync® in the user documentation of your PDA.

Note: In order to exchange files between FALK NAVIGATOR and your PDA, you must activate the synchronisation mode in the ActiveSync program.

1. Switch to the **ActiveSync®** program.



2. In the **Tools** menu, select the **Options** command or click on the **Options** button.
3. In the **Sync Options** tab, choose the options that you want to synchronise.
4. Confirm with **OK**.

2.2 Installing FALK NAVIGATOR on a PC

Make sure that Microsoft® ActiveSync® has been installed.

1. Insert the FALK NAVIGATOR CD in your CD-ROM drive.

The installation program should start automatically.

Note: If this is not the case, start the program by double-clicking on the file **setup.exe** in Windows Explorer.

2. **Select target:** Here the installation program suggests a destination path.
3. If you don't want to change the suggested path then confirm the entry by clicking **Next**.

After you have specified an installation folder, all the files for FALK NAVIGATOR will be copied to your hard drive.

FALK NAVIGATOR then creates a program group which you can conveniently open from the Windows start menu. The group contains the FALK NAVIGATOR application as well as an uninstall program.

2.3 Installing FALK NAVIGATOR on a PDA

If you purchased FALK NAVIGATOR as a part of package with a PDA, the software will usually be preinstalled which means you can start straight away.

Otherwise the FALK NAVIGATOR navigation program will be installed on your computer when the desktop application is run for the first time. The installation is described in Chapter 10.2.

2.4 Installing a Map

With FALK NAVIGATOR you can access a comprehensive choice of maps for various countries and also Europe. The maps are very up to date and contain detailed map material, some of which is house-number accurate. The maps are based on the same material which is used in fixed built-in navigation systems.

1. Insert the FALK NAVIGATOR maps CD into your CD-ROM drive.

The installation program should start automatically.

Note: If this is not the case, start the program by double-clicking on the file **setup.exe** in Windows Explorer.

2. The installation program automatically recognises which folder the application was installed in and by default suggests the same folder for the maps.

Tip: Next, fill out the registration form and return it to us. You will then be able to use our telephone support and we can also keep you up to date on the latest products and updates.

FALK NAVIGATOR is now ready to use and can guide you to your first destination.

Changing Maps

After the additional maps have been installed, FALK NAVIGATOR creates a new menu entry which you can use to **browse...** between the installed maps (Change map).

Note: The new entry **Browse...** will be available once FALK NAVIGATOR has been restarted.

1. Start FALK NAVIGATOR again.
 2. Click on the menu entry **Maps > Browse....**
You can now switch between all the installed maps.
 3. Select the desired map.
- You can now use the selected map.

2.5 The GPS Receiver

A GPS receiver localises the current position of your vehicle. The GPS receiver continuously receives signals from the 24 US NavStar satellites orbiting the Earth. The current position of the vehicle is determined from the data of at least three satellites. FALK NAVIGATOR displays your position on the map with an accuracy usually more precise than ten metres.

Please understand that we are unable to offer telephone support on the topic of installing the GPS receiver.



3 Quick Introduction to FALK NAVIGATOR

FALK NAVIGATOR has been designed so that it is easy to use but also practical at the same time. Therefore you will notice various common aspects within FALK NAVIGATOR:

- All dialog screens required for navigation and which may possibly have to be read during the journey (by a passenger), contain large buttons and large text. This makes it easy to tap buttons and enter the correct information. Furthermore, thanks to the large on-screen keyboard, it is now possible to type in a destination using the PDA pen.
- Dialog screens such as settings windows, contain buttons, entry fields and text of a standard size. Only change the settings in these windows if the vehicle is stationary or when you are at home.

Note: For your own safety, avoid using the PDA while driving as much as possible, or leave the PDA operation to your passenger.

3.1 Your First Journey

It is likely that you will first want to find out how to navigate to your destination with FALK NAVIGATOR while driving, before we explain FALK NAVIGATOR's individual functions.

1. First connect the GPS receiver to the PDA.
2. Make sure that the PDA is securely fastened in the vehicle.
3. Plug the power cord of the GPS receiver into the vehicle's cigarette lighter socket.

Tip: Some cars have more than one of these sockets. You can use any 12 volt socket for FALK NAVIGATOR.

4. Next activate the GPS receiver, if you have not already done so.
Your GPS receiver will start to locate your position as soon as it is turned on. It will search for position data from at least three satellites.



Note: The first time you use your GPS receiver it can take between 2 and 15 minutes to pinpoint your location. The system then saves your position and the next time you use the receiver it will take one to three minutes to locate your position. However you don't have to wait before you start FALK NAVIGATOR - the program will begin navigation as soon as your position has been confirmed.

5. Start FALK NAVIGATOR by clicking on the appropriate icon or by selecting the FALK NAVIGATOR entry in the start menu on the PDA.
The FALK NAVIGATOR main menu is displayed

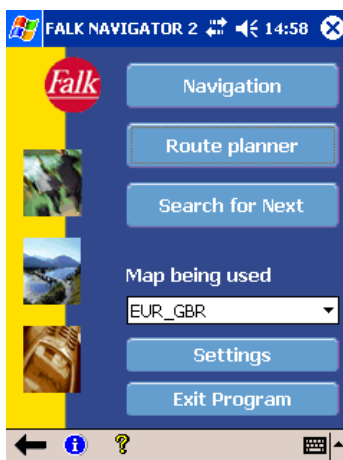


Fig. 1: The FALK NAVIGATOR main menu

6. Tap the **Navigation** button.
The screen for choosing the desired destinations (stop-off points) opens. The current GPS position is automatically entered here as the point of departure.
7. Tap the **Add stop-off point** button.
The stop-off point selection screen opens.
8. Enter the desired destination address and confirm your entry by pressing **Apply**.

FALK NAVIGATOR contains many special destinations such as restaurants, hotels and orientation points e.g. churches, monuments and petrol stations. All these places can also be chosen as destinations, as can your own addresses.

9. Tap the **Start Navigation** button.

FALK NAVIGATOR then calculates the route to the destination and starts the driving instructions.

Note: You will find details on further functions for selecting a destination in the following chapters, which cover all aspects of navigation with the PDA.

Now you can start driving and FALK NAVIGATOR will ensure you reach your destination safely and without stress.

Note: Please note the safety advice in 1.1.



4 General Information about FALK NAVIGATOR PDA

4.1 Opening FALK NAVIGATOR on a PDA

Once installation is complete you can open FALK NAVIGATOR immediately via the start menu.

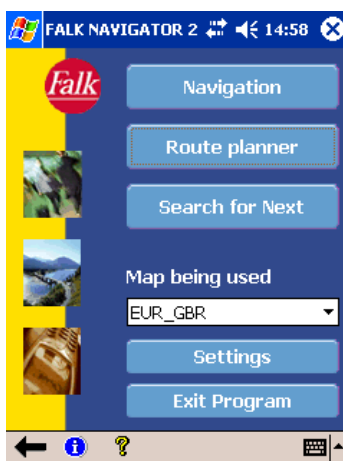


Fig. 2: Main menu

Here you can start **Navigation**, open **Route Planner** or perform a **Search for Next** for nearby addresses or sights.

You will find a description of

- **Navigation** in chapter 6,
 - **Route Planner** in chapter 7,
- Navigation** and **Route Planner** are basically structured in the same way. With the **Navigation** function the point of departure is always automatically set as the current GPS position, whereas with **Route Planner** you can manually enter the point of departure (as well as the destination).



- **Search for Next** in chapter 8,
The **Search for Next** uses address details to find the nearest restaurants, hotels or petrol stations.
The choice of possibilities depends entirely on the available data records, which can be almost infinitely extended using FALK NAVIGATOR Desktop.
- **Settings** in chapter 9.

Tip: If you are navigating with FALK NAVIGATOR for the first time, we recommend that you first configure the **settings** in line with your requirements. This is particularly relevant for GPS settings.





- In the main menu you specify which **map** you want to work with.

4.2 How to Use FALK NAVIGATOR

- The following notes apply to all dialog boxes and windows shown on the PDA.
 - Blue buttons are input keys and are therefore important for subsequent steps.
 - Buttons that have already been pressed and/or do not require any further attention are shown in grey.
 - Buttons which are no longer relevant to entering a destination are hidden on the on-screen keyboard.
 - If buttons should or have to be used during the journey, they are displayed in a large size and in colour. All other buttons should only be used when the vehicle is stationary.

Note: For your own safety, avoid using the PDA while driving as much as possible, or leave the PDA operation to your passenger.

- To return to the previous view, tap the arrow in the bar at the bottom of the screen ←.
- To view the help on the PDA, tap the yellow question mark in the area at the bottom of the screen ?.
- You have to confirm your entries in order for them to become effective, such as when you select destinations for example. In the area at the bottom of the screen, you will then see the buttons **Apply** and **Cancel**.
 - Tap **Apply** if you want to use the displayed result (e.g. the selected destination).

- Tap **Cancel** if you want to return to the previous screen without making any changes.
- There are several ways of scrolling through the entries in a list: You can use the buttons in the area at the bottom of the screen:
 - You can search the list using the scroll bar,
 - You can move one page (five entries) backwards through the list using the  button,
 - You can move to the entry below the current one by pressing .
 - You can move to the entry above the current one by pressing .
 - You can move one page (five entries) forwards through the list using the  button,

4.3 Using the Map

FALK NAVIGATOR contains a highly detailed map that you can use for many different tasks.

In addition to roads and towns, the map also shows rail lines, forests, urban areas, rivers and seas. Tourist sights and your own personal addresses are of course also included on the map.

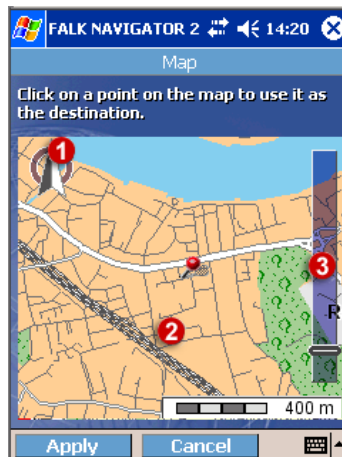


Fig. 3: Map in Falk Navigator, e.g. the map in the destination selection screen

The map provides you with three ways of changing the section shown:

- 1 Compass for rotating the map



In some views there is also a compass which you can also use to turn the map.

Note: The map is displayed with north facing upwards by default.

Sometimes it is more practical to turn the map, for example when navigating. To do this, tap the compass with the pen and then turn the map on the screen. The entire screen is available to you when you are doing this.

Tip: Give the compass a quick tap to restore the "map facing north" setting.

2

Tap, drag and release in the map area to move a map section around

If you tap the map and move the pen, the map follows the movement of the pen and is moved to a new position. The scale remains the same. When you lift the stylus from the screen, the map is completely redrawn.

3

Slider for freely adjusting the magnification of the map section

With the slider you can change the section and the map scale freely from the highest to the lowest zoom factor. The closer you move the slider to the bottom of the screen, the higher the zoom factor of the current section.

Note: As the displayed map section get smaller (country - regions - towns - residential streets), more details are displayed.

4.4 2D view, 3D view or Junction view?

It is a matter of personal preference whether you choose to use the 2D, 3D or the junction view for navigation.

Note: To switch between the 2D, 3D and junction view whilst driving, tap the map twice.

The 2D Map View

The map is constantly updated with the GPS signal. Using these signals FALK NAVIGATOR shows your current location on the map. This view is therefore probably better suited to passengers.

- The current GPS position is indicated on the 2D map view by a red circle. Your direction of travel is represented by an arrow on this circle. The arrow is generally in the middle of the screen, while the map moves underneath.

- The course of the route is highlighted in blue on the map. In this way, you can easily see whether you are still on course.
- If you have missed a junction, don't worry. FALK NAVIGATOR will calculate a new route in a matter of seconds. You will definitely reach your destination.

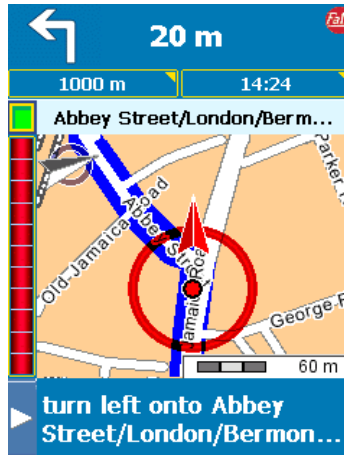


Fig. 4: 2D map view

You can change the size of the map section incrementally using your PDA's scroll button.

- If you want to enlarge the map section, keep pressing your PDA's scroll button downwards until you reach the desired zoom level.
- If you want to reduce the map section, keep pressing your PDA's scroll button upwards until you reach the desired zoom level.
- If you want to set the default map section size, press the scroll button to the left or right.

Note: The default size of the map section depends on the current speed.

The 3D Map View

The 3D map view is constantly updated using the GPS signal and always shows you your current position. A combined view of arrows and map sections enhances navigation on your PDA.

- In the 3D map view, your current GPS position is indicated by a triangle.
- The course of the route is highlighted in blue on the map. The triangle symbol indicates the direction of travel. A green arrow shows you the junctions at which you must turn-off.

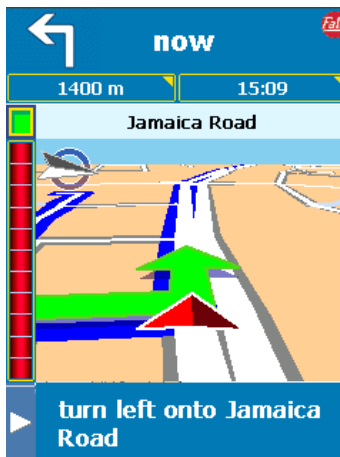


Fig. 5: 3D map view

The Junction View

The junction view shows you a diagram of the next junction. This makes navigation easier as you only need to take your eyes off the road for a second.



Fig. 6: junction view



5 Selecting a Destination

In order to be able to navigate with the PDA or to plan a route, you first of all have to enter a destination and then calculate the route.

1. In the FALK NAVIGATOR main menu, click on either **Navigation** or **Route Planner**.

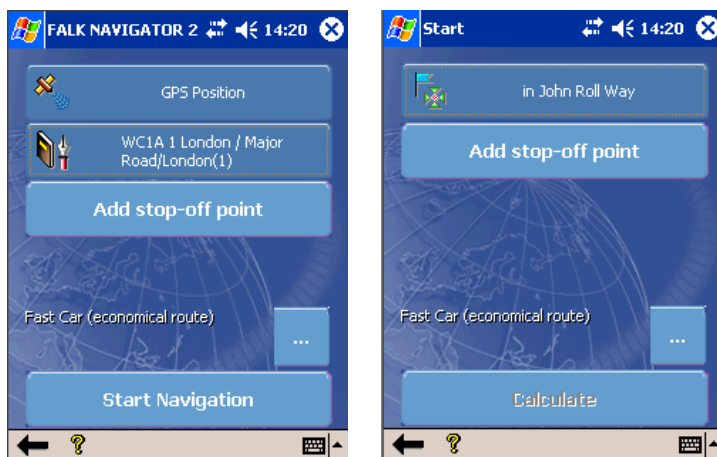


Fig. 7: Left: Stop-off point list in Navigation. Right: Stop-off point list in Route Planning.

Note: In Navigation the point of departure is always entered automatically and cannot be changed.

2. Tap **Add stop-off point** in the list of stop-off points in Navigation or Route Planning.

The select destination window opens.

Note: The button on the upper edge of the screen is preset to **location and street name** when the select destination window opens. Tap the button to open the list containing all destination entries. As long as FALK NAVIGATOR is active, the button will always display the previously selected entry (e.g. **map**).

Read the following sections to find out about the different ways of specifying a destination.

5.1


Entering the Town and the Address of the Destination.

1. Tap the button in the upper area of the screen and choose the option **Enter the location and street name.**

*The button on the upper edge of the screen displays the text **Enter location and street name** when the select destination window opens. In the lower area of the screen there is an on-screen keyboard available, which you can use to enter the postcode, location and address.*

Note: The input field for the address is only displayed after you have selected a location.

When a destination is being entered, the buttons which are no longer relevant are hidden on the on-screen keyboard.

Note: The normal system keyboard is also still available. To switch to the system keyboard, tap the keyboard button . When the system keyboard is opened, it covers the on-screen keyboard.

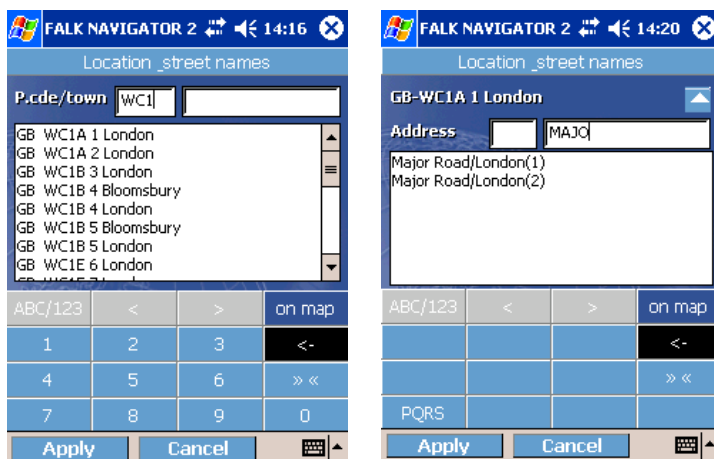


Fig. 8: Left: location selection. Right: entry field after the location selection

2. In order to specify the destination, enter the town or the postcode in the appropriate boxes.

Note: FALK NAVIGATOR changes the buttons on the on-screen keyboard according to the selected entry. You also switch between keyboards manually using the **[ABC/123]** button.

*Before you even finish typing your entry, the **Location result** list opens with the results of the search.*

Tip: If you want to view the various districts belonging to a town, then enter the / character (Shift + 7) after the name of the town (e.g. "London/").

3. Now tap the desired town in the list.

The chosen location is entered in the box. The box for entering the address now becomes available.

Tip: If you then want to know exactly where the destination is, tap the **on map** button. In chapter 5.2 you will find a description of how you can select the destination on the map.

4. Enter the name of the street and the house number.

*FALK NAVIGATOR looks for streets as you type and displays them in the **Street result** list.*

5. Choose the desired street from the list.

The selected street is entered in the box.

6. Tap **Apply**.

The destination is added to the list of stop-off points.

Note: If you only enter a town and don't enter a street, the centre of the town in question is used as the destination. Depending on the map you are using, some streets may not have house numbers. In this case, the middle of the street is used as the destination.

5.2 Selecting a Point on the Map as the Destination

1. Tap the button in the upper area of the screen and choose the **Map** entry.

*The button on the upper edge of the screen displays the entry **map**. You will see the map in the lower area of the screen.*

Tip: A description of how to use the map can be found in chapter 4.3.

2. Select the desired destination by tapping the map.

The destination is displayed on the map with the appropriate symbol.

Tip: If necessary, you can adjust the map section using the slider so you can see the destination in more detail.

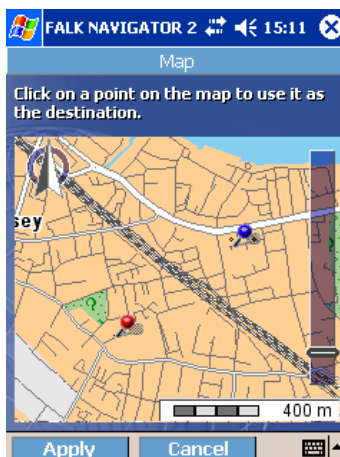


Fig. 9: Select on the map

3. If you want to move the destination, simply tap the map and move the map to the desired position with the pen.
4. Click **Apply**.

The destination is entered as a click-point in the list of stop-off points.

5.3 Selecting an Address as the Destination.

1. Tap the button in the upper area of the screen and choose the option **Addresses**.

*The button on the upper edge of the screen displays the entry **Addresses**. In the lower area of the screen there is an on-screen keyboard available, which you can use to enter the postcode, location and address.*

2. Select the table that contains the address.

Note: This pre-selection is necessary because FALK NAVIGATOR can manage many data sets and the number of results could be very large.

3. In order to specify the destination, enter the town, the postcode or the address in the appropriate boxes.

As you type, FALK NAVIGATOR looks for your entry and lists the addresses found.

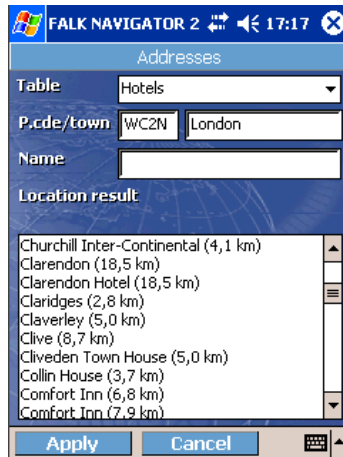


Fig. 10: Select from addresses

4. Tap the desired address in the list of results.

The selected address is entered in the box.

5. Click **Apply**.

The address is added to the stop-off point list as the destination.

5.4 Selecting a Favourite as the Destination

You can save your home address and up to 50 other destinations as favourites in FALK NAVIGATOR. These destinations can be streets, addresses or click-points, and are available at any time without needing to enter them again.

1. Tap the button in the upper area of the screen and choose the option **Favourites**.

*The button on the upper edge of the screen then displays the entry **Favourites**. The middle section of the screen will then contain a list with all your favourites.*

Tip: There are two methods of organising the stop-off point list: Further information can be found in chapter 4.2.

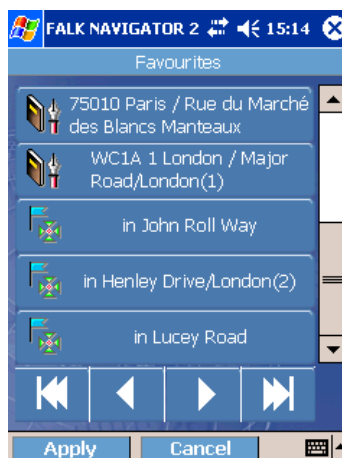


Fig. 11: Select from favourites

2. Tap the desired entry in the list of favourites.

Tip: If you leave the stylus on an entry for a moment, a menu opens and you can **delete** the entry, **edit** it or have it **shown on the map**.

3. Tap **Apply**.

The favourite is entered as the destination in the list of stop-off points.

5.5 Selecting one of the Previous Destinations as the New Destination.

FALK NAVIGATOR saves the previous destinations so that you can access them quickly without having to search again.

1. Tap the button in the upper area of the screen and choose the option **Previous destinations**.

*The button on the upper edge of the screen then displays the text **Previous destinations**. The middle section of the screen then contains a list with all the previous destinations.*

Tip: There are various methods of searching through the list of previous destinations. Further information can be found in chapter 4.2.

2. Tap the desired entry in the list.

Tip: If you leave the stylus on an entry for a moment, a menu opens and you can **delete** the entry, **edit** it or have it **shown on the map**.



Fig. 12: Selecting a previous destination

3. Tap **Apply**.

The previous destination is added to the list of stop-off points as a new destination.

5.6 Selecting a Destination Near to an Address.

FALK NAVIGATOR allows you to select destinations near to a particular address. This is useful if, for example, you are in a town you don't know and you want to find a nearby restaurant.

1. Tap the button in the upper area of the screen and choose the option **Next addresses**.

*The button on the upper edge of the screen then displays the entry **nearest addresses**. The lower section of the screen will then contain buttons that you can use to start the radius search.*

2. If you want to enter a new address for the radius search, tap the button **Select an address** and enter the desired address as described in chapter 5.1.
3. Select a **table** from the list of available tables.
4. Choose a radius from the **Radius** selection list.

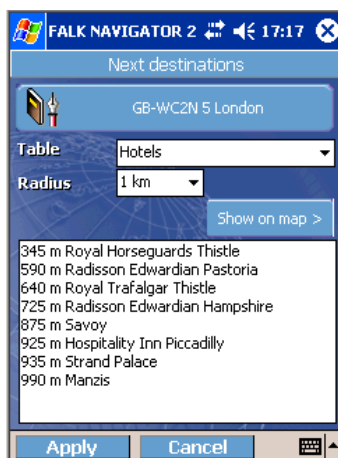


Fig. 13: Determining a new destination with a radius search

5. Choose a destination from the list.

6. Tap **Apply**.

The address is added to the stop-off point list as the destination.

6 Navigation

6.1 Entering Destinations

With Navigation you can enter the desired destinations and also specify how you want the route to be calculated. The current GPS position is always used as the point of departure.

Note: The GPS receiver must be connected and ready for operation. You will find further information in chapter 2.



Fig. 14: Entering a destination in the stop-off point list

Adding a Destination

1. In the main menu, tap **Navigation**.
2. Using the pen, tap the button **Add stop-off point**.

The select destination window opens. Here you can enter the desired route. Choose one or more destinations as described in chapter 5.

6.2 Editing the List of Stop-Off Points

Once you have selected a destination, you can **start navigation** or edit the stop-off point list.



Fig. 15: Editing the List of Stop-Off Points

Adding a Destination to the List of Favourites

1. Tap on the destination entry in the stop-off point list with the pen.
2. Leave the stylus on the destination entry for a few seconds.
A popup window with a selection list opens.
3. Choose the entry **Add to list of favourites**.

Your destination is then automatically added to the list of favourites and will be available the next time you select a destination. Further information on this topic can be found in chapter 5.4.

Positioning the Destination in the Stop-Off Point List

1. Tap on the destination entry in the stop-off point list with the pen.
2. Leave the stylus on the destination entry for a few seconds.
A popup window with a selection list opens. There are two methods of organising the stop-off point list:
 - **Move stop-off point up**
 - **Move stop-off point down**

The stop-off point is then moved according to the function you selected.

Deleting a Destination

1. Tap on the destination entry in the stop-off point list with the pen.
2. Leave the stylus on the destination entry for a few seconds.

A popup window with a selection list opens.

3. Choose the entry **Delete stop-off point**.

Your destination is then automatically deleted from the stop-off point list.

Note: The destination is however still available for destination selection under the entry **Previous destinations**.

Optimising Navigation

FALK NAVIGATOR offers you optimisation settings for navigation. These settings serve as the basis for calculating the route.

1. Tap the button  to open the optimisation settings.

Selecting a vehicle profile

Using the **Vehicle** button you can switch between the various types of vehicles and the entry "Pedestrian".

- **Fast Car**
A vehicle which, on average, can travel 120km/h or faster on motorways and up to 80km/h on trunk roads.
- **Slow Car**
A vehicle which, on average, can travel 100km/h on motorways and up to 70km/h on trunk roads.
- **Pedestrian**

Selecting the type of optimisation

Using the **Optimisation** button you can choose from three types of optimisation.

- **according to distance**
Takes you to your destination using the most direct route possible. Therefore you travel the minimum number of kilometres.
- **according to time**
This option involves taking roundabout routes via motorways/bypasses around cities, if a time advantage can be achieved.



- **economical route**

This finds a compromise between the first two alternatives. The reason for the compromise is that a time advantage, achieved by travelling at higher speeds, can sometimes result in higher petrol consumption. Therefore the economical route is a midpoint between the two extremes.

Tip: The **economical** route usually produces the best compromise between journey duration and route length.

Using/avoiding motorways

Using the **use/avoid motorways** button, you can decide whether or not FALK NAVIGATOR should use motorways during navigation.

Note: If the option avoid motorways is activated, then all motorways within a radius of approximately 100 km are avoided.

6.3 Countrywide Navigation

FALK NAVIGATOR provides you with a fully up-to-date city map of a central area. This includes highly detailed town plans and all roads and map objects - even for the smallest towns and villages. This means you can specify a stop-off point which is accurate down to street level or house number level.

The City map is also a total map containing a detailed interregional road network. A total map includes main roads, trunk roads and motorways.

The maps are based on the data of our partner NAVTEQ. Please note the copyright notes to this effect.

Exception: The point of departure lies within the area of the total map

If the point of departure for your route does not lie within the highly detailed area of the City map, but rather within the detailed interregional road network of a total map, then a specific starting procedure must be followed:

Follow the direction of flashing arrow in the corner of the screen until you reach a main road in the interregional road network. Navigation will then be carried out as normal with the usual map views.



Fig. 16: Navigation using a point of departure within the total map area.

6.4 The Navigation Screen

All the information you need for driving is provided clearly and comprehensively in the navigation screen.

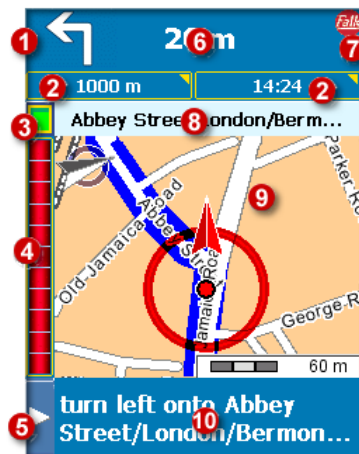


Fig. 17: Elements in the Navigation Screen

- 1 **Turn-off direction:** This arrow shows the direction in which you have to turn off at the next junction.

- 2 **Left and right status display:** The status displays can show one of the following pieces of information: distance to the next junction, distance to destination, arrival time, remaining driving time, speed, height above sea level.
You can specify which information is shown in the Settings. For more on this topic see chapter 9.3.
- 3 **GPS signal quality:** The quality of the GPS signal is shown using different colours. The colours mean the following:
Red – Insufficient signal quality, less than 3 satellites found.
Yellow - Sufficient signal quality, less than 5 satellites. Still not enough to determine height.
Green - Good signal quality, which also allows height to be calculated. At least 5 satellites found.
- 4 **Manoeuvre-countdown bar:** This bar visualises the distance to the next turn-off point. The shorter the bar, the closer the turn-off point. The bar only becomes active when the next junction is closer than 600 m within an urban area and closer than 3 km in suburban areas.
- 5 **Other functions:** The other functions in the toolbar such as day and night mode are described in chapter 6.5.
- 6 **Distance to the next junction:** This number informs you how far away you are from the next junction.
- 7 **Turn-off direction at the following junction:** This arrow shows the direction in which you have to turn off after the next junction. This piece of information is particularly useful if you are approaching a complicated junction which requires several manoeuvres.

Note: The turn-off direction at the following junction will only be displayed if you need to perform a further manoeuvre immediately after the next one.

- 8 **Name of the road after the next manoeuvre:** Name of the next road that you have to turn into. This road is shown directly above the junction or map view.
- 9 **Junction view or map view (2D/3D):** If you tap once within this area of the navigation screen, you can switch between the junction view and map view (2D/3D).
- 10 **Manoeuvre text:** The next driving instruction is shown here. If voice alert is active, then audio directions are also given.

6.5 More Settings

You can set additional settings for navigation.

Note: These functions give you a quick overview but are not really necessary for actual navigation. If you don't select a function, the menu automatically closes after four seconds and the navigation screen reopens.

1. Tap the arrow symbol in the bottom left corner.

The window containing further settings opens. The following functions are available here:

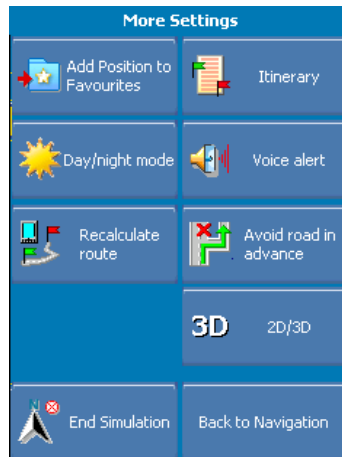


Fig. 18: More Settings

Adding the Current Position to the Favourites List

Select **Add Position to Favourites** if you want to include your current position in your list of favourites.

Displaying the Itinerary for the Calculated Route

To show the **itinerary** for the calculated route, tap the corresponding button.

Tip: The map section can be modified by using the scroll bar (to change the size) and the compass (to change the direction the map is facing). By tapping and dragging the screen, you can also adjust the map section without changing the scale.

- Browse through the itinerary by tapping the two buttons left and right of the current point on route. The next or the previous point on route is

shown. At the same time, the map section focuses on this point on route.

- There is a description of the complete route above the current point on route. The length and duration of the route are given here.

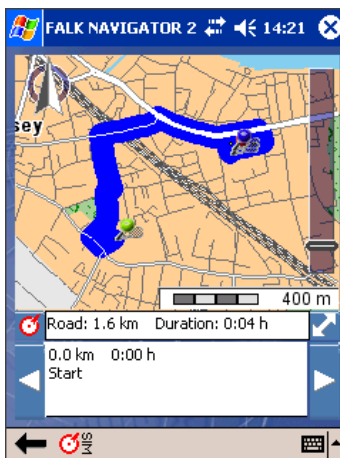




Fig. 19: Itinerary for navigation

- If you want to see the complete route on the map, tap the arrow symbol  next to the description of the complete route.
- Click on the  symbol to return to the navigation screen. Here you can start navigation.

Switching Between Day/Night Mode Manually

With the **Day / night mode** button you can adjust the colours used at the corresponding times of the day.

If you are driving at night or through a tunnel, select night mode. The brightness of the PDA screen is reduced so that you are not dazzled by the brightness of the screen.

Switching Voice Alert On/Off

To switch **voice alert** on or off, tap the corresponding button.

Recalculating the Route

Using the **Recalculate route** button, you can recalculate the route from your current position to the specified destination during the journey. This recalculation is useful, for example, when you select a road during the journey which is different to the one suggested by FALK NAVIGATOR.

Avoiding Roads in Advance

With the **Avoid road in advance** button, you can close road sections between 1km and 50km for navigation. FALK NAVIGATOR takes you off the specified road via the nearest possible junction and then recalculates the route. Of course on a motorway, the next exit is used as the starting point of the diversion.

Map View: 2D or 3D?

If you want to be presented with a 3D map view, activate the **3D** button. To return to the 2D map view, deactivate the **3D** button.

Note: Regardless of the type of map view (2D/3D) selected, you can always switch back and forth between the map view and junction view during navigation.

Exiting Navigation

Tap **Exit Navigation**. FALK NAVIGATOR then returns to the list of stop-off points.

Back to Navigation

By tapping the **Back to Navigation** button you close the additional settings and return to Navigation without making any changes.



7 Route Planner

7.1 Entering Destinations

The basic difference between Route Planner and Navigation is that the former also includes the point of departure in addition to the destinations. This means you can calculate routes between any points and specify the desired route before the trip.

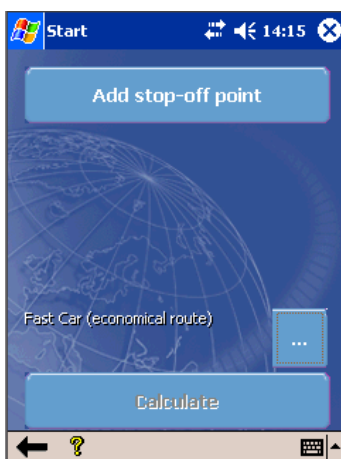


Fig. 20: Route Planner stop-off point list

Adding a Destination

1. Tap **Route Planner** in the main menu.
2. Using the pen, tap the button **Add stop-off point**.

The select destination window opens. Here you can enter the desired route. Select the point of departure and destination as described in chapter 5.

7.2 Editing the List of Stop-Off Points

Once you have chosen the point of departure and destination, you can start the route calculation or edit the list of stop-off points.



Fig. 21: Route Planner stop-off point list

Adding a Destination to the List of Favourites

1. Tap on the destination entry in the stop-off point list with the pen.
2. Leave the stylus on the destination entry for a few seconds.
A popup window with a selection list opens.
3. Choose the entry **Add to list of favourites**.

Your destination is then automatically added to the list of favourites and will be available the next time you select a destination. Further information on this topic can be found in chapter 5.4.

Positioning the Destination in the Stop-Off Point List

1. Tap on the destination entry in the stop-off point list with the pen.
2. Leave the stylus on the destination entry for a few seconds.
A popup window with a selection list opens. There are two methods of organising the stop-off point list:
 - **Move stop-off point up**
 - **Move stop-off point down**

The stop-off point is then moved according to the function you selected.

Deleting a Destination

1. Tap on the destination entry in the stop-off point list with the pen.
2. Leave the stylus on the destination entry for a few seconds.

A popup window with a selection list opens.


3. Choose the entry **Delete stop-off point**.

Your destination is then automatically deleted from the stop-off point list.

Note: The destination is however still available for destination selection under the entry **Previous destinations**.

Optimising Route Planning

FALK NAVIGATOR offers you optimisation settings for route planning. These settings serve as the basis for calculating the route.

1. Tap the button  to open the optimisation settings.

Selecting a vehicle profile

Using the **Vehicle** button, you can switch between the various types of vehicles and the entry "Pedestrian", during navigation.

- **Fast Car**
A vehicle which, on average, can travel 120km/h or faster on motorways and up to 80km/h on trunk roads.
- **Slow Car**
A vehicle which, on average, can travel 100km/h on motorways and up to 70km/h on trunk roads.
- **Pedestrian**

select the type of optimisation

Using the **Optimisation** button, you can choose from three types of optimisation, as under Navigation.

- **according to distance**
Takes you to your destination using the most direct route possible. Therefore you travel the minimum number of kilometres.
- **according to time**
This option involves taking roundabout routes via motorways/ bypasses around cities, if a time advantage can be achieved.

- **economical route**

This finds a compromise between the first two alternatives. The reason for the compromise is that a time advantage, achieved by travelling at higher speeds, can sometimes result in higher petrol consumption. Therefore the economical route is a compromise between the two extremes.

Tip: The **economical** route usually produces the best compromise between journey duration and route length.

Using/avoiding motorways

Using the **use/avoid motorways** you can decide whether or not FALK NAVIGATOR should use motorways during route planning.

Note: If this button is activated, then all motorways within a radius of approximately 100 km are avoided.

7.3

Route Planner Screen

The route planner screen shows the calculated route on a map.

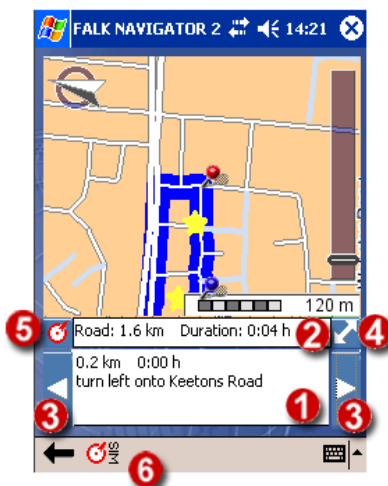




Fig. 22: Route planner screen with the calculated route and itinerary


- 1 One stop-off point at a time is shown in the window in the lower area.

- 2 You will find a description of the entire route length and duration above the current point on route.
- 3 Navigate through the itinerary by tapping the two buttons left and right of the current point on route. These buttons will show the previous or the next point on route respectively. At the same time, the map section focuses on this point on route.
- 4 If you want to see the complete route, tap the arrow symbol next to the description of the complete route.
- 5 Tap the  icon to open the **navigation screen** and start **navigation**.
- 6 By pressing the  icon you can start a navigation simulation.

7.4 More Settings

You can perform further settings for the simulation mode.

Note: However these functions are not really necessary for actual route planning. If you don't select a function, the menu automatically closes after four seconds and the route planner screen reopens.

1. Tap the  button to start the simulation.
2. Tap the arrow symbol in the bottom left corner.
*The **More Settings** dialog box opens.*

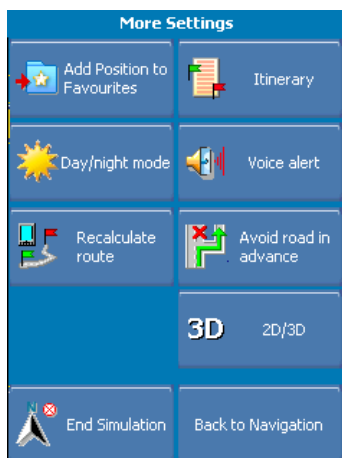


Fig. 23: More Settings

The following functions are available here:


Adding the Current Position to the Favourites List

Select **Add Position to Favourites** if you want to include your current position in your list of favourites.

Displaying the Itinerary for the Calculated Route

To show the **itinerary** for the calculated route, tap the corresponding button.

Tip: The map section can be modified by using the scroll bar (to change the size) and the compass (to change the direction the map is facing). By tapping and dragging the screen, you can also select the map section without changing the scale.

- Browse through the itinerary by tapping the two buttons left and right of the current point on route. The next or the previous point on route is shown. At the same time, the map section focuses on this point on route.
- There is a description of the complete route above the current point on route. The length and duration of the route are given here.
- If you want to see the complete route on the map, tap the arrow symbol  next to the description of the complete route.

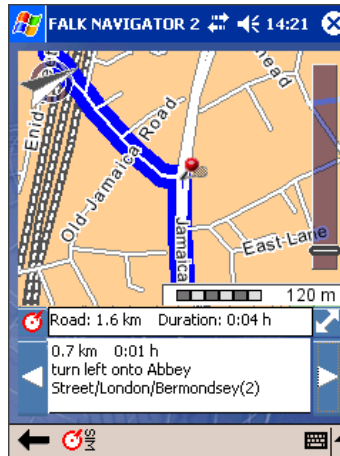




Fig. 24: Itinerary for Route Planner

- Click the  icon to switch to the navigation screen and to **start navigation**.
- By pressing the  icon you can start a navigation simulation.

Switching Between Day/Night Mode Manually

With the **Day / night mode** button you can adjust the colours used at the corresponding times of the day. If you are driving at night or through a tunnel, select night mode. The brightness of the PDA screen is reduced so that you are not dazzled by the brightness of the screen.

Switching Voice Alert On/Off

To switch **voice alert** on or off, tap the corresponding button.

Recalculating the Route

Using the **Recalculate route** button, you can recalculate the route from your current position to the specified destination during the journey. This recalculation is useful, for example, when you select a road during the journey which is different to the one suggested by FALK NAVIGATOR.

Avoiding Road in Advance

With the **Avoid road in advance** button, you can close road sections between 1km and 50km for navigation. FALK NAVIGATOR takes you off the



specified road via the nearest possible junction and then recalculates the route. Of course on a motorway, the next exit is used as the starting point of the diversion.

Ending the Simulation

If you don't need the simulation mode any more, tap **End Simulation**. You are then returned to the route planning screen with the itinerary of the calculated route.

Back to Navigation

By tapping the **Back to Navigation** button you close the additional settings and return to Navigation without making any changes.

8 Search for Next

FALK NAVIGATOR allows you to select destinations near to a specified position. This is useful, for example, when you are in an unfamiliar town and you want to search for a restaurant near to your hotel.



Fig. 25: Search for Next

Proceed as follows to find an address near a certain position.

1. Firstly set the starting point as described in chapter 5.6.

Note: You can only enter a town and street.

*The button on the upper edge of the screen then displays the entry **nearest addresses**. The lower section of the screen will then contain buttons that you can use to start the radius search.*

2. Select a **table** from the list of available tables.
3. Choose a radius from the **Radius** selection list.

Then FALK NAVIGATOR determines the nearest addresses within the specified radius and shows these in the list of results.

Tip: If you want to know where the destination is located first, tap **Show on map** to see the destination on the map.

4. If you want to select a new centre point for the radius search, tap the button **Select an address** and enter the desired address as described in chapter 5.1.



Fig. 26: Search for Next

5. Click **Apply**.

The program automatically switches back to Search for Next and uses the specified address as the centre point of the Search for Next.

Tip: If you want to see the nearest addresses in another table, just select the desired table from the list.

9 Settings

In the main menu of FALK NAVIGATOR you will find the Settings button, which opens a selection of options allowing you to customise the program to your needs. There are various different tabs available.

9.1 GPS Tab

Here you can configure the connection between your PDA and the GPS receiver.

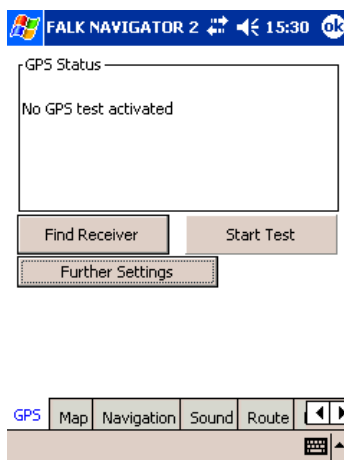


Fig. 27: GPS receiver settings

Note: It is recommended that you let the program find the receiver automatically. Ensure that the GPS receiver is connected to your PDA.

1. Tap **Find Receiver**.
If the search is successful, the required parameters to control the GPS receiver are automatically entered.
2. If you want to see the parameters or change them, tap **Further Settings**.

Note: Only advanced users should perform changes under **Further Settings**.



If the receiver search was successful, we recommend that you test the connection with the GPS receiver.

3. To do this, tap **Start Test**.

If the test is successful, the GPS data are displayed in the **GPS Status** area.

9.2 Map Tab

In the **Map** tab you can make the following settings:

- The **Displayed data sets** area shows the data which are visible on the map. All data sets that were supplied with the program or that you installed afterwards are listed here.
You can activate or deactivate the options at any time.
 - You can change the selection for all data sets very quickly with the buttons **Display all** and **Display none**.
 - However you can also show or hide individual data sets by tapping on the relevant data set with the pen.

The remainder of the options affect the display on the map.

- If you switch off the **Show street names** option, roads are no longer labelled on the map.
- You can activate or deactivate the option of rotating the map via **Show compass**.
- You also have the option **Show scale** or you can remove the scale from the map.
- By using the **Map facing north** option you can set the map view to always point north.

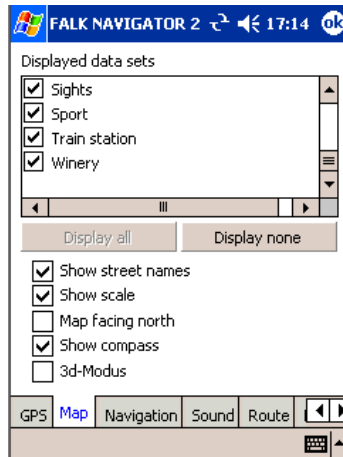


Fig. 28: Map Settings

9.3 Navigation Tab

In the **Navigation** tab you can make the following settings:

- In the **Displayed Elements** area you can specify which elements are visible in the navigation screen, see chapter 6.5.
- If the **Magnification dependent on speed** check box is selected, the scale, and therefore also the map section shown, is determined according to the speed.

Note: The option **Magnification dependent on speed** is preset.

- In the **Status Display** area you can specify which information you want to see in the two status indicators in the navigation screen.

1. Tap the **Left side** and/ or **Right side** selection list.

Each selection list contains these entries:

- Distance to destination
 - Distance to next junction
 - Time of arrival
 - Remaining travel time
 - Speed
 - Altitude
2. Select the desired entry.



In the navigation screen you will see the corresponding information for the chosen entry.



Fig. 29: Navigation Settings

9.4 Sound Tab

If you want to change the volume of the voice alert, you can make the relevant settings in the **Sound** tab.

- Set the **volume** so that you can hear the navigation instructions in the car. We recommend connecting an external speaker or using an earphone.
- You can activate or deactivate the **Greeting on Start**.

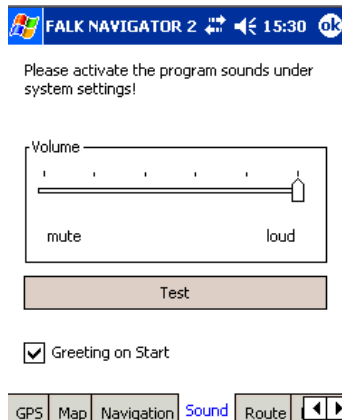


Fig. 30: Voice alert settings

9.5 Route Tab

The following settings are available in the **Route** tab:

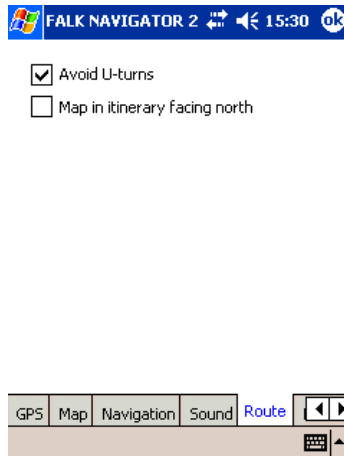


Fig. 31: Route settings

- Sometimes the shortest route is one that requires you to turn around after a junction. If you don't want to use these manoeuvres, select **Avoid U-turns**.
- If you want the map to always face north in the itinerary, tick the checkbox: **Map in itinerary facing north**.



9.6 Home Address Tab

In the **Home address** tab you can use your home address as the destination in navigation or route planning. In this way, you can quickly enter a route to take you home.

1. Tap **Specify new address** to select your home address or to change an existing address.
2. Fill out all of the fields to make sure that fleet navigator can recognise your address.

Note: If your address cannot be recognised, an error message will be displayed.

Fig. 32: Specifying a Home Address

3. Tap **Apply new address**.

If fleet navigator has recognised your address, it will be saved and displayed in the Home Address area.

There are two possibilities of navigating to your home address:

- The **home address** appears as the first entry in the list of favourites and can be chosen using the procedure for selecting a destination, which you will know from chapter 5.4.
- FALK NAVIGATOR creates an entry named **take me home** in the **Windows Start menu**. By clicking on **take me home**, FALK NAVIGATOR immediately starts to navigate to your home address.

Note: There is a maximum of 9 entries available in the **Windows Start menu** on your PDA. If the entry is no available, you can specify which entries should be visible under **Windows > Start menu > Settings > Set menus**.

9.7 System and Version Tabs

If you require help via our websites or our hotline, then it is helpful if you have the information in the **System** and **Version** tabs to hand. The tabs appear as in the following illustration:

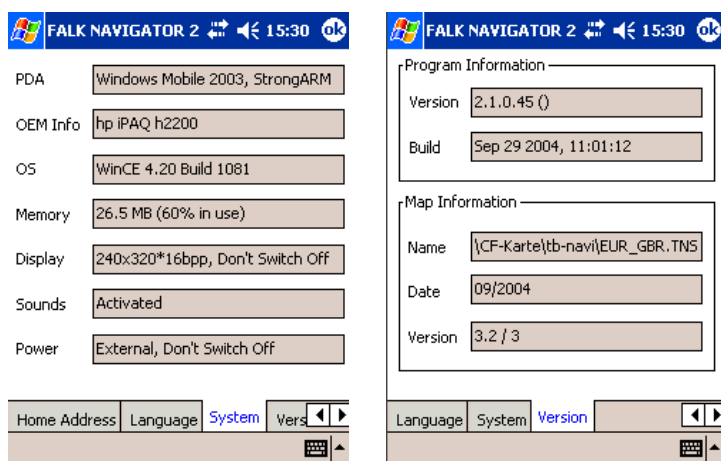


Fig. 33: Left: System tab. Right: Version tab



10 FALK NAVIGATOR Desktop

This chapter describes the functions of FALK NAVIGATOR that can be used in conjunction with a computer. In order to synchronise with your PDA, Microsoft® ActiveSync® must be installed.

10.1 The Program Window

Once the program has opened, the screen should look something like the one in the following illustration:



Fig. 34: Program window

To open: Click on the **FALK NAVIGATOR** icon or click the Windows **Start** button and select **Programs > FALK NAVIGATOR 2 > FALK NAVIGATOR 2**.



The Title Bar

The title bar contains the name of the program as well as the usual buttons for adjusting a window (minimise, maximise, close).

The Menu Bar

The menu bar is located under the title bar and contains the following commands:

- In the **File** menu, you will find functions for the **installation** of the navigation software, **loading the software onto the PDA** and to **exit** FALK NAVIGATOR.
- In the **Map** menu, you can create your own maps for your PDA navigation system via the **New** command, select maps to **load onto the PDA**, switch between installed maps using the **Browse** command and open the **route planner**.
- In the **Tools** menu, you will find commands for using your **personal addresses** from Outlook as destinations in FALK NAVIGATOR as well as for downloading **data sets on the internet**.
- The **Help** Menu Here you will see commands to access the program's **Help**, **Hotline** will open the details of the hotline service and **About** will display the copyright details and the **licence conditions**.

All the commands in the menu bar are also available in the main menu on the right of the screen.

The Main Menu

Load Map and Addresses onto PDA

With this menu command you can install maps and addresses on the PDA. You have a wizard at your disposal for loading maps and addresses.

This command also allows you to synchronise destinations with your PDA. Select the data sets (e.g. from Outlook or hotels) that you want to be available as destinations on the PDA.

The map data will be immediately loaded on to your PDA, without any further diversions to the memory card (addresses stored in the memory). Due to the amount of data, we generally recommend installing them on a memory card. Memory cards are available for PDA devices in specialist stores.

Create New Map

Using a complete map, you can create your own maps that include only those areas that you need. In this way you save valuable memory on your PDA.

The new map contains all the selected areas in the highest resolution - right down to streets and house numbers. These areas are embedded in the complete map. Motorways and trunk roads are included for all other areas so that you can always navigate between the selected areas without any problems.

Route Planner

With this menu command you plan routes on your computer without starting navigation. You can conveniently plan routes and display alternative routes.

Outlook Addresses

Use the contacts in your Outlook Address Book as destinations on your PDA. Here you can also record more addresses with house number accuracy and then synchronise them with Outlook and your PDA.

Data Sets on the Internet

Download data from the Falk Location Base and other sources. Then install them here so you can use them as destinations on your PDA. On the Internet you will also find a wide range of tourist sights and fast food restaurants, even speed traps, which you can show on your PDA.

Exit Program

If you want to exit FALK NAVIGATOR, click **Exit Program**.

10.2 Installing the Software on the PDA

When you start the desktop application for the first time, the Installation wizard starts automatically. The wizard helps you install FALK NAVIGATOR on your PDA.

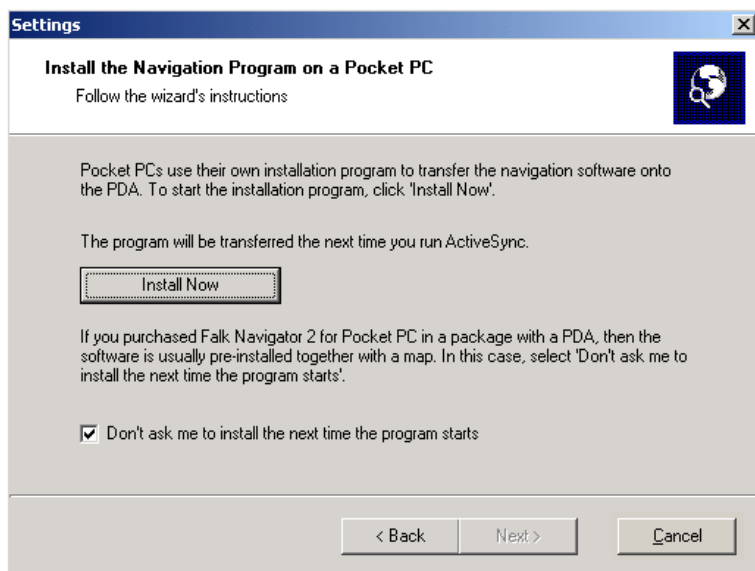


Fig. 35: Installation Wizard

1. Click **Install Now** to install FALK NAVIGATOR on your PDA. The installation wizard opens.

Tip: You can also start installation any time using the **Settings** command in the **File** menu of the FALK NAVIGATOR desktop.

1. If you purchased FALK NAVIGATOR in a package with a PDA, the software is usually pre-installed together with a map.
2. In this case, select **Don't ask me to install.....**

10.3 Load Map and Addresses onto PDA

This chapter describes in detail how to load maps and additional data sets onto the PDA.

Follow the wizard's instructions.

1. Click **Load Map and Addresses onto PDA**.
The PDA Map Loading Wizard opens.

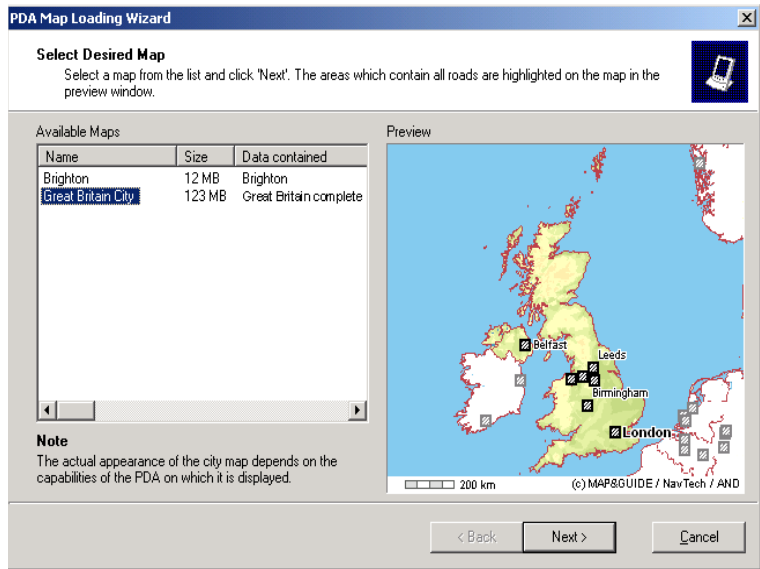


Fig. 36: Selecting the map

2. The wizard consists of two sections:
 - On the left, you will see all available maps (those supplied or purchased later, or ones you created yourself)
 - In the right half, you have the preview window. If no map appears in the preview window, click an entry in the list on the left to see the preview.
3. If you want to install a map on the PDA, select an entry from the list and then click **Next**.

Note: You also have the option of leaving maps already on the PDA unchanged and only changing the data sets. To do this, click **Next** without selecting a map. FALK NAVIGATOR now informs you that you have not selected a map.

*The window for selecting **additional data sets** opens. The dialog box has a navigator tree on the left with all data sets that can be displayed on the map.*

Note: If you wish to remove a map from the list, right-click on the desired entry and then on **Delete Map**.

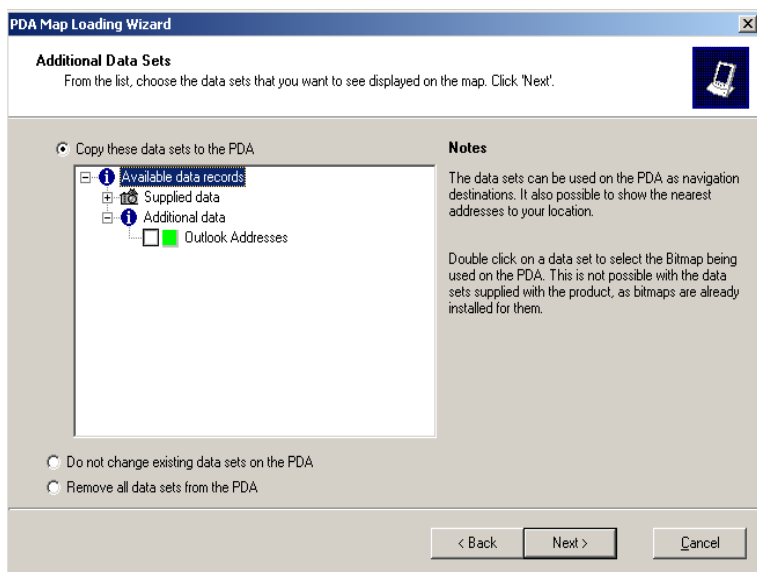


Fig. 37: Selecting additional data sets

4. Select the data sets that you want to use as destinations on the PDA. To do this, select the check box to the left of the description.
5. For the data in the **additional data** area you can also specify which image you want to use later to identify the destinations on the PDA.
6. Double-click an entry in the list.

*The **Select bitmap for address data** opens with a list of all the available images (bitmaps).*

Note: Ideally these should have a height and width of 16 pixels. Images of different sizes are automatically converted.

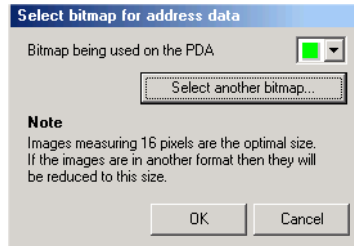


Fig. 38: Select bitmap for address data

7. Select an image from the **Select bitmap for address data** list, or click **Select another bitmap** to choose from more images.

In the next dialog box you can select any image (BMP format).

8. Confirm with **OK**.

The image is displayed in the list.

You can also leave the existing data sets on the PDA unchanged or remove them altogether.

To do this, you have two options:

- To to this, select **Do not change existing data sets on the PDA**.
This means any selection made in the list is disregarded.
- If you want to **Remove all data sets from the PDA**, select the corresponding option instead.

Any selection made in the list is also disregarded here.

9. Click **Next**.

*Once you have selected **data sets for copying to your PDA**, these are then converted into a format that FALK NAVIGATOR can use.*

Note: This can take a few minutes. A progress bar indicates how much of the process is complete.

10. Connect your PDA to the docking station of your computer.

If maps or data sets are copied to deleted from the PDA, the following window appears:

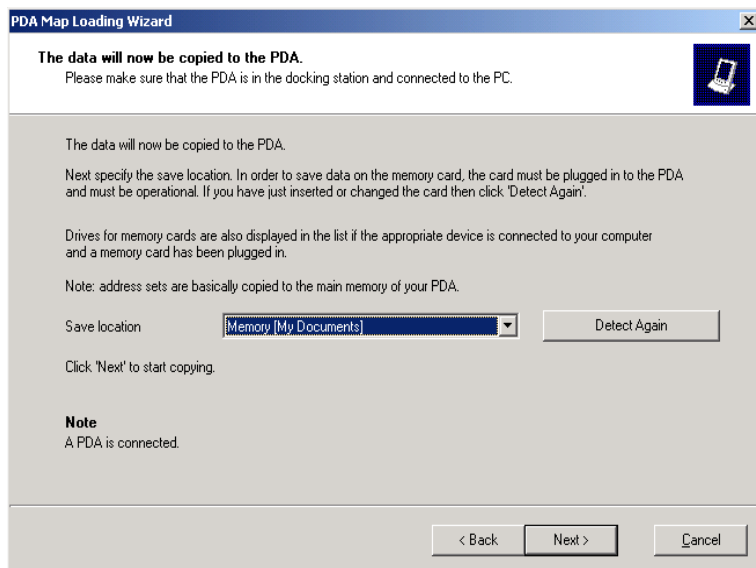


Fig. 39: PDA Map Loading Wizard

Note: You can select the save location in which the map and the data records should be saved in. If you have a memory card in the PDA, FALK NAVIGATOR Desktop automatically suggests this as the save location. All available PC memory cards are also listed, as long as at least one useable memory card has been inserted.

11. Click **Next**.

*The **Copying data...** window opens.*

After copying has been completed, a status message informs you that the process has been completed successfully and that you can start using the map immediately.

Switching the Memory Card

If you want to switch the memory card, or if you hadn't yet inserted the PDA into the docking station,

1. Click **Detect Again**.

FALK NAVIGATOR now searches for available memory cards again.

2. After you select the save location, click **Next**.

Copying now starts.

Note: This process can take a few minutes depending on the size of the card. A progress bar indicates how much of the process is complete.

Note: During copying it is important that you do not take the PDA out of the docking station and that you do not remove the memory card. Otherwise the map will not be copied. Furthermore, these actions may result in data loss on the memory card.

10.4 Create New Map

If you purchased FALK NAVIGATOR in a package with a PDA, the map is usually pre-installed on the PDA's memory card. There is usually only a little available memory left on the memory card with the complete map.

Because you generally only move around certain areas of a country, you usually only need a small map which shows these areas in high resolution.

The same way as you would only buy a city map of a city that you wanted to visit. An interurban map is usually enough for all other regions.

FALK NAVIGATOR applies this principle perfectly on the PDA. By creating your own map, you save valuable memory on your PDA. Routes are also calculated more quickly as the number of available roads is comparably small.

Selecting Towns and Personalised Sections

To create your own map section, follow the instructions of the wizard:

1. Click the Create **New Map** button in the main menu.
A window opens containing the explanatory notes for the wizard.
2. Click **Next**.

On the right-hand side of the window, you will see the installed map.

On the left-hand side, there are three tabs: **Towns**, **Regions** and **Personalised Sections**:

- The **Towns** tab contains an alphabetical list of all towns with over 20,000 inhabitants.
Click the name of the town to see it on the map.
To select a town, just click the check box to the left of the name.
A check mark appears in the box.
You can select all towns, clear the selection of all towns, as well as

reverse selection using the three buttons above the list.

Select the towns that you don't want and then click Reverse Selection.

- The **Regions** tab contains administrative areas (e.g. federal states, counties) and special regions. The list is simpler in design than the list of towns but works in exactly the same way. The buttons above the list are also the same as with towns.

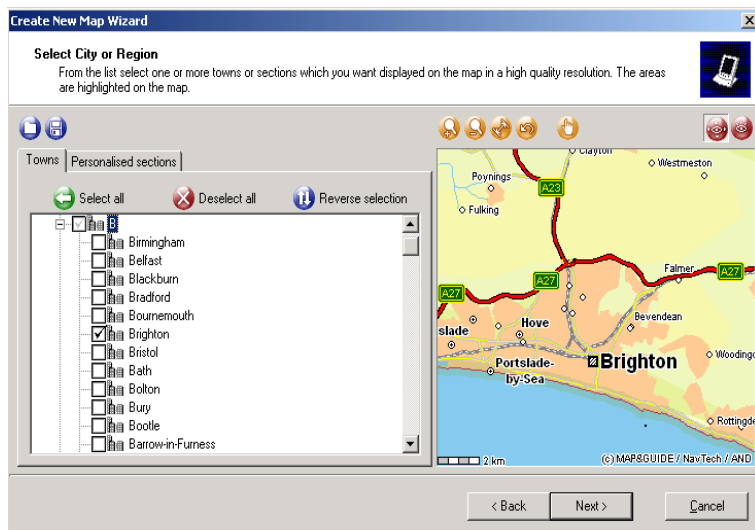


Fig. 40: Selecting towns or regions

- The **Personalised Sections** tab doesn't contain any entries at the start.
3. Select a section on the map using the mouse and then click **Apply**.
*An entry with the name **Personalised Section** followed by a consecutive number is added to the list.*

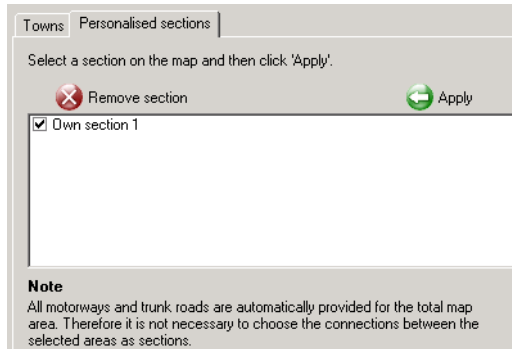


Fig. 41: Selecting your personalised sections

4. You can change the automatically assigned name by right-clicking the name and then selecting **Rename**.
*The **Change Name** dialog box opens.*

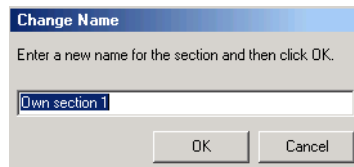


Fig. 42: Changing the names of your personalised sections

This name later appears in the list of included data when the map is selected for downloading to the PDA (see chapter 10.2).

5. After you have selected all the sections and towns that you want, click **Next**.
All selected towns, regions or personalised sections will be included on the map in high resolution with all roads, down to house number level. Motorways and trunk roads are included for all other areas so that you can navigate between the selected areas without any problems.

Entering map name and final check

6. In the next window enter the name of the map. This is the name that FALK NAVIGATOR will use on the PDA.

Note: Please note that there is only limited space available for the name on the PDA. Short, meaningful names are therefore recommended.



7. Click **Next**.

In the next window you can check again whether all entries are correct.

8. If you want to make changes, just click **Back** to return to the page where you either selected towns or entered the map name.

9. Click **Next**.

FALK NAVIGATOR Desktop then creates the new map.

Buttons above the map

The map on the right shows each selected area. Immediately above the map window you will find the buttons that allow you to work with the map. Using these icons, you can change the map view quickly and easily:



Zoom out



Zoom in



Display total view



Display previous map section



Moving a Map Section

You can control whether the map is shown in normal or preview mode using the two buttons to the right above the map.



In **normal mode** selected towns or regions are only outlined in the selected area.



In **preview mode** only those areas that will later appear in high resolution on the map are drawn. All other areas are hidden.

Buttons above the tabs

You can save your map design or earlier designs using the two buttons to the left above the list.



Load map design



Save map design

A map is not generated yet but the towns and sections that you have selected are saved so that you can easily add more sections to your map later.

Generating the map

The process of map generation can take some time. Wait until the process has finished.

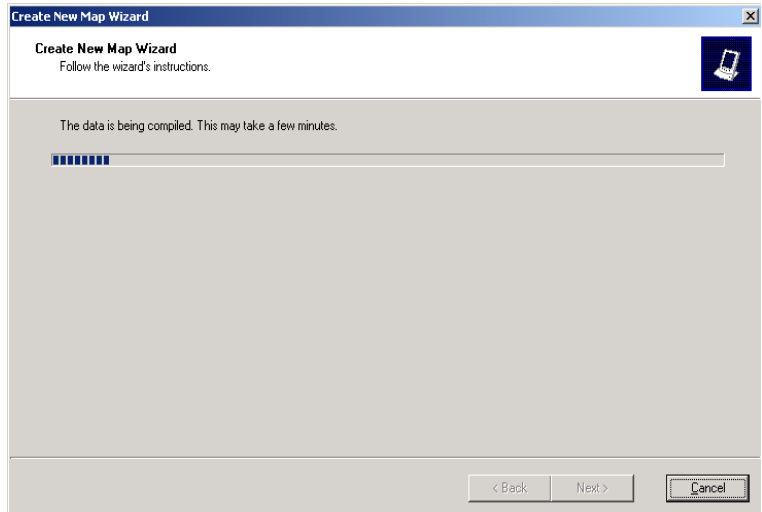


Fig. 43: Generating the map

After the process has been successfully completed, you can load the map onto the PDA. For more on this topic, see chapter 10.2.

10.5 Route Planner

FALK NAVIGATOR Desktop contains a route planner with which you can plan your trips on your computer.

1. To do this, click **Route Planner** in the main menu.
The route planning interface opens.

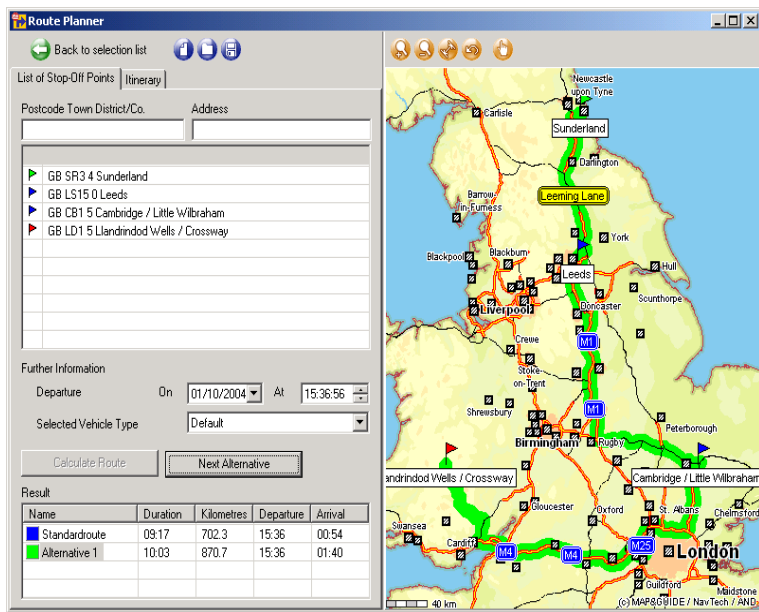


Fig. 44: Route Planner

Note: This window contains the standard Windows functions such as minimize, restore and close.

List of Stop-Off Points Tab

You can start planning a route in this tab. The List of Stop-Off Points tab contains all functions for entering stop-off points. In addition you can specify the departure time and the vehicle settings.

The calculated route will be shown in the results list of this tab and also drawn on the map.

In order to be able to plan a route, enter a point of departure and a destination. You can also enter points along the way to be included in the route.

Creating a list of stop-off points

The area for inputting stop-off points is on the left of the window. The map is on the right. You can resize the two areas using the mouse.

1. Click in the Postcode Town District/County text box and enter the name of the first stop-off point.
2. In the Address text box you can enter more details.

As you type, a list containing the results of the search opens beneath the text box.

Tip: You don't have to enter all values. FALK NAVIGATOR uses all available entries for the search and shows you a list of search results as you type.

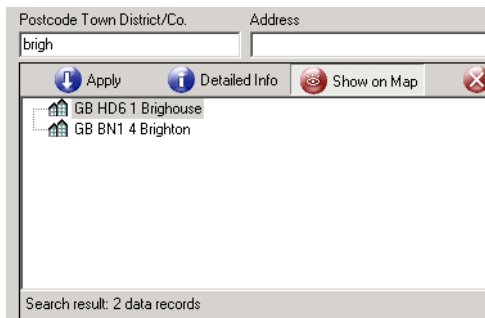


Fig. 45: Search as you type

3. Click the desired entry.
4. Click **Apply**.

The destination is added to the list of stop-off points.

Tip: Click **Detailed Info** to see additional information on the selected location or address. When the **Show on Map** button is pressed in, the location currently selected is shown on the map.

5. Click the Close button on the right of the list to exit the search without selecting any destination.

Note: FALK NAVIGATOR contains a comprehensive location database that contains more than 100,000 entries for Great Britain/Ireland alone. It includes even the smallest of districts. FALK NAVIGATOR also has a street index for almost every town in Great Britain/Ireland and even a house number index for many towns.



Creating stop-off point lists with address data

By entering special search terms, you can quickly access the wide range of location information and address data available in FALK NAVIGATOR.

1. First enter the town that you want to search, then a space followed by a plus sign. Directly after the plus sign enter the search term.

Examples:

- If you want to find all hotels in Dublin, enter "**Dublin +Hotel**".
- If you want to find only Best Western hotels in Dublin, enter "**Dublin +Best**".
- If you enter "**Glasgow +station**", Glasgow train station is returned.
- If you synchronised your Outlook Address Book with FALK NAVIGATOR, you can select the destination (located in York for example) by entering "**York +Outlook**" or "**York +Address**".

Note: So that FALK NAVIGATOR can recognise that a special search term has been entered, you must enter the term directly after the plus sign. There cannot be a space between the two.

Search terms themselves can include spaces. So that FALK NAVIGATOR does not incorrectly interpret these entries however, you must put them between inverted commas, for example, Dublin + "Best Western".

Symbols in the list of stop-off points and on the map

The following colours are used in the list of stop-off points and on the map to indicate information:

- Green: **Point of departure**
- Blue: **Point on route**
- Red: **Destination**

Selecting a Vehicle Profile

By using the **Selected Vehicle Type** list, you can choose between various vehicle profiles.

1. Select the vehicle type that best describes your own vehicle.
 - **Default**
A vehicle which, on average, can travel 100km/h or faster on motorways and up to 80km/h on trunk roads.

- **Fast Car**
A vehicle which, on average, can travel 120km/h or faster on motorways and up to 80km/h on trunk roads.
- **Slow Car**
A vehicle which, on average, can travel 100km/h on motorways and up to 70km/h on trunk roads.

Buttons above the tabs

Using the icons on the left, above the tab, you can create a new stop-off point list, load stop-off point lists you saved earlier and save the current stop-off point list.

Note: The buttons are only visible if the associated function is available. You can't save a list of stop-off points if the list doesn't contain any entries for example.



New Stop-Off Point List



Load List of Stop-off Points



Saving a Stop-Off Point List

Buttons above the map

Immediately above the map window you will find the buttons that allow you to work with the map. Using these icons, you can change the map view quickly and easily:



Zoom out



Zoom in



Display total view



Display previous map section



Moving a Map Section

Tip: You can select map sections yourself using the mouse. To do this, hold down the mouse button and drag a frame across the desired area. The selected area is then immediately enlarged and replaced by a detailed map. If you keep SHIFT pressed at the same time, you can also move the map. The map is not enlarged.

Shortcut menu

1. Right-click directly on the map.

The shortcut menu opens and displays a list of all available map functions.

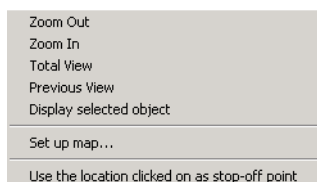


Fig. 46: Map shortcut menu

- The functions in the upper part of the list relate to map navigation. You can **zoom out** from or **zoom in** on the current map view, **display the total view** of the map, return to the **previous view** show the selected object on the map.
- The **Set up Map** command allows you to specify which elements are visible on the map. The settings relating to map data and visibility allow you to select data shown on the map in the list. You can hide the individual data areas on the map (or show them again) by clicking the desired level and then selecting or clearing the check box below the list.



Fig. 47: Configuring the map

- The Font Smoothing function is only available under Windows 95, Windows 98 and Windows ME operating systems. If this function is active, slanted street names are easier to read.
- If you want to use the **click-point as the destination**, then select the corresponding command in the menu. FALK NAVIGATOR then inserts this spot as a stop-off point and derives its description from the nearest location or street.

Creating an itinerary

Once you have entered two stop-off points, you can have the **route calculated**.

1. In the **List of Stop-Off Points** tab, click the **Calculate Route** button.
After route calculation, you can read the result in the list at the bottom of the screen.

Result				
Name	Duration	Kilometres	Departure	Arrival
Standard route	00:24	23.7	12:56	13:21

Fig. 48: Result of route calculation

The calculated route is shown in the same colour on the map.



Calculating alternative routes

You can calculate up to three alternative routes.

1. To do this, click **Next Alternative**.


The alternative routes are then also included in the list of results.

2. Click one of the routes to see it on the map. The colour symbol on the left of the list indicates the colour of the calculated route on the map.

You can view the detailed route by going to the Itinerary tab.

Saving a Stop-Off Point List

Using the **Save stop-off point list** function, you can assign a name to the current stop-off point list or overwrite existing lists. You can also make the stop-off point lists available for your navigation system.

1. Create a list of stop-off points as described earlier in this chapter.
2. Click the  **Save stop-off point list** button.

*The **Save List of Stop-Off Points** dialog box opens:*

- A name is automatically entered in the **Name of Stop-off Point List** box. This name consists of the point of departure and destination. You can either accept the name or change it to something else.
- The **Existing Stop-Off Point Lists** area contains all the previously saved stop-off point lists.

Note: If you save a modified or new stop-off point list with an existing name, the previous stop-off point list will be overwritten.

3. Click OK.

The stop-off point list is then saved under this name.

Load List of Stop-Off Points

Using the **Load stop-off point list** function, you can load one of the previously saved stop-off point lists.

1. Click the  **Load stop-off point list** button.

*The **Load List of Stop-Off Points** dialog box opens.*

2. Choose the desired list from the **Available Stop-Off Point Lists** area.

Note: If you have already entered stop-off points for a new route, then these points will be discarded and the selected stop-off point list will be opened in the route planner.

3. Click OK.

The stop-off points will be automatically added to the route planning list and a route can then be planned for them.

Itinerary Tab

You can switch between the **list of stop-off points** and the **itinerary** using the tabs at the top of the screen.

Note: Of course, an itinerary is only available if you have first calculated a route.

The itinerary contains all the important driving instructions and details on the direction that you have to travel in. The distance (in kilometres) from the point of departure and the calculated time is also given.

The upper area of the itinerary provides you with an overview of the routes as well.

Click a route to switch to the associated itinerary. The route is then also shown on the map.

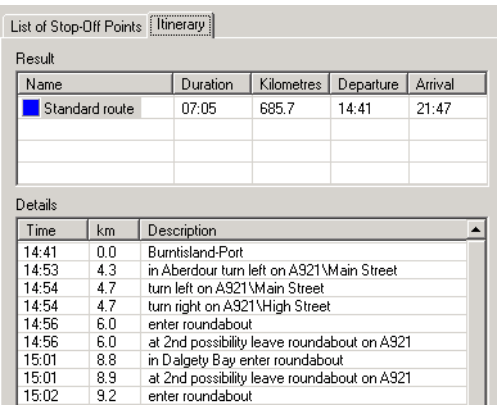


Fig. 49: Itinerary with result view

10.6 Outlook Addresses

A simple and easy-to-use synchronisation function allows you to use contacts in your Outlook Address Book as destinations in FALK NAVIGATOR. You can also add more details to your addresses and then synchronise these again with Outlook.

1. Click **Outlook Addresses** in the main menu to start the wizard.

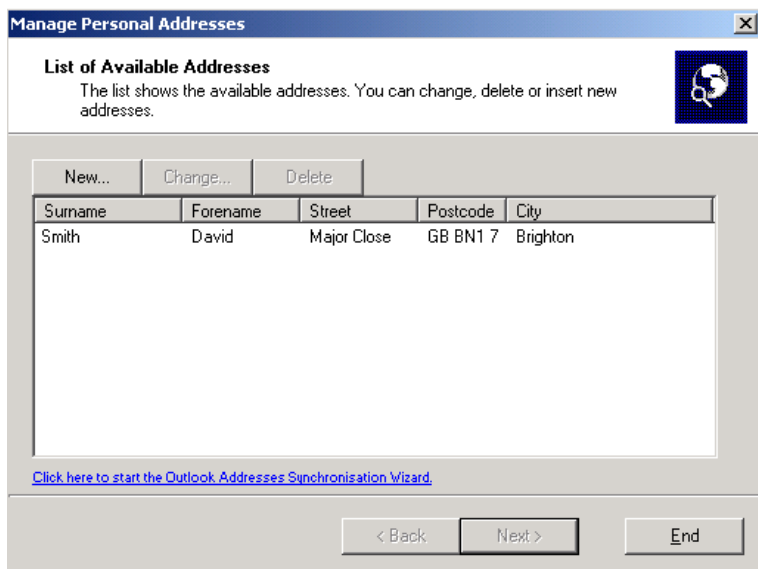


Fig. 50: Manage Personal Addresses wizard

The list shows all addresses that are currently available as destinations. You can record new destinations, and change or delete existing ones. You can also start Outlook synchronisation from the wizard.

Creating or Changing Addresses

This is how to create a new destination or change an existing one:

1. In the wizard click either **New** or **Change**. A window opens in which you can enter general data.
2. Enter general data such as surname, first name, telephone number and e-mail address.
3. Click **Next**.

The window where you enter the address opens.

4. Enter the address as fully as possible including the street and house number.

Possible matches are found whilst you type and are displayed in a window.

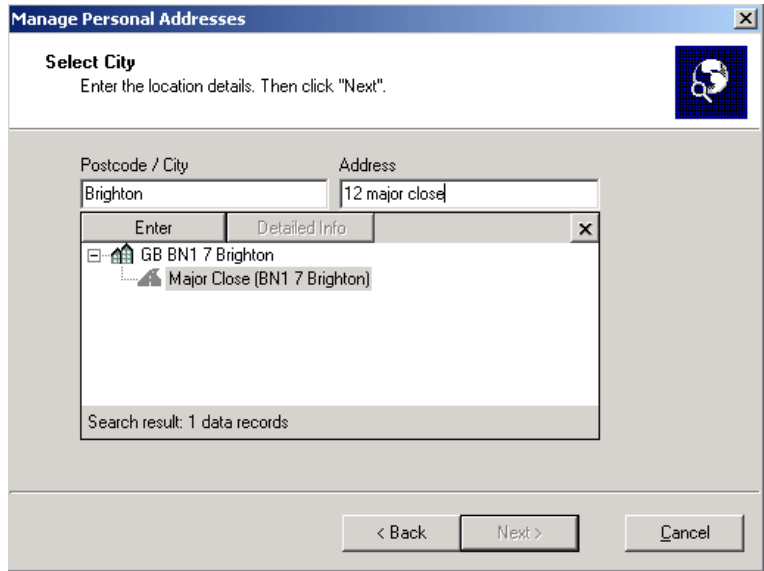


Fig. 51: Entering the address

5. Select the correct entry from the list.
6. Click **Apply** and then **Next**.
Now your full details are displayed in a window once again. You can also see where the address is located on a section of map.
7. If all the data are correct, click **Next**. Otherwise change the details by clicking **Back**.

The new or changed address is now shown in the list.

Synchronising Addresses with Outlook

Before FALK NAVIGATOR can use the contacts in your Outlook Address Book as destinations, you must first import the contacts.

The synchronisation of modified addresses for Outlook and the importing of Outlook contacts for FALK NAVIGATOR are both performed in the same step. If FALK NAVIGATOR detects that addresses have been created or changed, you will be asked whether you want to add these contacts to your address book in Outlook and synchronise them.

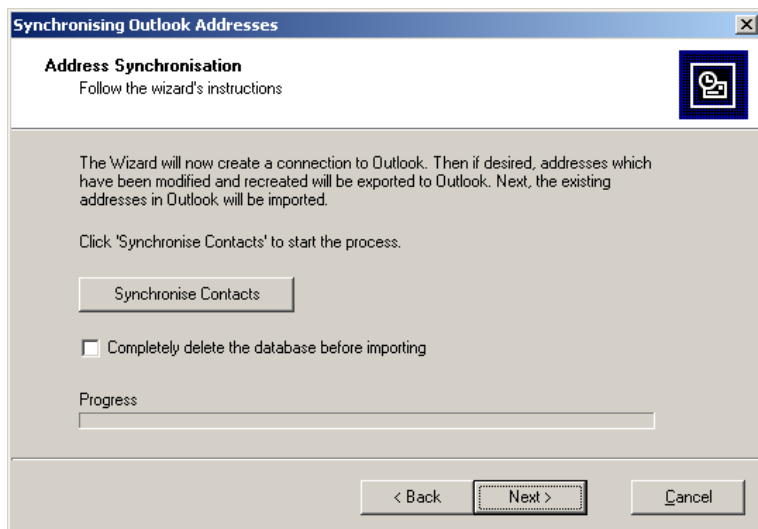


Fig. 52: Synchronising Outlook Address Book

Proceed as follows:

1. Click **Synchronise Contacts**.

Importing starts. You can also decide whether you want the FALK NAVIGATOR database to be deleted before importing; this is not usually necessary.

Note: Data records that already exist in FALK NAVIGATOR are only synchronised; they are not imported a second time.

Tip: You can also skip this step by immediately clicking **Next**; no data will be imported from Outlook.

Assigning the address to co-ordinates.

This process is also called geocoding. Geocoding involves trying to determine a unique geographical co-ordinate from the address details using the FALK NAVIGATOR location database. Only then can FALK NAVIGATOR use the data as destinations.

2. Click Start Geocoding.

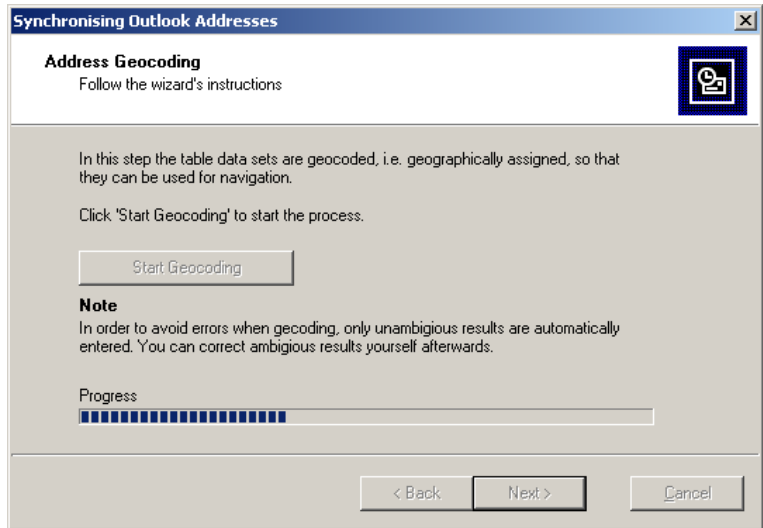


Fig. 53: Geocoding the addresses

The co-ordinate is only automatically assigned if the result is unambiguous.

Note: Data records that have already been geocoded are not reassigned a co-ordinate.

Tip: You can also skip this step by immediately clicking **Next**; no data will be geographically assigned.

After you have performed these steps, the list of addresses is shown again.

10.7 Data Sets on the Internet

You can download data from many different locations on the Internet and then use them in FALK NAVIGATOR as destinations. These could be Falk Location Base data such as hotels, restaurants or holiday destinations, but tourist sights and fast food restaurants can also be shown on your PDA.

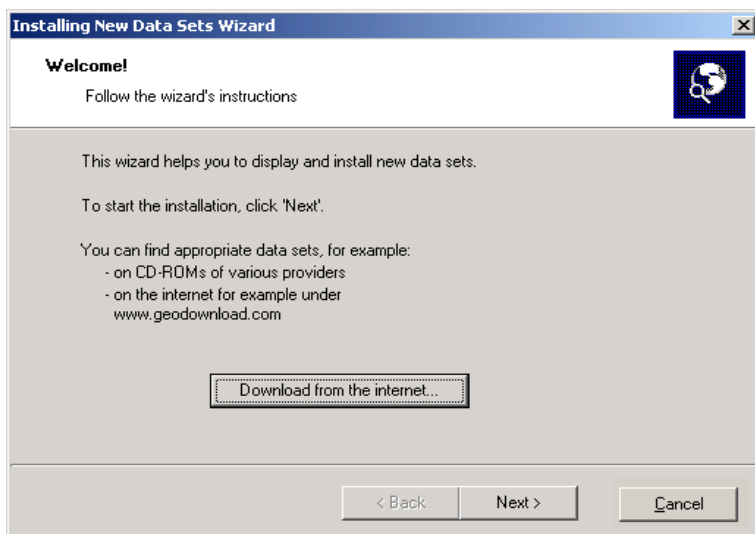


Fig. 54: Installation of New Data Sets wizard

1. Click **Data Sets on the Internet** to start the wizard.
You can directly access a portal that contains relevant data sets from the welcome page that opens.
2. Click **Download from the Internet**.
The Download from the Internet page opens.
3. Choose the desired data set.
4. Click **Close**.
5. Click **Next**.
The Installing New Data Sets wizard opens.
6. Click **Browse** and select the path to the location that you downloaded the data set to.

The following steps are very simple and are for the most part self-explanatory. The data set is unpacked and installed. When FALK NAVIGATOR is restarted, the data set will be available and can be synchronised with the PDA; For more on this topic, see chapter 10.2.

Glossary

ActiveSync

A program that manages synchronisation between the Pocket PC and the desktop computer and/or a server.

Alternative route

FALK NAVIGATOR also allows you to calculate alternative routes based on your specific criteria. The alternative route is shown on the map in green.

Drag-and-drop

Using this method you can change the order of entries in a list, for example.

1. Left-click the element that you want to move and hold down the mouse button.
2. Move the point to the desired location and let the element "drop" by releasing the mouse button. Finished!

GPS

The abbreviation GPS stands for **G**lobal **P**ositioning **S**ystem.



Licensing Agreement

Subject Matter of the Licensing Agreement

The subject matter of the Licensing Agreement is the purchased item contained in this software and data pack.

The software and data are protected by copyright. MAP&GUIDE GmbH holds all the legal powers necessary to grant the customer the rights identified under Section 2. Inasmuch as third-party data stocks are incorporated, MAP&GUIDE GmbH holds the appropriate rights of exploitation.

Scope of Utilisation Rights

MAP&GUIDE GmbH grants the Licensee (purchaser) a non-exclusive (simple) right to use the software and data for their intended purpose on a computer, this being without any time limitation but subject to the following rulings.

The data is to be used together with the software by one single user only on one single computer. The Licensee is permitted to install the software on a hard disk and to print results for his/her own purposes. He/she is also permitted to make a back-up copy which is to be marked as such. This copy is to be used for back-up only and will remain in the possession and under the lock and key of the Licensee. No other duplication is permitted.

The software and data are only permitted to be used in a network or multi-user system if the Licensee has obtained a special licence for this purpose, such a licence being for every monitor or every workstation from which the software and data can be used at any given time.

The Licensee is not permitted to translate, process, amend or arrange the software and data, or the results obtained from use of the same, with the aim of creating a product of his/her own. Software and data are not permitted to be made accessible, rented, disseminated or publicly reproduced as part of business activities. In particular, they are not to be made accessible on the internet, unless a written agreement to this effect has been made with MAP&GUIDE GmbH.

The Licensee has the right to assign the title to the software and data to third parties, provided that he/she presents a written submission to MAP&GUIDE GmbH, stating that he/she is passing on the product and not retaining a copy of the data carrier or software and provided that the third



party submits a written undertaking directly to MAP&GUIDE GmbH in which he/she enters into an obligation to observe these present rulings on use.

Term of the Licence

This Licensing Agreement takes effect on purchase of the software and data and on opening of the packaging. If no other ruling is made, this Agreement shall be effective on a long-term basis.

MAP&GUIDE GmbH can revoke authorisation to use the product for good cause. There may be deemed to be good cause, in particular, if the Licensee does not observe the restrictions on use defined in Section 2 or infringes the obligation to maintain confidentiality as under Section 4 and if he/she fails to discontinue such action immediately when given a written warning containing a threat to revoke the rights.

If authorisation to use the product is revoked, the Licensee shall surrender the original data carriers and any existing copies and shall delete the software and data from his/her computer. He/she must submit to MAP&GUIDE GmbH written confirmation of full surrender and deletion.

Confidentiality and Storage

The Licensee undertakes to store in a suitable manner both the contractual items and any copies made of the same and to secure these items in a way ensuring that no third parties have access to them or can learn of their content.

The Licensee's employees are to be notified of the legal situation relating to the software and data.

Test Versions

Authorisation to use test versions is restricted to a period of 30 days after software installation. Test versions also have no more than a restricted operating time in technical terms. Contrary to Section 2 Para. 4, they are not to be passed on to third parties under any circumstances.

Licensing Fee

For the granting of the above-identified right of use of the software and data, the Licensee shall pay a non-recurring licensing fee which will be specified by the contracting parties in a separate agreement.

This fee simultaneously covers licensing charges for the use of third-party software and data stocks under this Agreement.

Reservation of Ownership

The software and data package will remain the property of MAP&GUIDE GmbH until the licensing fee under Section 6 has been paid in full.

Pledging of the package or assignment of the same as security by the Licensee are not permitted before the licensing fee has been paid in full. In the event of attachment of the software and data package by third parties, the Licensee will give notification that the package is the property of MAP&GUIDE GmbH – insofar as the licensing fee has not been paid in full – and will inform MAP&GUIDE GmbH without delay.

If the Licensee fails to comply with the Agreement – in particular if he/she is in default on payment –, MAP&GUIDE GmbH has the right to repossess the software and data package or, if applicable, to require assignment of the Licensee's claim to recovery of possession from third parties, without such repossession by MAP&GUIDE GmbH representing rescission of the contract.

Guarantee

a) The Licensee shall give notice of obvious defects within a reasonable period of time and in writing by giving an exact description of the fault. If the Licensee is a commercial trader, he/she shall also examine the supplies and services of MAP&GUIDE GmbH without delay and give notice of defects discovered without delay according to sentence 1. It is the obligation of the Licensee to detect and list any faults. Delayed, insufficient or unfounded notifications of defects shall release MAP&GUIDE GmbH from its duties to perform. However, if MAP&GUIDE GmbH nevertheless takes action, the costs thereof shall be invoiced to the Licensee by MAP&GUIDE GmbH.

b) MAP&GUIDE GmbH guarantees that program functions can be executed without faults according to the program descriptions and contractual documents. There is consensus between the parties that software faults cannot be excluded due to the nature of technology, even if such software is created with due care.

In particular, MAP&GUIDE GmbH does not warrant that the program functions of the software and data meet the requirements of the Licensee.

c) MAP&GUIDE GmbH may also perform under a guarantee for received standard products by effecting subsequent improvement. Subsequent improvement is effected through the rectification of the fault, through the handing-over of a new program or data stock or by MAP&GUIDE GmbH showing ways to retrieve a new program or data stock even if this leads to an acceptable level of expenditure incurred due to an adaptation or a conversion.

d) The Licensee must give MAP&GUIDE GmbH sufficient opportunity and time to carry out any subsequent improvements and provide replacements appearing necessary to MAP&GUIDE GmbH; otherwise MAP&GUIDE GmbH shall be discharged from any liability for the consequences resulting therefrom.

The Licensee shall support MAP&GUIDE GmbH in correcting faults (by providing descriptions of faults and test data, employee information, enabling access to the installation etc.). The Licensee shall take adequate measures, in particular by making data back-ups, if the software is not fully or only partially functioning.

Only in urgent cases if the operating safety is endangered and to prevent an excessively large amount of damage is the Licensee entitled to rectify the fault himself or have such rectified by third parties and to demand the reimbursement of the necessary expenditure by MAP&GUIDE GmbH; in such a case, the Licensee is also required to notify MAP&GUIDE GmbH without delay.

e) The Licensee is entitled to withdraw from the contract in accordance with statutory provisions if, taking into account the statutory exceptions, MAP&GUIDE GmbH allows a reasonable additional period of time to pass by in vain which is granted to it to effect a subsequent improvement or make a substitute delivery due to a material defect.

However, the Licensee only has a right to reduce the purchase price if a defect is no more than minor.

In other respects, the right to a reduction in price of the contract is excluded.

MAP&GUIDE GmbH shall not accept any guarantee in particular for

- faulty, improper installation, use and handling by the Licensee
- improper maintenance
- natural wear and tear.

f) MAP&GUIDE GmbH shall support the Licensee during fault diagnosis and rectification even if it is not certain that a fault is due to the supplies and services of MAP&GUIDE GmbH. If it is established that the supplies and services of MAP&GUIDE GmbH are not faulty, MAP&GUIDE GmbH shall bill the expenses incurred to the Licensee.

g) Should the Licensee or a third party carry out a subsequent improvement improperly, MAP&GUIDE GmbH shall not be liable for any consequences resulting therefrom.

Guarantee claims shall also expire if the subject matter is altered and the Licensee fails to furnish proof that the fault has occurred irrespective thereof.

Moreover, MAP&GUIDE GmbH shall not accept a guarantee for as long as the Licensee uses the subject matter contrary to the restrictions on use and § 3 GTC.

Liability

a) If it is not possible for the customer to use the subject matter in the manner stipulated in the contract and if MAP&GUIDE GmbH is at fault for this, the claims under section 9 apply accordingly to the exclusion of further claims of the Licensee.

b) For damage which has not occurred to the subject matter itself, MAP&GUIDE GmbH shall be liable, irrespective of the legal grounds, only in case of

- wilful intent
- the gross negligence of the managing director or of executive employees
- death, injury or an impairment to health caused by the subject matter
- defects which were fraudulently concealed or the absence of which was guaranteed
- defects in the subject matter insofar as MAP&GUIDE GmbH is liable for personal injury and damage to property of privately used objects under the Product Liability Act.

c) In the event of a culpable breach of essential obligations under the contract MAP&GUIDE GmbH shall be liable also for the gross negligence of non-executive employees and for slight negligence, in the latter case restricted to damage typical for the contract which was reasonably foreseeable.

d) Further claims are excluded.

e) MAP&GUIDE GmbH may plead that the Licensee is jointly responsible for the damage.

f) Insofar as insurance cover exists, MAP&GUIDE GmbH shall place the insurance payment in full at the Licensee's disposal irrespective of the limitation of liability agreed.



Statute of Limitations

All of the Licensee's claims, irrespective of the legal grounds, shall become statute-barred after 12 months; if the subject matter concerns new items of moveable property and the Licensee is a consumer, all claims shall become statute-barred after 24 months.

Statutory provisions apply to intentional or fraudulent conduct as well as to claims under the Product Liability Act. The start of the statute of limitations is based on statutory provisions.

Final Clauses

The Licensing Agreement made here shall be governed by the law of the Federal Republic of Germany with exclusion of UNCITRAL commercial law. The place of fulfilment of all obligations resulting from this Agreement is Karlsruhe. In relation to all disputes resulting from this Licensing Agreement, the contracting partners agree Karlsruhe to be the place of jurisdiction if the Licensee is a commercial trader entered in the commercial register or the equivalent.

Last amended: 02.10.03

MAP&GUIDE GmbH

Index

A

- ActiveSync 81
- address
 - selecting as destination 22
- addresses 76
 - synchronise with Outlook 77
- airbags 1
- alternative route 81

C

- Calculating 74
- contacts 78
- co-ordinates 78

D

- data sets 61
- day/night mode 34, 43
- desktop 55
 - main menu 55
- destination
 - add to list of favourites 38
 - delete 39
 - entering town and address 20
 - move 38
 - organise in stop-off point list 38
 - select from addresses 22
 - select from favourites 23
 - select from previous destinations 24
 - select on the map 25
- device 53
- drag-and-drop 81

E

- entering destinations 27, 37

- exit 57

F

- Falk Navigator
 - install 4
- favourites
 - selecting as destination 23
- further settings 33

G

- geocoding
 - start 78
- GPS 81
 - activate 7
 - function 5
 - GPS tab 47
 - locating 7
 - receiver 5
 - satellite 5
 - settings 47

H

- how to use 12

I

- information 53
 - version 53
- installation 3
- Itinerary 75
- itinerary
 - calculate 73
 - create alternative routes 74
 - navigation 34
 - display 33
 - route planner 43
 - display 42



itinerary tab 75

L

list of stop-off points 37, 68

M

map

- 2D map view 14, 35
- 3D map view 14, 16, 35
- create 67
- junction view 14, 17
- load onto PDA 56, 58

map name 67

map sections 72

map window 71

N

navigate

- across countries 30
- in area of total map 30

navigating

- exit navigation 35
- recalculate route 35
- use/avoid motorways 30

navigation 27

navigation screen 31

new map 63

- creating 57

O

Outlook 75

Outlook addresses 57, 75

P

passenger safety systems 1

passenger(s) 1

PDA

- installation 4
- opening the program 11

settings 47

Positioning 38

Q

quick introduction 7

R

requirements 3

route planner 37, 57, 67

route planner screen 40

routes

- end simulation 44
- recalculate route 43
- use/avoid motorways 40

S

safety 1

search for next 45

sections 63

select on the map 21

select the type of optimisation 29, 39

Selecting 70

selecting a destination 1, 19

Settings 33

settings

- GPS 47
- home address 52
- map 48
- map display 72
- navigation 49
- PDA 47
- route planning 51
- voice alert 50

Shortcut 72

shortcut menu 72

software

- install 57

sound 50

Start

Falk Navigator 8

stop-off point list

buttons 70

create 69

edit 27

load 74

save 74

support 5

V

vehicle profile 70

select 29, 39