
Copyright

- ▶▶ © 2004 MAP&GUIDE GmbH, Karlsruhe; FALK.MARCOPOLO. INTERACTIVE GmbH, Ostfildern; VARTA-Führer GmbH, Ostfildern; NAVTECH B.V., NL
- ▶▶ All brand or product names in this document are trademarks or registered trademarks of the corresponding companies or organisations. All rights reserved.

Disclaimer

- ▶▶ No responsibility is assumed for the accuracy of the contents of this documentation. Notes on errors will be gratefully received at any time.
- ▶▶ The information contained in this document is subject to change without notice and should not be construed as a commitment on the part of the vendor
- ▶▶ No part of this documentation may be reproduced or transmitted, in any form, or by any means, electronic or mechanical, by photocopying, recording, or information processing systems for any uses other than the personal use of the purchaser, without the prior written permission of MAP&GUIDE GmbH.

Imprint

- ▶▶ MAP&GUIDE GmbH
Albert-Nestler-Straße 10
76131 Karlsruhe
Germany
Tel.: +49 7 21 78 16 - 0
Fax: +49 (0) 7 21 78 16-599
www.mapandguide.com
 - ▶▶ Status: January 2004
-



Table of Contents

1	Welcome!	1
1.1	Safety Advice	2
2	Installation of Falk Navigator	4
2.1	Requirements	4
2.2	Installing Falk Navigator on a PC	4
2.3	Installation on the PDA	5
2.4	Installing Additional Maps	6
2.5	The GPS Receiver	6
3	Quick Introduction to Falk Navigator	8
4	General Information about Falk Navigator on a PDA	11
4.1	Opening Falk Navigator on a PDA	11
4.2	How to Use Falk Navigator.....	12
4.3	Using the Map	13
5	Selecting a Destination	16
5.1	You know the town and the address of the destination....	17
5.2	You want to select a point on the map as the destination	19
5.3	You want to select an address as the destination	20
5.4	You want to select a favourite as the destination	22
5.5	You want to select one of the last destinations as the new destination	23
5.6	You want to select a destination near to an address	24



6	Navigation	25
6.1	Entering Destinations.....	25
6.2	Editing the List of Stop-Off Points	26
6.3	The Navigation Screen.....	28
6.4	Map and Junction View.....	30
6.5	Other Functions.....	31
7	Route Planner	34
7.1	Entering Destinations.....	34
7.2	Editing the List of Stop-Off Points	35
7.3	The Routing Screen	37
8	Search for Next	38
9	Settings	40
9.1	Map.....	40
9.2	Navigation	41
9.3	Voice Alert.....	42
9.4	Route	43
9.5	GPS.....	44
9.6	Specifying a Home Address.....	45
9.7	Setting the Language and Unit of Measurement	46
9.8	Device and Version Information	47
10	Falk Navigator Desktop	48
10.1	The Main Menu	48
10.2	Installing the Software on the PDA.....	50
10.3	Load Map and Addresses onto PDA	52
10.4	Create New Map	56
10.5	Route Planner	62



10.6	Personal Addresses	69
11	Glossary	75
12	Index	77
13	Licensing Agreement	80
14	Appendix	86





1 Welcome!

Congratulations on purchasing TYPHOON MyGuide, the complete navigation package for your Personal Digital Assistant (PDA) which includes the most up to date operating system Windows PocketPC 2003. TYPHOON MyGuide is made up of perfectly matched components and its audio and visual driving instructions will ensure that you reach your destination safely and without stress.

In addition TYPHOON MyGuide has been perfectly tailored for use in a company. For example it can use your Outlook contacts as navigation destinations.

This user's guide explains step by step how to use the Falk Navigator software. You can setup the PC functions by using the CD-ROM included in this package.



Enjoy using our product and we wish you a safe trip.



1.1 Safety Advice

For your own safety you should attach your TYPHOON MyGuide securely in the vehicle using a special holder (see Quick Start Guide).

Make sure the device is sufficiently secure so that it will not become dislodged even in the event of emergency braking or a collision. Ensure that the holding device does not hinder the effectiveness of passenger safety systems (seat belt, airbag, etc.) in any way.

The road traffic regulations always have priority over the instructions given by Falk Navigator.

Avoid using the TYPHOON MyGuide while driving as much as possible, or leave this to your passenger.

If you are driving alone, use driver mode in order to be as attentive as possible to the traffic.

You should only make settings and select the destination when your vehicle is stationary. You can use the road map and the junction view to get a quick overview of position and route. Alternatively you can let your passenger navigate you through the traffic with Falk Navigator.

TYPHOON MyGuide has been developed, tested and produced with the greatest of care and in line with current safety guidelines.

Nevertheless, not every theoretically possible operational error and malfunction occurring in everyday use or in use with the GPS receiver can be ruled out.



Bear the following in mind therefore:

- ▶ When placing your GPS receiver inside a vehicle, ensure that neither the receiver, the connecting cable nor the Pocket PC interfere in any way with the proper functioning of passenger safety systems (seat belt, airbag). Keep the area in front of and over the airbag free from all objects!
- ▶ While driving concentrate on the road only and only enter data when the vehicle is stationary!
- ▶ Only follow the directions of Falk Navigator if the rules of road permit you to. Falk Navigator will also guide you safely to your destination even if you leave the suggested route.
- ▶ If your GPS receiver is magnetically attached to the roof of the vehicle, then do not travel faster than 100 km/h (62 mph). Check the magnetic securing device at regular intervals, even when travelling at low speeds because the GPS receiver could become dislodged or detached!



2 Installation of Falk Navigator

2.1 Requirements

The following specifications are required for the PC functions:

- ▶ Pentium processor 233 MHz or higher. Pentium 3 with 500 MHz is recommended
- ▶ Graphics card with a resolution of 800 x 600 pixels
- ▶ Microsoft compatible mouse / trackball / touchpad
- ▶ RAM: 64 MB. A minimum of 128 MB is recommended
- ▶ Hard disk space: between 1 and 2,5 GB depending on the map data being used.
- ▶ CD-ROM Drive
- ▶ Microsoft® Windows 98, ME, XP, Windows 2000
- ▶ Sound card
- ▶ Installed Microsoft® ActiveSync® Software. This software is supplied with the PDA and is used to synchronise data with the PC.

2.2 Installing Falk Navigator on a PC

Make sure that Microsoft® ActiveSync® has been installed. Read Chapter 3 of the TYPHOON MyGuide User's Guide for more information.

The installation program should start automatically after you have inserted the Falk-Navigator-CD. If this is not the case, start the program by double-clicking on the file **autorun.exe** in Windows Explorer.



Proceed as follows:

- » **Select target:** Here the installation program suggests a destination path. If you don't want to change the suggested path then confirm the entry by clicking **Next**.

After you have specified an installation folder, all the files for Falk Navigator will be copied to your hard drive. A program group is then created which you can conveniently open from the Windows start menu. The group contains the Falk Navigator application as well as an uninstall program.

2.3 Installation on the PDA

The Falk Navigator navigation program is installed when the desktop application is run for the first time. This is described in Chapter 10.2. In the TYPHOON MyGuide pack you will find that the software is already installed on the Compact Flash memory card so that you can start it immediately. If you delete the Compact Flash card at any point and you later want to restore the factory settings, then proceed as described in Chapter 10.2 and 10.3.



2.4 Installing Additional Maps

With Falk Navigator you can access a comprehensive choice of maps for various countries and also Europe. The maps are very up to date and contain map material, some of which is house-number accurate. The maps are based on the same material which is used in fixed built-in navigation systems.

The installation program should start automatically after you have inserted the Map CD. If this is not the case, start the program by double-clicking on the file **autorun.exe on the CD** via Windows Explorer.

The installation program automatically recognises which folder the application was installed in and by default suggests the same folder for the maps.

Finally, don't forget to complete the registration form and return it to us. You will then be able to use our free telephone support and we can also keep you up to date on the latest products and updates.

Falk Navigator is now ready to use and can guide you to your first destination.

2.5 The GPS Receiver

A GPS receiver localises the current position of your vehicle. The GPS receiver continuously receives signals from the 24 US NavStar satellites orbiting the Earth. The current position of the vehicle is determined from the data of at least three satellites. Falk Navigator displays your position on the map with an accuracy usually more precise than five metres.

The GPS receiver included with the software is a device resembling a mouse which is connected to the TYPHOON MyGuide synchronisation interface via the serial port. When connected to the TYPHOON MyGuide, the GPS receiver is powered by the car's cigarette lighter. This means that the battery for TYPHOON MyGuide is charged at the same time.



You will find further tips for setting up the GPS receiver in the Quick Start Guide and in the appendix of this User's Guide. The GPS receiver connected to your PDA must be operational in order for you continue with the installation process.



3 Quick Introduction to Falk Navigator

It is likely that you will first want to find out how to navigate to your destination with Falk Navigator while driving, before we explain Falk Navigator's individual functions.

- ▶ Firstly, make sure that the PDA is securely fastened in the vehicle.
- ▶ Next activate the GPS receiver, if you have not already done so. Your GPS receiver will start to locate your position as soon as it is turned on. It will search for position data from at least three satellites.

The first time you use your GPS receiver it can take between 2 and 15 minutes to pinpoint your location. Falk Navigator then saves your position and the next time you use the receiver it will take one to three minutes to locate your position. However you don't have to wait before you start Falk Navigator - the program will begin navigation as soon as your position has been confirmed.

Falk Navigator has been designed so that it is easy to use but also practical at the same time. Therefore the dialog boxes and windows in Falk Navigator are of two types:

- ▶ All dialog screens required for everyday use and which may possibly have to be read during the journey (by a passenger), contain large buttons and large text so that it is easy to tap buttons and enter the correct entries.
- ▶ All other dialog screens, such as settings windows, contain standard size buttons, entry fields and text. Only change the settings in these windows if the vehicle is stationary or when you are at home.



Let's go

First connect the GPS receiver to the PDA. Plug the power cord of the GPS receiver into the vehicle's cigarette lighter socket. Some cars have more than one of these sockets. You can use any 12 volt socket for the TYPHOON MyGuide.

- » Start Falk Navigator by clicking on the appropriate icon or by selecting the Falk Navigator entry in the start menu on the PDA.

Note

The first time you start Falk Navigator, you are asked to set the working language for the application. Select the desired language from the list. The program then closes. Restart Falk Navigator by clicking the icon or the entry in the start menu.

- » The Falk Navigator main menu is displayed

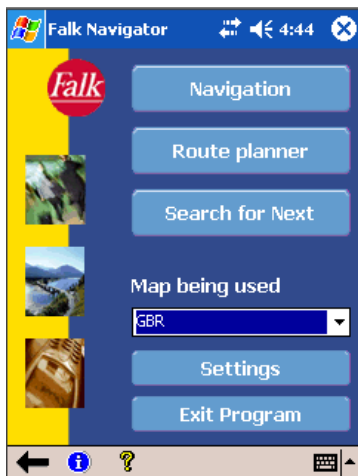


Fig. 1: The Falk Navigator main menu



- ▶▶ Tap the **Navigation** button. The screen for choosing the desired destinations (stop-off points) opens. The current GPS position is automatically entered here as the point of departure.
- ▶▶ Tap the **Add stop-off point** button. The stop-off point selection screen opens.
- ▶▶ Enter the desired destination address and confirm. Falk Navigator contains many special destinations such as restaurants, VARTA Guide hotels and orientation points e.g. churches, monuments and petrol stations. All these places can also be chosen as destinations, as can your own addresses.
- ▶▶ Tap the **Calculate** button.

Falk Navigator then calculates the route to the destination and starts the driving instructions.

You will find more details on selecting a destination in the following chapters, which cover all aspects of navigation with the PDA.

- ▶ Please note the safety advice in 1.1.

Now you can start driving and Falk Navigator will ensure you reach your destination safely and without stress.



4 General Information about Falk Navigator on a PDA

4.1 Opening Falk Navigator on a PDA

Once installation is complete you can open Falk Navigator immediately via the start menu.

The first time you start Falk Navigator, you are asked to set the working language for the application. Select the desired language from the list. The program then closes. Restart Falk Navigator by clicking the icon or the entry in the start menu.

After a few seconds the main menu is displayed.

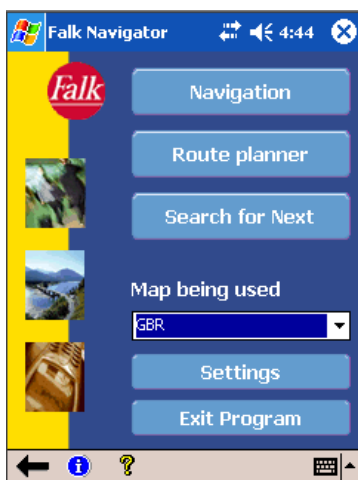


Fig. 2: Main menu

Here you can start **Navigation**, open **Route Planner** or perform a **Search for Next** for nearby addresses or sights. You will find a description of the



topic navigation in Chapter 6 and information on **Route Planner** in Chapter 7. **Search for Next** is described in Chapter 8.

If you are navigating with Falk Navigator for the first time, we recommend that you first configure the **settings** in line with your requirements. This is particularly relevant for GPS settings. The settings are described in Chapter 9.

In the main menu you specify which map you want to work with. By default, the map preinstalled on your CF memory card is shown. The introduction in Chapter 10 tells you how to create and install additional maps.

Navigation and **Route Planner** are basically structured in the same way. With the **Navigation** function the point of departure is always automatically set as the current GPS position, whereas with **Route Planner** you can manually enter the point of departure (as well as the destination). The **Search for Next** uses GPS coordinates or address details to find the nearest restaurants, cash machines or customer addresses. The choice of possibilities depends entirely on the available data records, which can be almost infinitely extended using Falk Navigator Desktop.

4.2 How to Use Falk Navigator


The following notes apply to all dialog boxes and screens shown on the PDA.

- ▶ Blue buttons are important for subsequent steps.
- ▶ Buttons that have already been pressed and that do not require any further attention are shown in grey. The results of the function are usually shown on these buttons, for example, the selected destination.
- ▶ If buttons should or have to be used during the journey, they are



displayed in a large size and in colour. All other buttons should only be used when the vehicle is stationary.

You have to confirm your entries for them to become effective, when you select destinations for example. In the row at the bottom of the screen you will then see the buttons **Apply** and **Cancel**. Tap **Apply** if you want to use the displayed result (the selected destination for example), or **Cancel** if you want to return to the previous screen with any further action.

- ▶ To return to the previous view, tap the arrow in the row at the bottom of the screen .

4.3 Using the Map

Falk Navigator contains a highly detailed map that you can use for many different tasks.

In addition to roads and towns, the map also shows rail lines, forests, urban areas, rivers and seas. Sights and your own personal addresses are of course also included on the map.

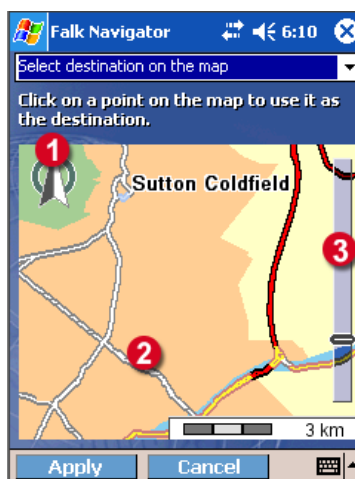


Fig. 3: Map in Falk Navigator, here as an example: the map in the destination selection screen

1.	Compass for rotating the map
2.	Tap, drag and release in the map area to move a map section around
3.	Slider for freely adjusting the magnification of the map section

- ▶ The smaller the map section shown (country - regions - towns - residential streets), the more details are displayed. The map provides you with three ways of changing the section shown.
- ▶ With the slider you can change the section and the map scale freely from the highest to the lowest zoom factor. The closer you move the slider to the bottom of the screen, the more you zoom in on the current section.

If you tap the map and move the pen, then the map follows the movement of the pen and is moved to a new position. The scale remains the same. When you lift the stylus from the screen, the map is completely redrawn.



- ▶ In some views there is also a compass which you can also use to turn the map. The map is displayed with north facing upwards by default. Sometimes it makes sense to turn the map, when navigating for example.

To do this, tap the compass and then turn the map on the screen. The entire screen is available to you when you are doing this. You don't have to touch the compass itself. North is shown on the compass by a dark compass point.

- ▶ Give the compass a short tap to reset the map to north facing upwards.

5 Selecting a Destination

In order to be able to navigate with the PDA or to plan a route, you first of all have to enter a destination and then calculate the route.

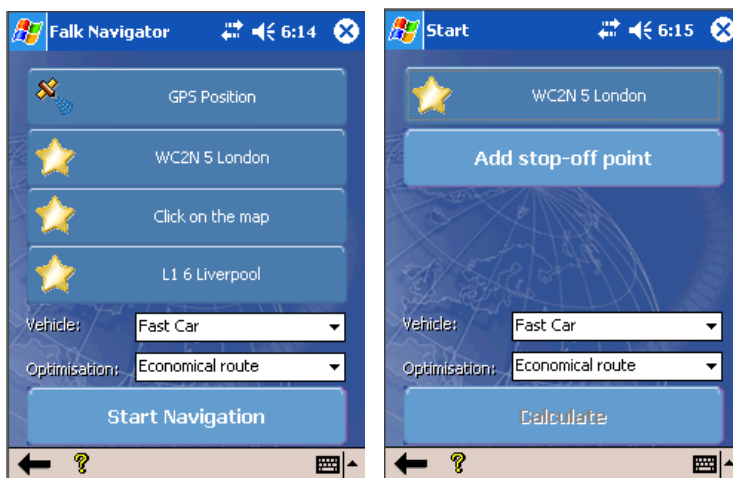


Fig. 4: Left: Stop-off point list in Navigation. Right: Stop-off point list in Route Planning. In Navigation the point of departure is always entered automatically and cannot be changed.

Tap **Add Stop-Off Point** in the navigation or route planning list of stop-off points in order to enter a destination. You can specify a destination by entering the town and the address. You can use previous entries and points on the map as destinations.

Read the following sections to find out about the different ways of specifying a destination.



5.1 You know the town and the address of the destination

Proceed as follows

- » You have to enter the **town and the address** in the boxes at the top of the screen. The lower section of the screen then contains keyboard buttons that you can use to enter the town. You may have to select the correct entry from the list.
- » To specify the destination, first enter the town in the appropriate box. As you type, Falk Navigator looks for your entry and lists the addresses found. The box for entering the address is not available until you select a town. If you want to view the various districts belonging to a town, then enter the symbol / (Shift- 7) after the name of the town (e.g. Edinburgh/).
- » Now tap the desired town in the list. The box for entering the address now becomes available.
- » Enter the name of the street and the house number. Again, as you type, Falk Navigator looks for streets and lists them. You don't usually have to enter the full street name because you receive one or more suggestions before you finish.
- » Now select the desired street and tap **Apply** to insert the destination in the list of stop-off points.

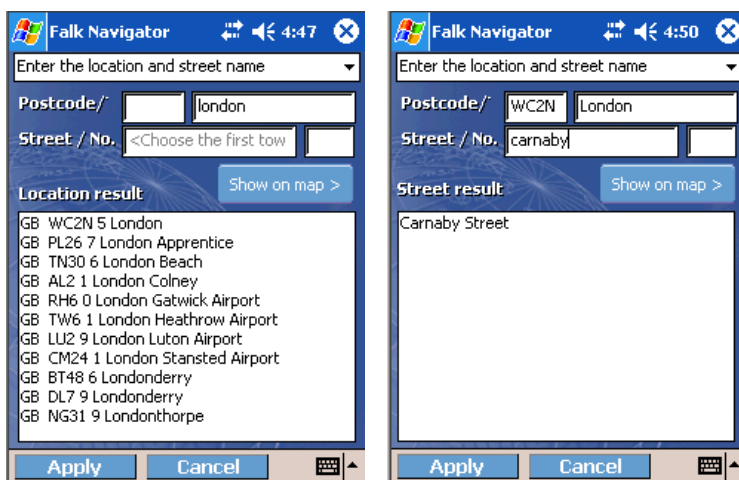


Fig. 5: Left: location selection. Right: After a town has been chosen, the address is entered.

Tip

If you want to know where the destination is located first, tap **Show on Map** to see the destination on the map. The next section describes how to select or change the destination on the map.

If you only enter a town and don't enter a street, the centre of the town in question is used as the destination. Depending on the map you are using, some streets don't have house numbers. In this case, the middle of the street is used as the destination.



You want to select a point on the map as the destination

5.2 You want to select a point on the map as the destination

Proceed as follows to select any point on the map as the destination.

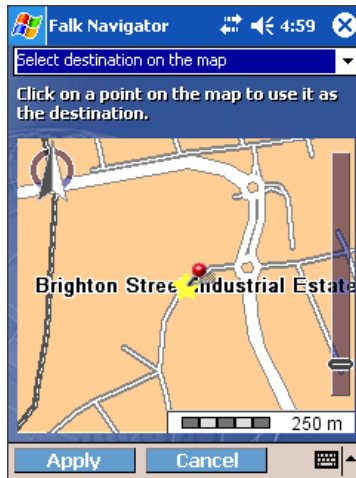


Fig. 6: Select destination on the map

- » **Select destination on the map** is selected in the drop-down list at the top of the screen. Then there is a map in the lower area of the screen. You may have to select the correct entry from the list.

Chapter 4.4 describes how to use the map. Select the desired destination by tapping the map. It is indicated on the map with a red circle. If necessary, you can adjust the map section using the slider so you can see the destination in more detail.

When you have selected the destination, tap **OK** to insert it in the list of stop-off points.

It is entered as a click-point in the list of stop-off points.



If you have selected a destination, you can switch to the map by tapping **Show on Map**. The selected street is then shown on the map. This also applies when you select a destination from the list of last destinations and favourites.

Falk Navigator now shows the map. The selected destination is displayed on the map as a red circle.

If you want to move the destination, simply tap the map and move the map to the desired position with the mouse.

5.3 You want to select an address as the destination

Proceed as follows to select an existing address as the destination.

- ▶ **Select destination from addresses** is selected in the drop-down list at the top of the screen. The lower section of the screen then contains boxes in which you can enter the town and name of the address. You may have to select the correct entry from the list.
- ▶ Select the table that contains the address. This pre-selection is necessary because Falk Navigator can manage many data sets and the number of results could be very large.
- ▶ In order to specify the destination, enter the town, the postcode or the name in the appropriate boxes. As you type, Falk Navigator looks for your entry and lists the addresses found. You can also enter any combination. This limits the list of results further and increases clarity.



You want to select an address as the destination

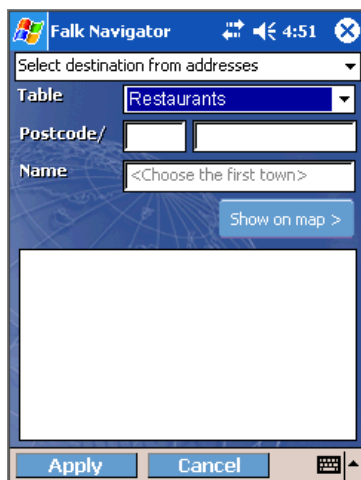


Fig. 7: Select destination from addresses

- » Tap the desired address in the list of results. Then tap **Apply** to enter the address as the destination in the list of stop-off points.

Tip

If you want to know where the destination is located first, tap **Show on Map** to see the destination on the map. The previous section describes how to select or change the destination on the map.

5.4 You want to select a favourite as the destination

You can save your home address and up to 50 other destinations as favourites in Falk Navigator. These destination can be streets, addresses or click-points, and are available at any time without any further entry. Proceed as follows to select a favourite as the destination.

- ▶ Select **destination from favourites** is selected in the drop-down list at the top of the screen. The lower section of the screen then contains a list with all your favourites. You can browse through the entries with the scroll bar if necessary.

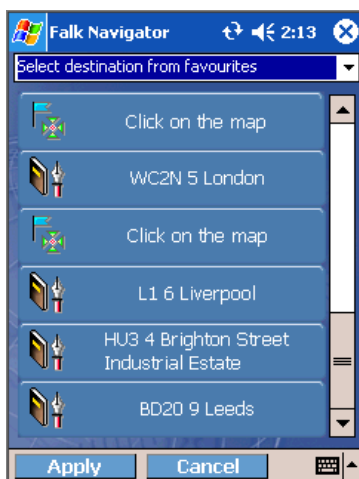


Fig. 8: Select destination from favourites

- ▶ Tap the desired entry in the list of favourites. Then tap **Apply** to enter the favourite in the list of stop-off points.

If you leave the stylus on an entry for a moment, a menu opens and you can delete the entry.



5.5 You want to select one of the last destinations as the new destination

Falk Navigator saves the last destinations so that you can access them quickly without having to search again. Proceed as follows to enter one of the last destinations as the new destination.

- ▶▶ **Select destination from previous destinations** is selected in the drop-down list at the top of the screen. The lower section of the screen then contains a list with all the previous destinations. You can browse through the entries with the scroll bar if necessary.
- ▶▶ Tap the desired entry in the list. Then tap **Apply** to enter the previous destination as the new destination in the list of stop-off points.

If you leave the stylus on an entry for a moment, a menu opens and you can delete the entry or have it shown on the map.

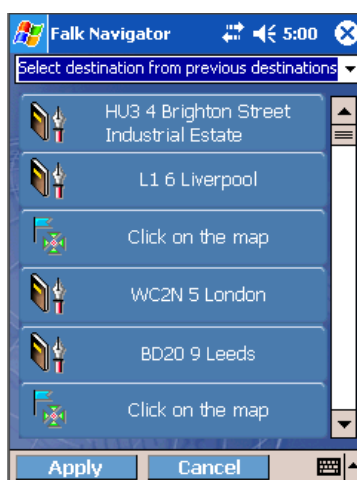


Fig. 9: Selecting a previous destination



5.6 You want to select a destination near to an address

Falk Navigator allows you to select destinations near to a particular address. This is useful if, for example, you are in a town you don't know and you want to find a nearby restaurant. Proceed as follows to select an address near to your current location as the new destination.

- ▶▶ **Select destination from next addresses** is selected in the drop-down list at the top of the screen. The lower section of the screen then contains buttons that you can use to start the radius search. Select a table from the list of available tables. Then Falk Navigator determines the nearest addresses within a specified radius around your current GPS position and shows these in the list of results. If you want to enter a new address for the radius search, tap the button **Select an address** and enter the desired address as described in Chapter 5.1. Once you have entered the desired address in the select address dialog screen, tap **Apply**. The program then automatically returns to the **Search for Next** screen and uses the entered address as the centre point for the search for next.
- ▶▶ Tap the desired address in the list of results. Then tap **Apply** to enter the address as the destination in the list of stop-off points.

6 Navigation

6.1 Entering Destinations

Tap **Navigation** in the main menu to open the list of stop-off points. Here you can enter the desired destinations and also specify how you want the route to be calculated. The current GPS position is always used as the point of departure. The GPS receiver must be connected and ready for operation. For more on this topic see Chapter 2.



Fig. 10: List of stop-off points

Now select one or more destinations, as described in Chapter 5. To do this, tap **Add Stop-Off Point**.

6.2 Editing the List of Stop-Off Points

Once you have selected a destination, you can start navigation. You can however enter more than one destination. Proceed as follows.

- ▶▶ To add more destinations, tap **Add Stop-Off Point**. The Select Destination screen opens.
- ▶▶ To delete a destination, tap the destination in the list of stop-off points. Select **Delete Stop-Off Point** on the menu that opens.
- ▶▶ To add a destination to your list of favourites, tap the destination in the list of stop-off points. Select **Add to List of Favourites** from the menu that opens.
- ▶▶ To move a destination in the list of stop-off points, tap the destination entry in the list of stop-off points. Select **Move Stop-Off Point Up** or **Move Stop-Off Point Down** from the menu that opens.



Fig. 11: List of stop-off points



- » Select the appropriate vehicle profile and the desired optimisation method. The **Route optimised according to time** usually produces the best compromise between journey duration and route length.
- » Tap **Calculate** to start navigation.

Falk Navigator now calculates a route from the current GPS position to the destination. Ensure that a GPS receiver is connected and ready for operation. After the route has been calculated, Falk Navigator switches to the navigation screen.

6.3 The Navigation Screen

All the information you need for driving is provided clearly and comprehensively in the navigation screen.



Fig. 12: Elements in the Navigation Screen

1.	Turn-off direction at next junction
2.	Left and right status display
3.	GPS signal quality
4.	Manoeuvre-countdown bar
5.	Other functions
6.	Distance to next junction
7.	Next turn-off direction
8.	Name of the road after next junction
9.	Junction view or map
10.	Manoeuvre text



The navigation screen can show a map or a junction view. The map is constantly updated with the GPS signal. Using these signals Falk Navigator shows your current location on the map. The junction view shows you a diagram of the next junction. This helps you to orient yourself. Moreover, you only have to take your eye off the road for a moment when driving.

The individual elements mean the following:

Turn-off direction at next junction	This arrow shows direction in which you have to turn off at the next junction.
Distance to next junction	This shows you how far away the next junction is. If there are less than 50 metres between your vehicle and the next junction, the word Now is shown.
Next turn-off direction	This arrow shows the direction in which you have to turn off after the next junction. This piece of information is particularly useful if you are approaching a complicated junction which requires several manoeuvres.
Left and right status display	The status displays can show the one of the following: Distance to next junction, Distance to destination, Time of arrival, Remaining drive time, Speed, Height above sea level. You can specify which information is shown in the Settings. For more on this topic see Chapter 7.
GPS signal quality	The GPS signal quality is displayed in different colours. The colours mean the following: Red – Insufficient signal quality, less than 3 satellites found. Yellow - Sufficient signal quality, less than 5 satellites. Still not enough to determine height. Green - Good signal quality, which also allows height to be calculated. At least 5 satellites found.
Manoeuvre-countdown bar	This bar visualises the distance to the next turn-off point. The shorter the bar, the closer the turn-off point. The bar only becomes active when the next junction is closer than 600 m within an urban area and closer than 3 km in suburban areas.

Tab. 1: Elements in the Navigation Screen



Junction view or map	If you tap within this area of the navigation screen, you can switch between the junction view and map view.
Name of the road after next junction	Name of the road that must be turned onto next. This road is shown directly above the junction or map view.
Manoeuvre text	The next driving instruction is shown here. If the voice alert is activated then you will hear an audio form of these instructions at regular intervals.
Other functions	The other functions in the toolbar such as day and night mode are described in Chapter 6.5.

Tab. 1: Elements in the Navigation Screen

6.4 Map and Junction View

It is a matter of personal preference whether you choose to use the map view or the junction view for navigation. The junction view is static and is therefore less distracting when driving. The map view on the other hand shows you your current location. This view is probably better suited for passengers therefore.

The current GPS position is indicated on the map by a red circle. Your direction of travel is represented by an arrow at this circle. The arrow is generally in the middle of the screen, whereas the map moves underneath.

The course of the route is highlighted in blue on the map. In this way, you can easily see whether you are still on course. If you have missed a junction, don't worry. Falk Navigator will calculate a new route in a matter of seconds. You will definitely reach your destination.

You can change the size of the map section incrementally using your PDA's scroll button. If you want to enlarge the map section, keep pressing your PDA's scroll button downwards until you reach the desired zoom level. If you want to reduce the map section, keep pressing your PDA's scroll button upwards until you reach the desired zoom level.

If you want to set the default map section size, press the scroll button to the left or right. The default size of the map section depends on the current speed.

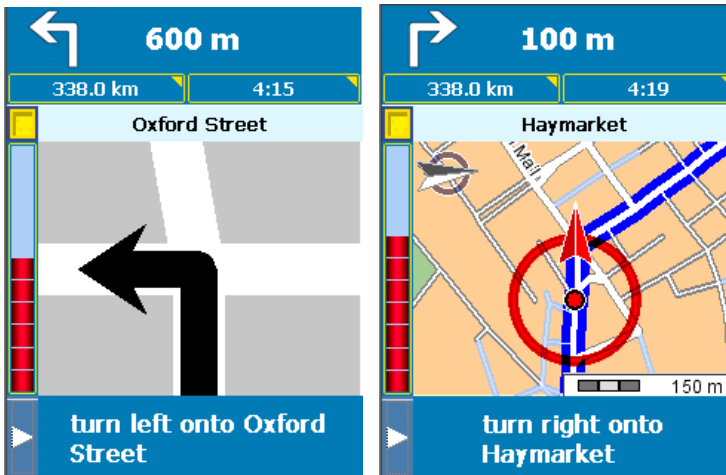


Fig. 13: Differences between the junction view and the map view

6.5 Other Functions

There is also a menu that you can use to set other navigation functions. To open this menu, tap the arrow in the bottom left corner. These functions give you a quick overview but are not really necessary for actual navigation.

If you don't select a function, the menu automatically closes after four seconds and the navigation screen reopens.

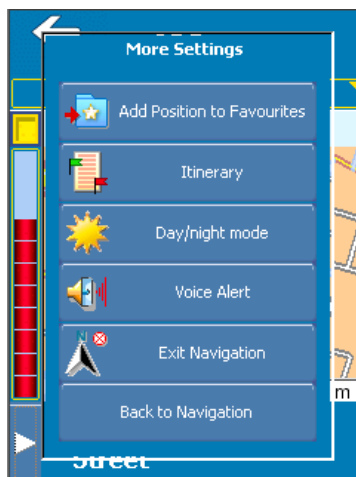


Fig. 14: Other navigation functions

Select **Add Position to Favourites** if you want to include your current position in your list of favourites.

To show the **itinerary**, tap the corresponding button. The itinerary for the calculated route is displayed.

There is a description of the complete route above the current point on route. Length and route duration are given here.

You can use the slider to change the size of the map section and the compass to change the direction of the map. By tapping and dragging the screen, you can also select the map section without changing the scale.



Fig. 15: Itinerary for navigation

Browse through the itinerary by tapping the two buttons left and right of the current point on route. Then either the next or the previous point on route is shown. At the same time, the map section focuses on this point on route.

If you want to see the complete route, tap the arrow symbol next to the description of the complete route.

Tap the arrow to return to the navigation screen.

With the **Day / Night Mode** button you can adjust the colours used at the corresponding times of the day. If you are driving at night, select night mode. The brightness of the PDA screen is reduced so that you are not disturbed or distracted.

To switch **voice alert** on or off, tap the corresponding button.

If you don't need the PDA for navigation any more, tap **Exit Navigation**. Falk Navigator's main screen opens.

Tap **Back to Navigation** to return immediately to the navigation screen.

7 Route Planner

The basic difference between Route Planner and Navigation is that the former also includes the point of departure in addition to the destinations. In this way, you can calculate routes between any points and specify the desired route before the trip.

Falk Navigator also provides you with this function on your PDA. Tap **Route Planner** in the main menu.

7.1 Entering Destinations

Tap **Route Planner** in the main menu to open the list of stop-off points. Here you can enter the desired destinations. You can also set your driving style and how you want to optimise your route.



Fig. 16: Route planner stop-off point list



Now select a point of departure and destination, as described in Chapter 5. To do this, tap **Add Stop-Off Point**.

7.2 Editing the List of Stop-Off Points

Once you have selected a point of departure and a destination, you can start route calculation. You can edit the list of stop-off points in a few different ways.

- » To add more destinations, tap **Add Stop-Off Point**. The Select Destination screen opens.
- » To delete a destination, tap the destination in the list of stop-off points. Select **Delete Stop-Off Point** on the menu that opens.
- » To add a destination to your list of favourites, tap the destination in the list of stop-off points. Select **Add to List of Favourites** from the menu that opens.
- » To change the sequence of the destinations in the list of stop-off points, tap the destination in the list of stop-off points. Select **Move Stop-Off Point Up** or **Move Stop-Off Point Down** from the menu that opens.



Fig. 17: Route planner stop-off point list

- ▶▶ Select the appropriate vehicle profile or your driving style. Set how you want to optimise the route. The **route optimised according to time** usually produces the best compromise between journey duration and route length.
- ▶▶ Tap **Calculate** to calculate a route and to start navigation.

Falk Navigator now calculates a route between the specified stop-off points. After the route has been calculated, Falk Navigator switches to the routing screen.

7.3 The Routing Screen

The routing screen shows the calculated route on a map. One stop-off point at a time is shown in the lower area. There is a description of the complete route above the current point on route. Length and route duration are given here.



Fig. 18: Routing screen with the calculated route and itinerary

You can use the slider to change the size of the map section and the compass to change the direction of the map. By tapping and dragging the screen, you can also select the map section without changing the scale.

Browse through the itinerary by tapping the two buttons left and right of the current point on route. Then either the next or the previous point on route is shown. At the same time, the map section focuses on this point on route.

If you want to see the complete route, tap the arrow symbol next to the description of the complete route.

8 Search for Next

Falk Navigator allows you to select destinations near to a specified position. This is useful if you are sitting in a hotel in a town you don't know and you want to find restaurants nearby. Proceed as follows to find an address near a certain position.

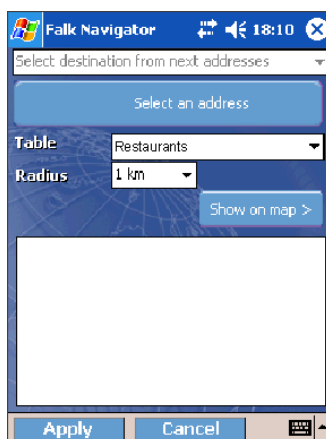


Fig. 19: Search for Next

- » First determine the point of departure. (as described in Chapter 5). You can only enter a town and street.
- » Select a table from the list of available tables. Then Falk Navigator determines the nearest addresses within the specified radius and shows these in the list of results.

Tip

If you want to know where the destination is located first, tap **Show on Map** to see the destination on the map.



If you want to select a new centre point for the radius search, tap the button **Select an address** and enter the desired address as described in Chapter 5.1. Once you have entered the desired address in the select address dialog screen, tap **Apply**. The program then automatically returns to the **Search for Next** screen and uses the entered address as the centre point for the search for next.

If you want to see the nearest addresses in another table, just select the desired table from the list. The result is updated immediately.

9 Settings

Falk Navigator provides you with various settings so that you can customise the program to your needs.

9.1 Map

In the Map tab you can make the following settings:

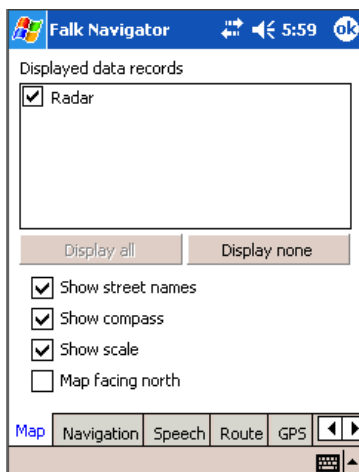


Fig. 20: Map settings

The list of **Displayed data records** lists which data you want to be shown on the map. All data sets that were supplied with the program or that you installed afterwards are listed here.

You can change the selection for all data sets very quickly with the buttons **Display all** and **Display none**.

The remainder of the options affect the display on the map. If you switch off the **Show street names** button, roads are no longer labelled on the

map. If you don't need to turn the map, you can switch off the **compass**. Similarly can use the **Show Scale** function or remove it from the map.

9.2 Navigation

In the **Navigation** tab you can make the following settings:



Fig. 21: Navigation settings

In the **Displayed Elements** area you can specify which elements are visible in the navigation screen (see Chapter 6.3).

If the **Magnification dependent on speed** check box is selected, the scale, and therefore also the map section shown, is determined according to the speed. This option is selected by default. If you want to deactivate this option you can clear the box by clicking.

In the **Status display** area you can specify which information you want to see in the two status indicators in the navigation screen.

» Tap the drop-down list whose content you want to change.

A list box opens.

» Select the desired content.

You will see an example of the selected content.

9.3 Voice Alert

If you want to change the volume of the voice alert, you can make the relevant settings in the **Sound** tab.

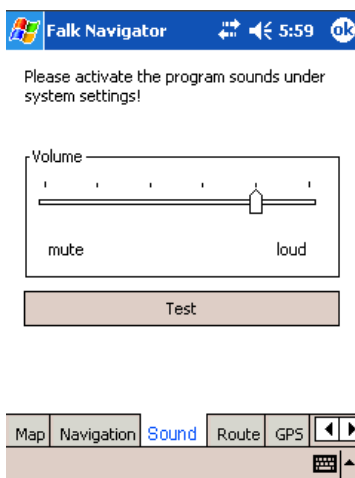


Fig. 22: Voice alert settings

Set the **volume** so that you can hear the navigation instructions in the car.

We recommend connecting an external speaker or using an earphone.



9.4 Route

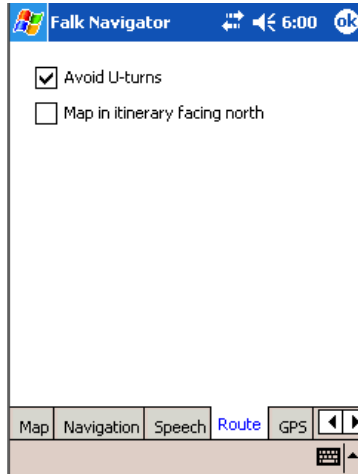


Fig. 23: Route settings

Sometimes the shortest route is one that requires you to turn around after a junction. If you don't want to use these manoeuvres, select **Avoid U-turns**.

If you want the map to always face north in the itinerary, tick the checkbox: **Map in itinerary facing north**.

9.5 GPS

Here you can configure the connection between your PDA and the GPS receiver.

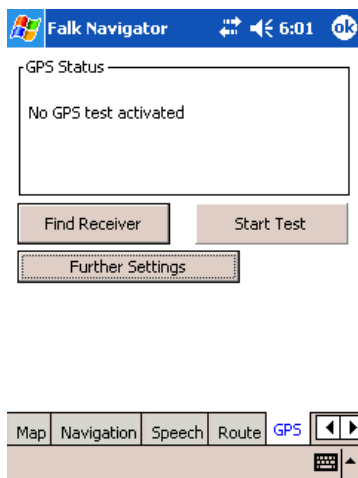


Fig. 24: GPS receiver settings

We recommend you let the receiver be detected automatically. Ensure that the GPS receiver is connected to your PDA by cable. Then tap **Find Receiver**.

If the search is successful, the required parameters to control the GPS receiver are automatically entered.

If you want to see the parameters or change them, tap **Further Settings...** Only experienced users should make changes here.

If the receiver search was successful, it is recommended that you test the connection to the GPS receiver. To do this, tap **Start Test**.

If the test is successful, the GPS data are displayed in the GPS Status area.



9.6 Specifying a Home Address

You can use your **home address** as the destination of navigation or route planning. You can specify it in the settings. It will then appear as the first entry in your list of favourites. In this way, you can quickly enter a route to take you home.

Tap **Specify New Address** to select a home address or to change existing addresses. Here the select destination process is used, which you will already know from Chapter 5.



Fig. 25: Specify Home Address

9.7 Setting the Language and Unit of Measurement

If you want to change the language of the program interface later on you can choose another of the installed languages under **Settings**. Changing the language affects the program itself and the voice alerts. In addition you can also change the unit of measurement for the map scale, as long as there is more than one unit of measurement installed for the chosen language.

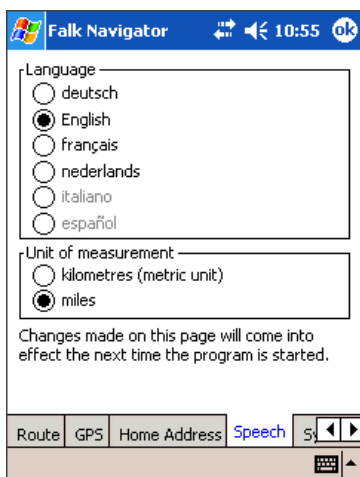


Fig. 26: Language and Unit of Measurement

Note

The new language setting will only come into effect after the software has been restarted.



9.8 Device and Version Information

If you are looking for help on our website or from our hotline, it is helpful if you have the information in the two tabs **PDA** and **Version** to hand. The tabs appear as in the following illustration:

The image shows two screenshots of the Falk Navigator interface. The left screenshot displays the 'PDA' tab with the following information:

PDA	PocketPC 2003, StrongARM
OEM Info	ASUS
OS	WinCE 4.20 Build 0
Memory	28.55MB (57% in use)
Display	240x320*16bpp, Switch Off 60s
Sounds	Deactivated
Power	Battery 85%, Switch Off 180s

At the bottom, there are tabs for GPS, Home Address, Language, and System (selected). The right screenshot displays the 'Version' tab with the following information:

Program Information	
Version	2.0.0.24 (Release (NA))
Build	Jan 20 2004, 11:52:34
Ini	{Flash Disk}\Navigator 2004\Falk
Map Information	
Name	{Storage Card}\tb-navi\GBR.tns
Date	05/2011
Version	3.1

At the bottom, there are tabs for Language, System, and Version (selected).

Fig. 27: Information on the PDA and the version of Falk Navigator



10 Falk Navigator Desktop

This chapter describes the functions of Falk Navigator that can be used in conjunction with a computer. In order to synchronise with your PDA, Microsoft® ActiveSync® must be installed.

10.1 The Main Menu

You can access all functions from the main menu.



Fig. 28: Main menu (To open: Click the **Falk Navigator** button or click the Windows **Start** menu and select **Programs/Falk/Falk Navigator**)



The individual functions are:

Load Map and Addresses onto PDA

With this menu command you can install maps on the PDA. You can see all available maps (those installed as standard and those purchased later) in a drop-down list.

This command also allows you to synchronise destinations with your PDA. Select the data sets (from Outlook for example) that you want to be available as destinations on the PDA.

The data are loaded directly onto the PDA. Due to the amount of data, we generally recommend installing them on a memory card. Memory cards are available for PDA devices in specialist stores.

Create New Map

Using the available complete maps, you can create your own maps that include only those areas that you need. In this way you save valuable memory on your PDA.

The new map contains all the selected areas in the highest resolution right down to streets and house numbers. However these areas are still embedded in the complete map, which contains at least motorways and trunk roads for all other areas. This means you can comfortably travel between areas.

Route Planner

With this menu command you plan routes on your computer without starting navigation. This means you can first plan the route easily and then have alternatives shown.



Personal Addresses

Use the contacts in your Outlook Address Book as destinations on your PDA. Here you can also record more addresses with house number accuracy and then synchronise them with Outlook and your PDA.

Exit Program

If you want to exit Falk Navigator, click **Exit Program**.

The main menu also shows you version information in the bottom left of the window.

If you need additional navigation maps for Falk Navigator, you can access the Falk Shop from the main menu by simply clicking the blue text links. All available maps are listed in the Falk Shop.

The Falk Navigator menu contains other entries such as the function for installing the program on your PDA and information on how to contact the hotline.

10.2 Installing the Software on the PDA

When you start the desktop application for the first time, the Installation wizard starts automatically. The wizard helps you install Falk Navigator on your PDA.

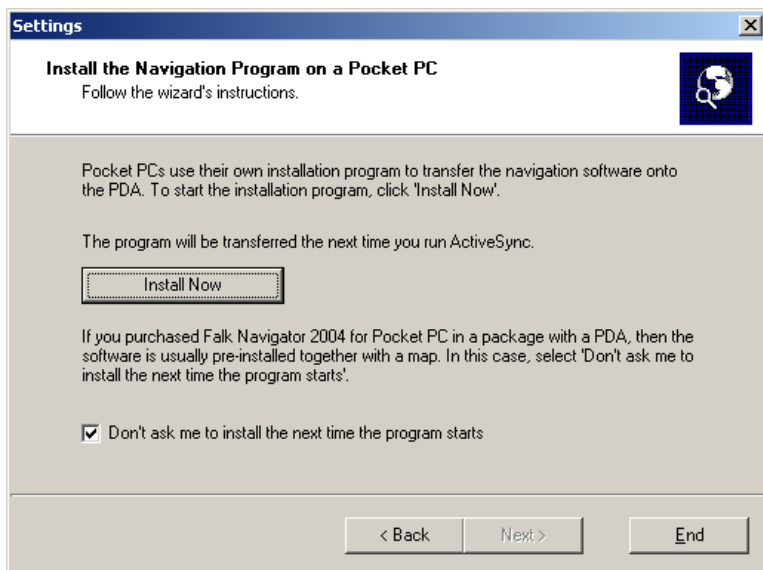


Fig. 29: Selecting an image for data sets

Click **Install Now** to install Falk Navigator on your PDA. You can also start installation any time from the File menu of the Falk Navigator Desktop.

If you purchased Falk Navigator in a package with a PDA, the software is usually pre-installed together with a map. In this case, select **Don't ask me to install.....**

10.3 Load Map and Addresses onto PDA

This chapter describes in detail how to load maps and additional data sets as destinations onto the PDA. If you click **Load Map onto PDA**, the following wizard opens:

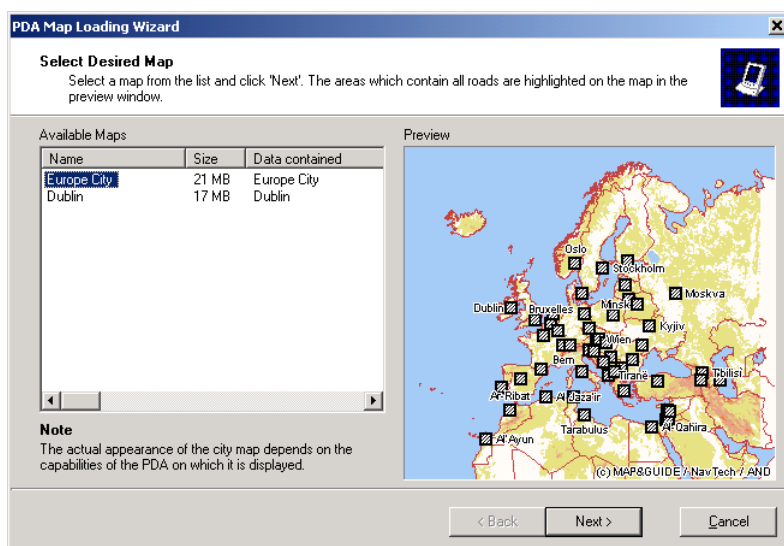


Fig. 30: Selecting the map (To open: Click **Load Map to PDA**)

All currently available maps are listed here. The map originally supplied is listed first, then any maps you created yourself or maps that you have purchased since.

If no map appears in the preview window, click an entry in the list on the left to see the preview.



Proceed as follows:

- » If you want to install a map on the PDA, select an entry from the list and then click **Next**.
- » You also have the option of leaving maps already on the PDA unchanged and only changing the data sets. To do this click **Next**. Falk Navigator now informs you that you have not selected a map. Confirm this message by clicking **Yes**.

The window for selecting additional data sets opens.

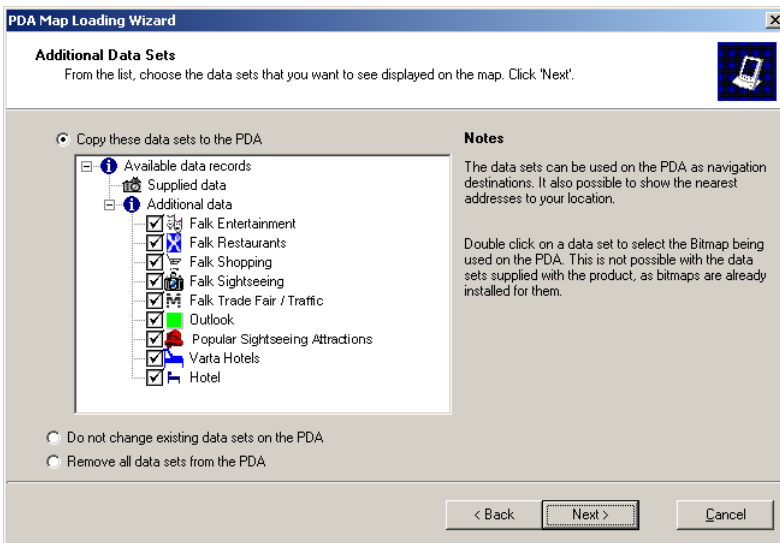


Fig. 31: Selecting additional data sets

Select the data sets that you want to use as destinations on the PDA. To do this, select the check box to the left of the description. For the data in the **Additional Data** area you can also specify which image you want to use later to identify the destinations on the PDA.

Double-click an entry in the list to open a window containing all the available images (bitmaps). Ideally these should have a height and width of 16 pixels. Images of different sizes are automatically converted.

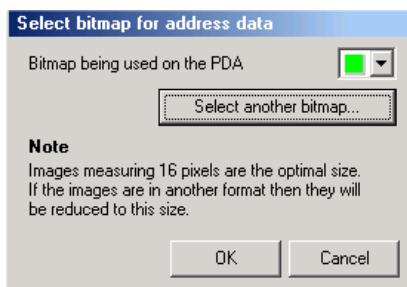


Fig. 32: Selecting an image for data sets

Select an image from the list, or click **Select another bitmap...** to choose from more images. In the next dialog box you can select any image (BMP format). It then immediately appears in the list.

You can also leave the existing data sets on the PDA unchanged. To do this, select **Do not change existing data sets on the PDA**. This means any selection made in the list is disregarded.

If you want to **Remove all data sets from the PDA**, select the corresponding option instead. Any selection made in the list is also disregarded here.

Click **Next**. Once you have selected data sets for copying to your PDA, these are then converted into a format that Falk Navigator can use. This can take a few minutes. A progress bar indicates how much of the process is complete.

- Now insert the PDA into the docking station. This must be connected to the computer.

If you want to copy maps or data sets to the PDA or delete them from the PDA, the following window opens. Here you can select where you want to



save the map and the data sets. If you have a memory card in the PDA, Falk Navigator Desktop automatically suggests this as the save location. All available PC memory cards are also listed, as long as at least one useable memory card has been inserted.

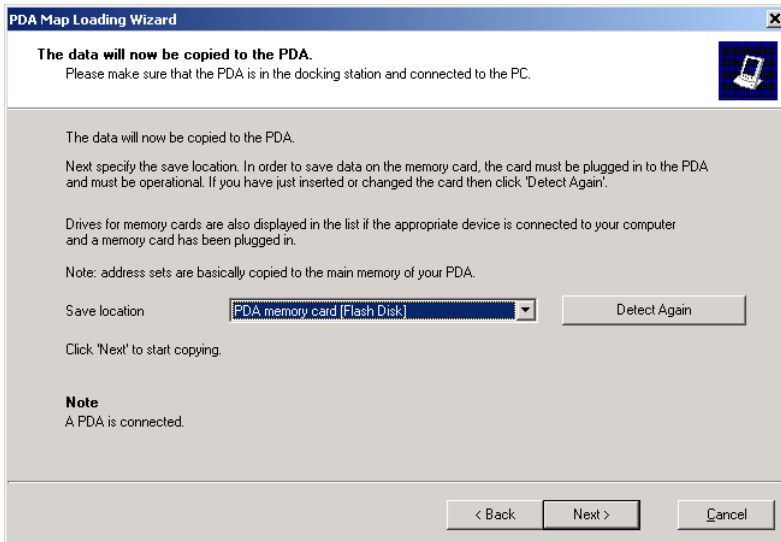


Fig. 33: Selecting the save location on the PDA

If you want to switch memory card, or if you hadn't yet inserted the PDA into the docking station, then click **Detect Again**. Falk Navigator now searches for available memory cards again.

After you select the save location, click **Next**. Copying now starts. This process can take a few minutes depending on the size of the card. A progress bar indicates how much of the process is complete.

During copying it is important that you do not take the PDA out of the docking station and that you do not remove the memory card. Otherwise the map cannot be copied and data could be lost from the memory card.



After copying has been completed, a status message informs you that the process has been completed successfully and that you can start using the map immediately.

10.4 Create New Map

If you purchased Falk Navigator in a package with a PDA, the map is usually pre-installed on the PDA's memory card. There is usually only a little available memory left on the memory card with the complete map. Because you generally only move around certain areas of a country, you usually only need a small map which shows these areas in high resolution.

The same way as you would only buy a city map of a city that you wanted to visit. An interurban map is usually enough for all other regions.

Falk Navigator applies this principle perfectly on the PDA. By creating your own map, you save valuable memory on your PDA. Routes are also calculated more quickly as the number of available roads is comparably small.



Selecting towns and personalised sections

Click the **Create New Map** button in the main menu. After the Welcome message, a window opens with a map on the right.

There are three tabs on the left.

The **Towns** tab contains an alphabetical list of all towns with over 20,000 inhabitants. Click the name of the town to see it on the map. To select a town just click the check box to the left of the name. A check mark appears in the box.

You can select all towns, clear the selection of all towns, as well as reverse selection using the three buttons above the list. This function is handy if you want to select all the towns except a certain few. Select the towns that you don't want and then click Reverse Selection.

The **Regions** tab contains administrative areas (e.g. federal states, counties) and special regions. The list is simpler in design than the list of towns but works in exactly the same way. The buttons above the list are also the same as with towns.

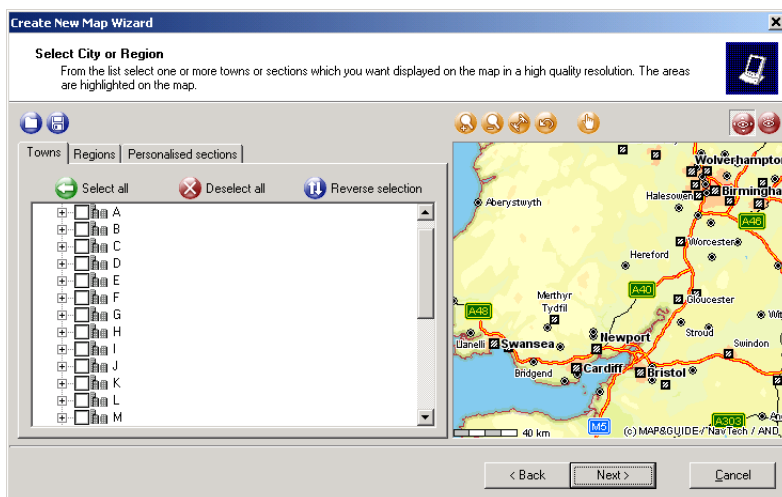


Fig. 34: Selecting towns or regions

The **Personalised Sections** tab doesn't contain any entries at the start. Select a section on the map using the mouse and then click **Apply**. An entry with the name **Personalised Section** followed by a consecutive number is added to the list.

You can change the automatically assigned name by right-clicking the name and then selecting **Rename**. A dialog box opens where you can change the name.

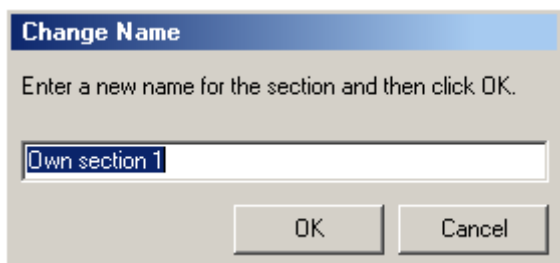


Fig. 35: Changing the names of your personalised sections

This name later appears in the list of included data when the map is selected for downloading to the PDA (see Chapter 10.2).

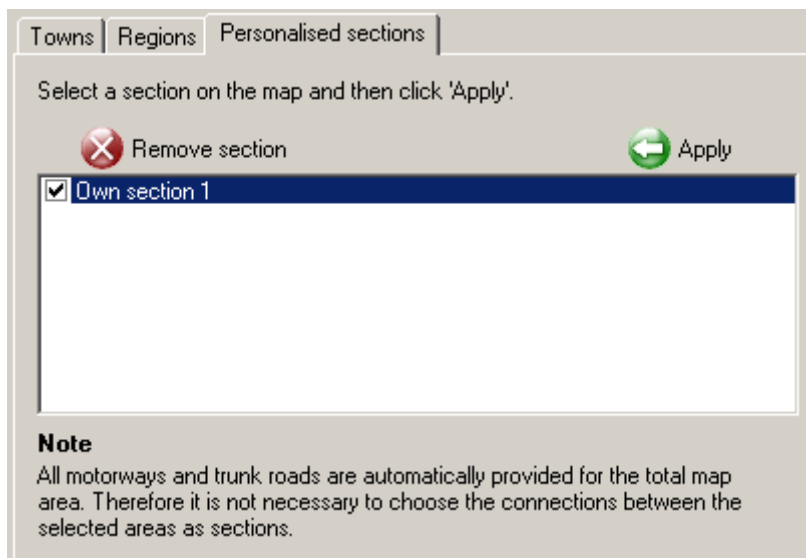


Fig. 36: Selecting your personalised sections

All selected towns, regions or personalised sections are later included on the map in high resolution with all roads, down to house number level.



Motorways and trunk roads are included for all other areas so that you can navigate between the selected areas without any problems.



The map on the right shows each selected area. You can change the displayed section with the buttons above the map. You can control whether the map is shown in normal or preview mode using the two buttons to the right above the map. In normal mode selected towns or regions are only outlined in the selected area. In preview mode only those areas that will later appear in high resolution on the map are drawn. All other areas are hidden.



You can save your map design or earlier designs using the two buttons to the left above the list. A map is not generated yet but the towns and sections that you have selected are saved so that you can easily add more sections to your map later.

Note

Roads and house numbers are of course only available for the maps supplied or those you purchased since. If you select areas outside of the map, these are added to the list but only motorways and trunks are available for these areas.

After you have selected all the sections and towns that you want, click **Next**.



Entering map name and final check

In the next window enter the name of the map. This is the name that Falk Navigator will use on the PDA. Please note that there is only limited space available for the name on the PDA. Short, meaningful names are therefore recommended.

Then click **Next**. In the next window you can check again whether all entries are correct. If you want to make changes, just click **Back** to return to the page where you either selected towns or entered the map name.

Click **Next** to make Falk Navigator Desktop generate the map.

Generating the map

The process of map generation can take some time. Wait until the process has finished.

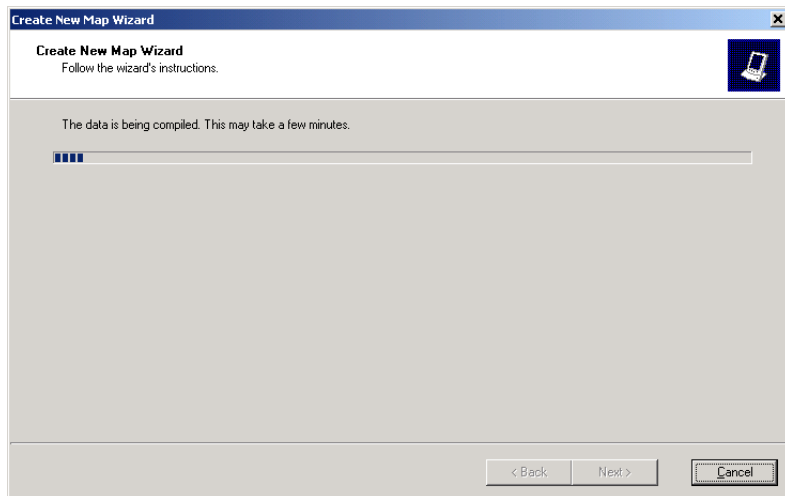


Fig. 37: Generating the map

After the process has been successfully completed, you can load the map onto the PDA. To find out how, see Chapter 10.2.

10.5 Route Planner

Falk Navigator Desktop contains a route planner with which you can plan your trips on your computer. To do this, click **Route Planner** in the main menu.

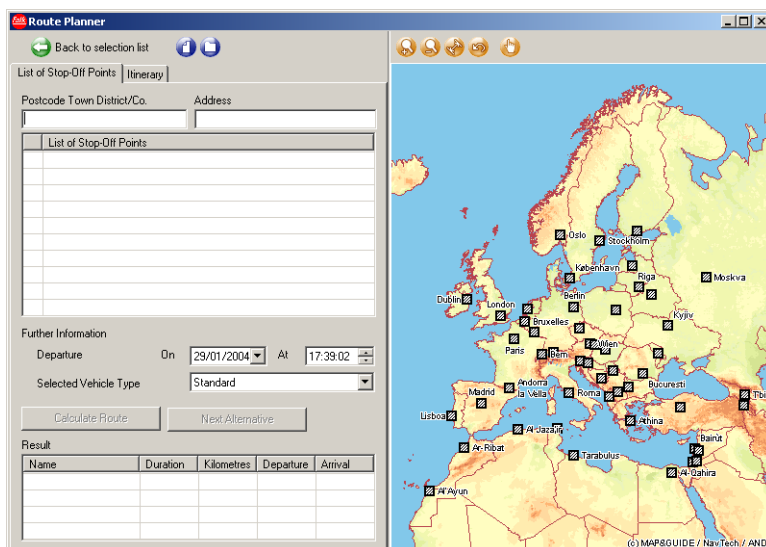


Fig. 38: Route Planner

The routing window opens. This window contains the standard Windows functions such as minimize, restore and close.

Creating a list of stop-off points

The area for inputting stop-off points is on the left of the window. The map is on the right. You can resize the two areas using the mouse.

To specify the individual stop-off points of your journey, enter the name of the location. To refine your search, you can also enter the postcode, the road and the house number in the corresponding boxes at the top of the area. You don't have to enter all values. Falk Navigator uses all available entries for the search and shows you a list of search results as you type.

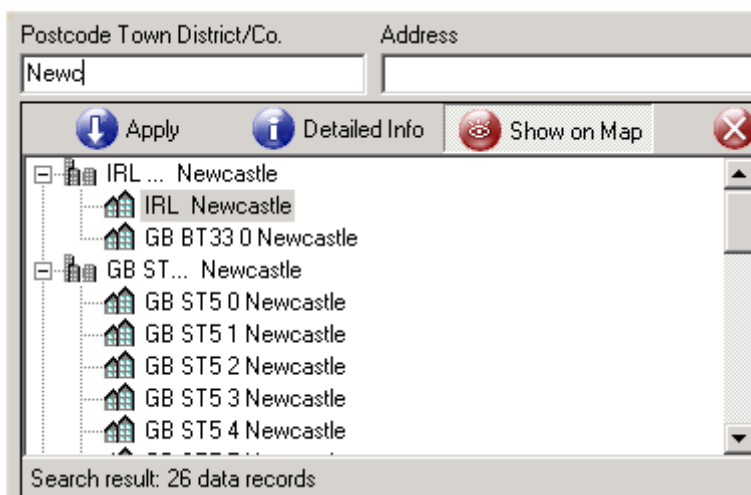


Fig. 39: Search as you type

Select the desired entry from the list. Click **Apply** to insert the destination in the list of stop-off points. Click **Detailed Info** to see additional information on the selected location or address. When the **Show on Map** button is pressed in, the location currently selected is shown on the map. Click the Close button on the right of the list to exit the search without selecting any destination.



It includes even the smallest of districts. Falk Navigator also has a street index for almost every town in Great Britain/Ireland and even a house number index for many towns.

By entering special search terms, you can quickly access the wide range of location information and address data available in Falk Navigator. First enter the town that you want to search, then a space followed by a plus sign. Directly after the plus sign enter the search term.

Examples:

- ▶ If you want to find all hotels in Dublin, enter "**Dublin +Hotel**".
- ▶ If you want to find only Best Western hotels in Dublin, enter "**Dublin +Best**".
- ▶ If you enter "**Glasgow +station**", Glasgow train station is returned.
- ▶ If you synchronised your Outlook Address Book with Falk Navigator (to find out how, see Chapter 10.5), you can select the destination (located in York for example) by entering "**York +Outlook**" or "**York +Address**".

Note

So that Falk Navigator can recognise that a special search term has been entered, you must enter the term directly after the plus sign. There cannot be a space between the two.

Search terms themselves can include spaces. So that Falk Navigator does not incorrectly interpret these entries however, you must put them between inverted commas, for example, Dublin +"Best Western".



You can create a new stop-off point, load previous stop-off points or save the current stop-off point using the buttons (from left to right) on the top of the screen. These lists don't have to be complete. For example, you can save your location at home or in the office so that you can access it more quickly.



The buttons are only visible if the associated function is available. You can't save a list of stop-off points if the list doesn't contain any entries for example.

Map window

You can use the map with the mouse or the buttons at the top. The smaller the scale, the more information is visible.

You can select map sections yourself using the mouse. To do this, hold down the mouse button and drag a frame across the desired area. The selected area is then immediately enlarged and replaced by a detailed map. If you keep SHIFT pressed at the same time, you can also move the map. The map is not enlarged.



You can also switch on this move function using the right toolbar button above the map. If it is pressed in, you can move the map window with the mouse. If it is not pressed in, you can enlarge sections with the mouse.

Right-click

If you right-click in the map, a short-cut menu with the available map functions opens.

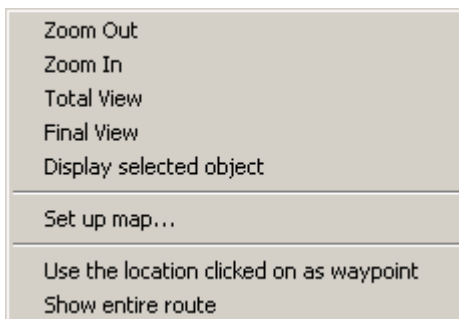


Fig. 40: Map right-click short-cut menu

- ▶ The top functions are for navigating the map. You can **zoom** the map section **in** or **out**, show the **whole map** or see the **final view**.
- ▶ The **Set up map** command allows you to specify which elements are visible on the map. The settings relating to map data and visibility allow you to select data shown on the map in the list.

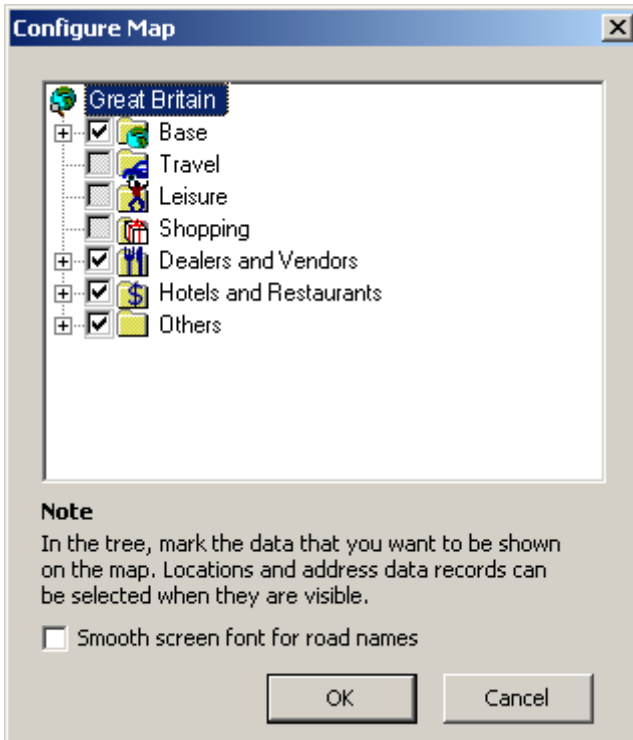


Fig. 41: Configuring the map

- ▶ You can hide the individual data areas on the map (or show them again) by clicking the desired level and then selecting or clearing the check box below the list.
- ▶ The Font Smoothing function is only available under Windows 95, Windows 98 (also SE/ZA) and Windows ME operating systems. If this function is active, slanted street names are easier to read.
- ▶ If you want to use the **click-point as the destination**, then select the corresponding command in the menu.



Falk Navigator then inserts this spot as a stop-off point and derives its description from the nearest location or street.

Calculating a route

Once you have entered two stop-off points, you can have the **route calculated**. If you have entered four or more stop-off points, you can also optimise the route in order to minimise the drive time between points.

Falk Navigator Desktop provides you with a selection of different vehicle profiles so that you can calculate the best route possible. Select the profile that best matches your vehicle.

After route calculation, you can read the result in the list at the bottom of the screen. The calculated route is shown in colour on the map.


Result				
Name	Duration	Kilometres	Departure	Arrival
 Standard route	03:31	347,8	15:41	19:13

Fig. 42: Result of route calculation

If you don't like the calculated route, you can create up to three alternative routes. To do this, click **Next Alternative**. The alternative routes are then also included in the list of results. Click one of the routes to see it on the map. The colour symbol on the left of the list indicates the colour of the calculated route on the map.



Itinerary

You can switch between the **list of stop-off points** and the **itinerary** using the tabs at the top of the screen. Of course, an itinerary is only available if you have first calculated a route.

The itinerary contains all the important driving instructions and details on the direction that you have to travel in. Distance from the point of departure and the calculated time are also given.

The upper area of the itinerary provides you with an overview of the routes as well. Click a route to switch to the associated itinerary. The route is then also shown on the map.

10.6 Personal Addresses

A simple and easy-to-use synchronisation function allows you to use contacts in your Outlook Address Book as destinations in Falk Navigator. You can also add more details to your addresses and then synchronise these again with Outlook. Click **Outlook Addresses** in the main menu to start the wizard.

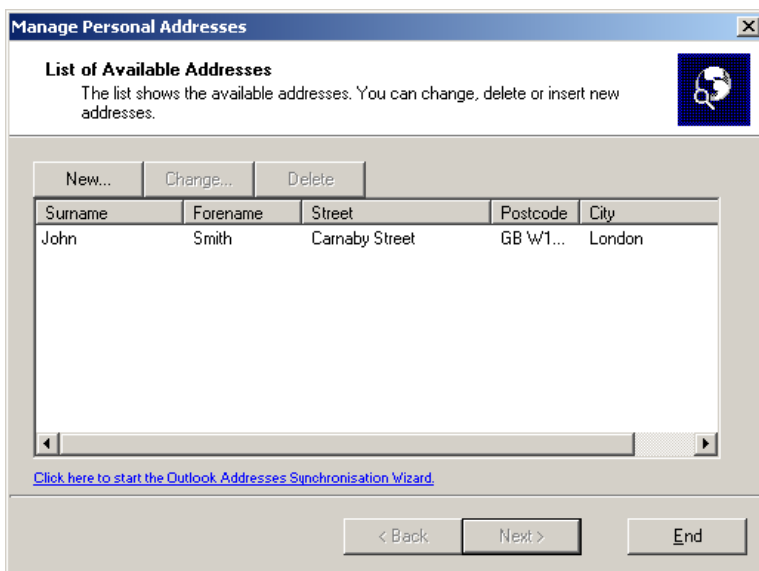


Fig. 43: Manage Personal Addresses Wizard

The list shows all addresses that are currently available as destinations. You can record new destinations, and change or delete existing ones. You can also start Outlook synchronisation from the wizard.

Creating or changing addresses

This is how to create a new destination or change an existing one:

- » In the wizard click either **New** or **Change**. A window opens in which you can enter general data.
- » Enter general data such as surname, first name, telephone number and e-mail address. Click **Next**. The window where you enter the address opens.
- » Enter the address as completely as possible including street and house number. Possible results are found as you type and displayed in a window.

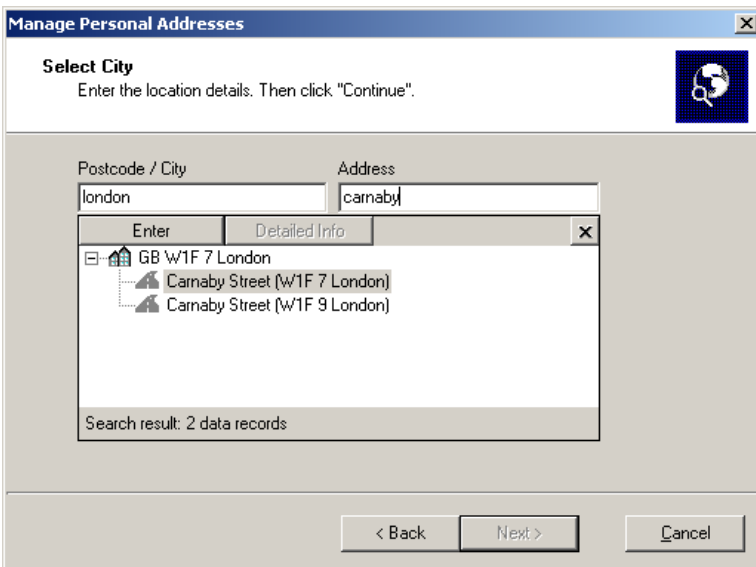


Fig. 44: Entering the address

- » Select the correct entry from the list.
- » Click **Apply** and then **Next**.



Now your full details are displayed in a window once again. You can also see where the address is located on a section of map. If all the data are correct, click **Next**. Otherwise change the details by clicking **Back**. The new or changed address is now shown in the list.

Synchronising addresses with Outlook

Before Falk Navigator can use the contacts in your Outlook Address Book as destinations, you must first import the contacts.

Proceed as follows:

- ▶▶ Synchronise changed addresses with Outlook and import Outlook contacts for Falk Navigator. These two things are done together in one step. If Falk Navigator detects that addresses have been created or changed, you will be asked whether you want to add these contacts to your address book in Outlook and synchronise them.

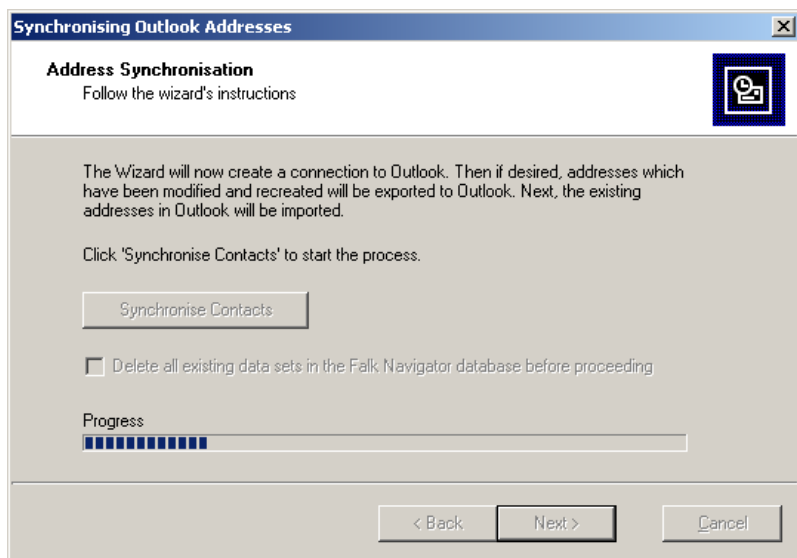


Fig. 45: Synchronising Outlook Address Book

Click **Synchronise Contacts**. Importing starts. You can also decide whether you want the Falk Navigator database to be deleted before importing; this is not usually necessary. Data records that already exist in Falk Navigator are only synchronised; they are not imported a second time.

You can also skip this step by immediately clicking **Next**; no data will be imported from Outlook.

- » Assigning the address to co-ordinates. This process is also called geocoding. Geocoding involves trying to determine a unique geographical co-ordinate from the address details using the Falk Navigator location database. Only then can Falk Navigator use the data as destinations. Click **Start Geocoding**.

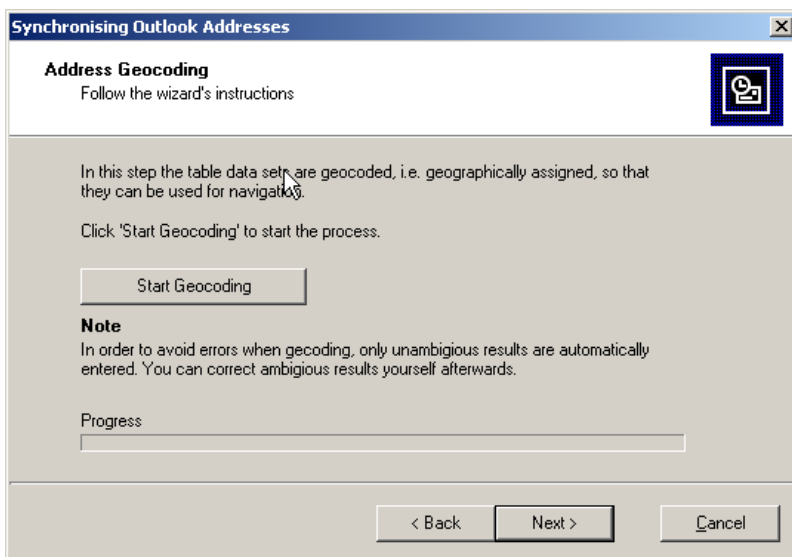


Fig. 46: Geocoding the addresses

The co-ordinate is only automatically assigned if the result is unambiguous. Data records that have already been geocoded are not reassigned a co-ordinate.

You can also skip this step by immediately clicking **Next**; no data will be geographically assigned.

After you have performed these steps, the list of addresses is shown again.



11 Glossary

ActiveSync

A program that manages synchronisation between the Pocket PC and the desktop computer and/or a server.

Alternative route

Falk Navigator also allows you to calculate alternative routes based on your specific criteria. The alternative route is shown on the map in green.

Drag-and-drop

Using this method you can change the order of entries in a list for example.

- » Left-click the element that you want to move and hold down the mouse button.
- » Move the point to the desired location and let the element "drop" by releasing the mouse button. Finished!

GPS

The abbreviation GPS stands for **G**lobal **P**ositioning **S**ystem.

Rerouting

Rerouting refers to the automatic recalculation of a route. A rerouting takes place if you leave the originally planned route e.g. due to road works.





12 Index

A

ActiveSync 75

Additional Maps 6

Address

selecting as destination 20

Addresses 71

synchronising with Outlook

72

Airbags 2

Alternative route 75

C

Contacts 73

Co-ordinates 73

D

Data sets 54

Day/night mode 33

Desktop 48

Main menu 48

Device 47

Drag-and-drop 75

Driver mode 2

E

Editing the list of stop-off points

26

Entering destinations 25, 34

Exit 50

F

Falk Navigator

installing 4

Favourites

selecting as destination 22

G

Geocoding

starting 73

GPS 75

Settings 44

GPS receiver 6

activating 8

Function 6

locating 8

Satellite 6

H

How to use 12

I

Information 47

Version 47

Installation 4

Itinerary for navigation 33

J

Junction view 30

L

List of stop-off points 35, 63

M

Map 30

creating 61

loading onto PDA 49, 52

Map name 61

Map sections 65

Map window 65

N

Navigation 25

Navigation screen 28

Nearby destination 24

New map 56

creating 49

**O**

Other functions 31

P

Passenger safety systems 2

Passenger(s) 2

PDA

Installation 5

opening the program 11

Settings 40

Personal Addresses 50, 69

Point

selecting as destination 19

Previous destinations

selecting as destination 23

Q

Quick introduction 8

R

Requirements 4

Rerouting 75

Route

calculating 68

Route Planner 34, 49, 62

Route Planning 34

Routing screen 37

S

Safety 2

Search for Next 38

Sections 57

Select destination 2, 16

Settings

GPS 44

Home address 45

Map 40

Map display 66

Navigation 41

PDA 40

Route Planning 43

Voice alert 42

Software

install 50

Speech 46

Start

Falk Navigator 9

Support 6

U

Unit of measurement 46

V

Voice alert 33





13 Licensing Agreement

Please read the following terms before opening the packaging of this software and data pack. By opening the sealed packaging, you signal acceptance of the Licensing Agreement set forth below. If you do not agree with these terms, please return the unopened pack and all other appertaining material without delay to the seller only. The purchase price will be reimbursed to you by said seller.

1. Subject matter of the Licensing Agreement

The subject matter of the Licensing Agreement is the purchased item contained in this software and data pack.

The software and data are protected by copyright. MAP&GUIDE GmbH holds all the legal powers necessary to grant the customer the rights identified under Section 2. Inasmuch as third-party data stocks are incorporated, MAP&GUIDE GmbH holds the appropriate rights of exploitation.

2. Scope of Utilisation Rights

MAP&GUIDE GmbH grants the Licensee (purchaser) a non-exclusive (simple) right to use the software and data for their intended purpose on a computer, this being without any time limitation but subject to the following rulings.

The data is to be used together with the software by one single user only on one single computer. The Licensee is permitted to install the software on a hard disk and to print results for his/her own purposes. He/she is also permitted to make a back-up copy which is to be marked as such. This copy is to be used for back-up only and will remain in the possession and under the lock and key of the Licensee. No other duplication is permitted.

The software and data are only permitted to be used in a network or multi-user system if the Licensee has obtained a special licence for this purpose, such a licence being for every monitor or every workstation from which the software and data can be used at any given time.

The Licensee is not permitted to translate, process, amend or arrange the software and data, or the results obtained from use of the same, with the aim of creating a product of his/her own. Software and data are not permitted to be made accessible, rented, disseminated or publicly reproduced as part of business activities. In particular, they are not to be made accessible on the internet, unless a written agreement to this effect has been made with MAP&GUIDE GmbH.

The Licensee has the right to assign the title to the software and data to third parties,



provided that he/she presents a written submission to MAP&GUIDE GmbH, stating that he/she is passing on the product and not retaining a copy of the data carrier or software and provided that the third party submits a written undertaking directly to MAP&GUIDE GmbH in which he/she enters into an obligation to observe these present rulings on use.

3. Term of the Licence

This Licensing Agreement takes effect on purchase of the software and data and on opening of the packaging. If no other ruling is made, this Agreement shall be effective on a long-term basis.

MAP&GUIDE GmbH can revoke authorisation to use the product for good cause. There may be deemed to be good cause, in particular, if the Licensee does not observe the restrictions on use defined in Section 2 or infringes the obligation to maintain confidentiality as under Section 4 and if he/she fails to discontinue such action immediately when given a written warning containing a threat to revoke the rights.

If authorisation to use the product is revoked, the Licensee shall surrender the original data carriers and any existing copies and shall delete the software and data from his/her computer. He/she must submit to MAP&GUIDE GmbH written confirmation of full surrender and deletion.

4. Confidentiality and Storage

The Licensee undertakes to store in a suitable manner both the contractual items and any copies made of the same and to secure these items in a way ensuring that no third parties have access to them or can learn of their content. The Licensee's employees are to be notified of the legal situation relating to the software and data.

5. Test Versions

Authorisation to use test versions is restricted to a period of 30 days after software installation. Test versions also have no more than a restricted operating time in technical terms. Contrary to Section 2 Para. 4, they are not to be passed on to third parties under any circumstances.

6. Licensing Fee

For the granting of the above-identified right of use of the software and data, the Licensee shall pay a non-recurring licensing fee which will be specified by the contracting parties in a separate agreement. This fee simultaneously covers licensing charges for the use of third-party software and data stocks under this Agreement.



7. Reservation of Ownership

The software and data package will remain the property of MAP&GUIDE GmbH until the licensing fee under Section 6 has been paid in full.

Pledging of the package or assignment of the same as security by the Licensee are not permitted before the licensing fee has been paid in full. In the event of attachment of the software and data package by third parties, the Licensee will give notification that the package is the property of MAP&GUIDE GmbH – insofar as the licensing fee has not been paid in full – and will inform MAP&GUIDE GmbH without delay.

If the Licensee fails to comply with the Agreement – in particular if he/she is in default on payment –, MAP&GUIDE GmbH has the right to repossess the software and data package or, if applicable, to require assignment of the Licensee's claim to recovery of possession from third parties, without such repossession by MAP&GUIDE GmbH representing rescission of the contract.

8. Guarantee

a) The Licensee shall give notice of obvious defects within a reasonable period of time and in writing by giving an exact description of the fault. If the Licensee is a commercial trader, he/she shall also examine the supplies and services of MAP&GUIDE GmbH without delay and give notice of defects discovered without delay according to sentence 1. It is the obligation of the Licensee to detect and list any faults. Delayed, insufficient or unfounded notifications of defects shall release MAP&GUIDE GmbH from its duties to perform. However, if MAP&GUIDE GmbH nevertheless takes action, the costs thereof shall be invoiced to the Licensee by MAP&GUIDE GmbH.

b) MAP&GUIDE GmbH guarantees that program functions can be executed without faults according to the program descriptions and contractual documents. There is consensus between the parties that software faults cannot be excluded due to the nature of technology, even if such software is created with due care.

In particular, MAP&GUIDE GmbH does not warrant that the program functions of the software and data meet the requirements of the Licensee.

c) MAP&GUIDE GmbH may also perform under a guarantee for received standard products by effecting subsequent improvement. Subsequent improvement is effected through the rectification of the fault, through the handing-over of a new program or data stock or by MAP&GUIDE GmbH showing ways to retrieve a new program or data stock even if this leads to an acceptable level of expenditure incurred due to an adaptation or a conversion.

d) The Licensee must give MAP&GUIDE GmbH sufficient opportunity and time to carry out any subsequent improvements and provide replacements appearing necessary to MAP&GUIDE GmbH; otherwise MAP&GUIDE GmbH shall be discharged from any liability for



the consequences resulting therefrom.

The Licensee shall support MAP&GUIDE GmbH in correcting faults (by providing descriptions of faults and test data, employee information, enabling access to the installation etc.). The Licensee shall take adequate measures, in particular by making data back-ups, if the software is not fully or only partially functioning.

Only in urgent cases if the operating safety is endangered and to prevent an excessively large amount of damage is the Licensee entitled to rectify the fault himself or have such rectified by third parties and to demand the reimbursement of the necessary expenditure by MAP&GUIDE GmbH; in such a case, the Licensee is also required to notify MAP&GUIDE GmbH without delay.

e) The Licensee is entitled to withdraw from the contract in accordance with statutory provisions if, taking into account the statutory exceptions, MAP&GUIDE GmbH allows a reasonable additional period of time to pass by in vain which is granted to it to effect a subsequent improvement or make a substitute delivery due to a material defect.

However, the Licensee only has a right to reduce the purchase price if a defect is no more than minor.

In other respects, the right to a reduction in price of the contract is excluded.

MAP&GUIDE GmbH shall not accept any guarantee in particular for

- faulty, improper installation, use and handling by the Licensee
- improper maintenance
- natural wear and tear.

f) MAP&GUIDE GmbH shall support the Licensee during fault diagnosis and rectification even if it is not certain that a fault is due to the supplies and services of MAP&GUIDE GmbH. If it is established that the supplies and services of MAP&GUIDE GmbH are not faulty, MAP&GUIDE GmbH shall bill the expenses incurred to the Licensee.

g) Should the Licensee or a third party carry out a subsequent improvement improperly, MAP&GUIDE GmbH shall not be liable for any consequences resulting therefrom.

Guarantee claims shall also expire if the subject matter is altered and the Licensee fails to furnish proof that the fault has occurred irrespective thereof.

Moreover, MAP&GUIDE GmbH shall not accept a guarantee for as long as the Licensee uses the subject matter contrary to the restrictions on use and § 3 GTC.

9. Liability

a) If it is not possible for the customer to use the subject matter in the manner stipulated in the contract and if MAP&GUIDE GmbH is at fault for this, the claims under section 9 apply accordingly to the exclusion of further claims of the Licensee.



b) For damage which has not occurred to the subject matter itself, MAP&GUIDE GmbH shall be liable, irrespective of the legal grounds, only in case of

- wilful intent
- the gross negligence of the managing director or of executive employees
- death, injury or an impairment to health caused by the subject matter
- defects which were fraudulently concealed or the absence of which was guaranteed
- defects in the subject matter insofar as MAP&GUIDE GmbH is liable for personal injury and damage to property of privately used objects under the Product Liability Act.

c) In the event of a culpable breach of essential obligations under the contract MAP&GUIDE GmbH shall be liable also for the gross

negligence of non-executive employees and for slight negligence, in the latter case restricted to damage typical for the

contract which was reasonably foreseeable.

d) Further claims are excluded.

e) MAP&GUIDE GmbH may plead that the Licensee is jointly responsible for the damage.

f) Insofar as insurance cover exists, MAP&GUIDE GmbH shall place the insurance payment in full at the Licensee's disposal irrespective of the limitation of liability agreed.

10. Statute of limitations

All of the Licensee's claims, irrespective of the legal grounds, shall become statute-barred after 12 months; if the subject matter concerns new items of moveable property and the Licensee is a consumer, all claims shall become statute-barred after 24 months.

Statutory provisions apply to intentional or fraudulent conduct as well as to claims under the Product Liability Act.

The start of the statute of limitations is based on statutory provisions.

11. Final Clauses

The Licensing Agreement made here shall be governed by the law of the Federal Republic of Germany with exclusion of UNCITRAL commercial law. The place of fulfilment of all obligations resulting from this Agreement is Karlsruhe. In relation to all disputes resulting from this Licensing Agreement, the contracting partners agree Karlsruhe to be the place of jurisdiction if the Licensee is a commercial trader entered in the commercial register or the equivalent.

In case of doubt, the original German version of the Agreement shall always prevail.

Status: 02.10.03



Other Copyrights

Please note the following regional limitations:

France	"Source: Géoroute® IGN & BD Carto® IGN France"
Germany	"Die Grundlagendaten wurden mit Genehmigung der zuständigen Behörden entnommen"
Great Britain	"Based on Ordnance Survey electronic data and used with permission of the Controller of Her Majesty's Stationary Office © Crown Copyright, 1995"
Italy	"La Banca Dati Italiane è stata prodotta usando quale riferimento anche cartografia numerica ed al tratto prodotta e fornita dalla Regione Toscana."
Norway	Copyright © 2000; Norwegian Mapping Agency"
Portugal	"Source: IgeoE - Portugal"
Spain	"Información geográfica propiedad del CNIG"
Sweden	"Based upon electronic data © National Land Survey Sweden."
Switzerland	"Topografische Grundlage: © Bundesamt für Landestopographie."



14 Appendix

GPS receiver

Technical Specifications

Ports



Serial port:	Universal port (PS/2)
Baud rate:	4800 baud
Input signals:	Sirf II chipset
Output signals:	NMEA V.2.2, GGA, GSA, GSV, RMC
Antenna:	passively integrated

Measurements and environmental variables

Measurements:	66mm x 51mm x 22.5mm
Weight:	100g
Length of cables:	PDA to PS/2 connector: ca. 15 cm
	Adapter (PS/2) for cigarette lighter: ca. 100 cm
	GPS Mouse to PS/2 connector: 200cm
Casing:	Waterproof cases
Environmental temperature:	-40°C to +80°C



Safe temperature for storage:	-45°C to 100°C
Relative humidity:	5% to 95%, non-condensing
Maximum altitude:	18 km

Performance specifications

General:	12 channel signal acquisition
	L1 frequency 1575.42 MHz C/A Code
Acquisition time:	Cold boot: 48 s
	Warm boot: 38 s
	Host boot: 8 s
	Snap start: 3 s
Accuracy:	ca. 5m, with DGPS ca. 1 m
Dynamic characteristics:	Speed: 515m/s
	Acceleration: max. 4 g
	Altitude: max. 18 km

LED status table

Status	GPS
ON	GPS mouse receiving power and searching for satellites
OFF	GPS mouse not receiving power
BLINKING	GPS signal is being detected (connection)